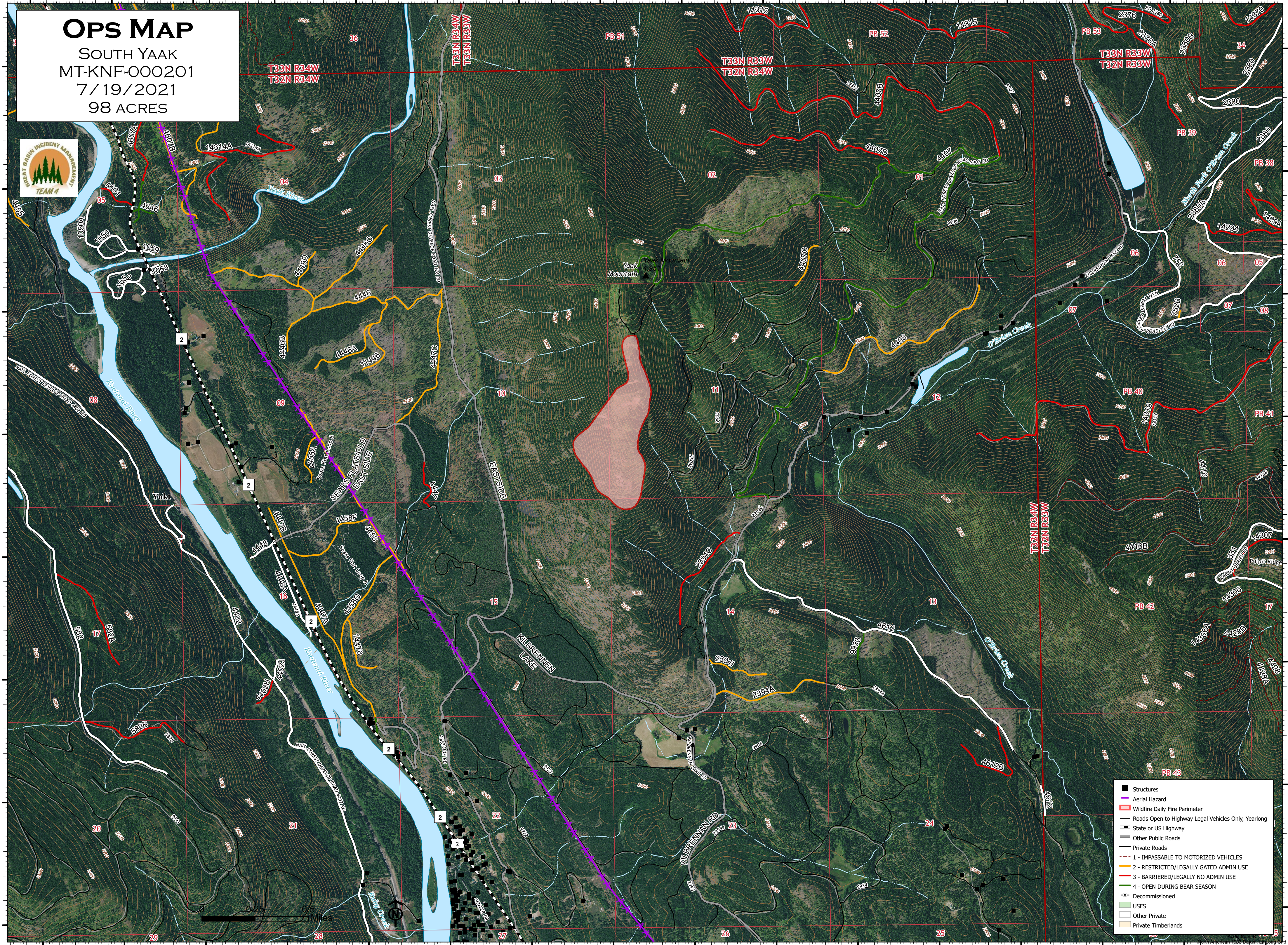


115°59'W 115°58'W 115°57'W 115°56'W 115°55'W 115°54'W 115°53'W 115°52'W

OPS MAP

SOUTH YAAK
MT-KNF-000201
7/19/2021
98 ACRES



115°59'W 115°58'W 115°57'W 115°56'W 115°55'W 115°54'W 115°53'W 115°52'W

- Structures
- Aerial Hazard
- Wildfire Daily Fire Perimeter
- Roads Open to Highway Legal Vehicles Only, Yearlong
- State or US Highway
- Other Public Roads
- Private Roads
- 1 - IMPASSABLE TO MOTORIZED VEHICLES
- 2 - RESTRICTED/LEGALLY GATED ADMIN USE
- 3 - BARRIERED/LEGALLY NO ADMIN USE
- 4 - OPEN DURING BEAR SEASON
- X- Decommissioned
- USFS
- Other Private
- Private Timberlands



48°34'N

48°33'N

48°32'N

48°31'N

48°34'N

48°33'N

48°32'N

48°31'N