

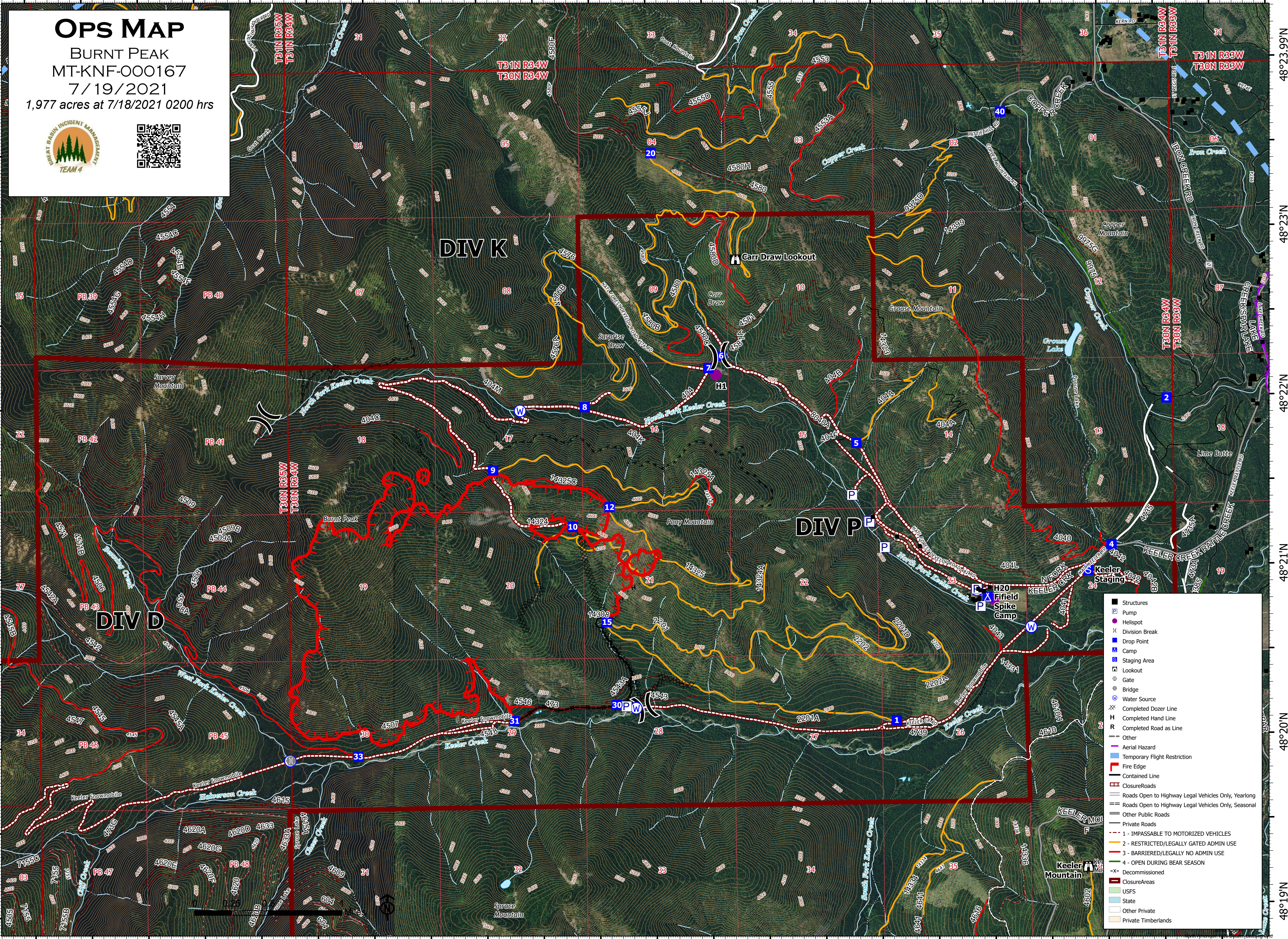
116°3'W 116°2'W 116°1'W 116°W 115°59'W 115°58'W 115°57'W 115°56'W 115°55'W 115°54'W 115°53'W 115°52'W

OPS MAP

BURNT PEAK
MT-KNF-000167

7/19/2021

1,977 acres at 7/18/2021 0200 hrs



- Structures
- Pump
- Helispot
- Division Break
- Drop Point
- Camp
- Staging Area
- Lookout
- Gate
- Bridge
- Water Source
- Completed Dozer Line
- Completed Hand Line
- Completed Road as Line
- Other
- Aerial Hazard
- Temporary Flight Restriction
- Fire Edge
- Contained Line
- ClosureRoads
- Roads Open to Highway Legal Vehicles Only, Yearlong
- Roads Open to Highway Legal Vehicles Only, Seasonal
- Other Public Roads
- Private Roads
- 1 - IMPASSABLE TO MOTORIZED VEHICLES
- 2 - RESTRICTED/LEGALLY GATED ADMIN USE
- 3 - BARRIERED/LEGALLY NO ADMIN USE
- 4 - OPEN DURING BEAR SEASON
- Decommissioned
- ClosureAreas
- USFS
- State
- Other Private
- Private Timberlands

116°3'W 116°2'W 116°1'W 116°W 115°59'W 115°58'W 115°57'W 115°56'W 115°55'W 115°54'W 115°53'W 115°52'W

48°23.99'N
48°23'N
48°22'N
48°21'N
48°20'N
48°19'N

48°23.99'N
48°23'N
48°22'N
48°21'N
48°20'N
48°19'N