

116°1'W 116°W 115°59'W 115°58'W 115°57'W 115°56'W 115°55'W 115°54'W 115°53'W 115°52'W 115°51.01'W

OPS MAP

SOUTH YAAK
MTKNF-000201

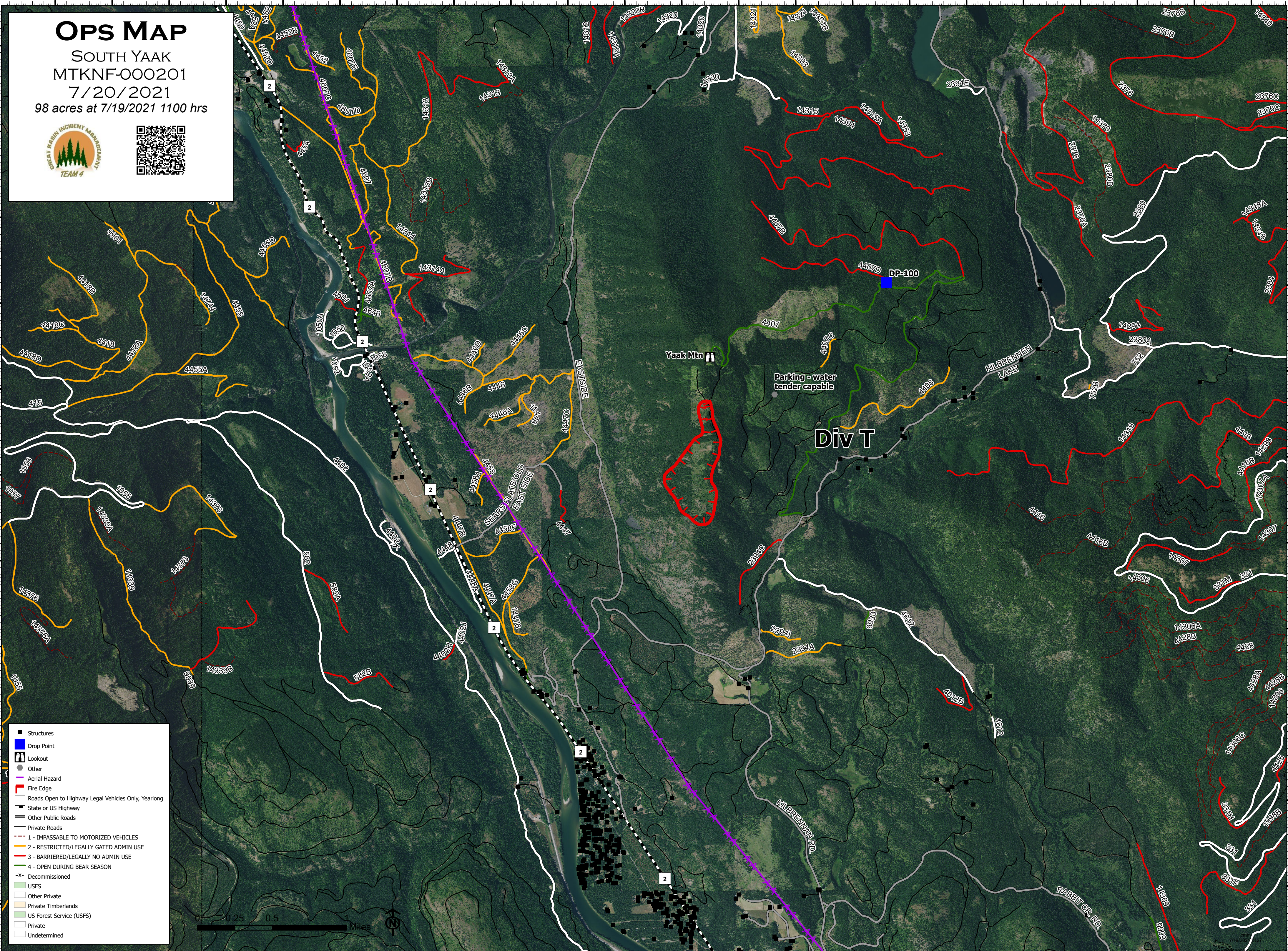
7/20/2021

98 acres at 7/19/2021 1100 hrs

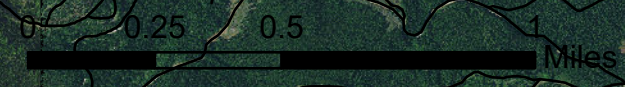


48°35'N
48°34'N
48°33'N
48°32'N
48°31'N

48°35'N
48°34'N
48°33'N
48°32'N
48°31'N



- Structures
- Drop Point
- 🏠 Lookout
- Other
- Aerial Hazard
- Fire Edge
- Roads Open to Highway Legal Vehicles Only, Yearlong
- State or US Highway
- Other Public Roads
- Private Roads
- 1 - IMPASSABLE TO MOTORIZED VEHICLES
- 2 - RESTRICTED/LEGALLY GATED ADMIN USE
- 3 - BARRIERED/LEGALLY NO ADMIN USE
- 4 - OPEN DURING BEAR SEASON
- x- Decommissioned
- USFS
- Other Private
- Private Timberlands
- US Forest Service (USFS)
- Private
- Undetermined



116°1'W 116°W 115°59'W 115°58'W 115°57'W 115°56'W 115°55'W 115°54'W 115°53'W 115°52'W 115°51.01'W