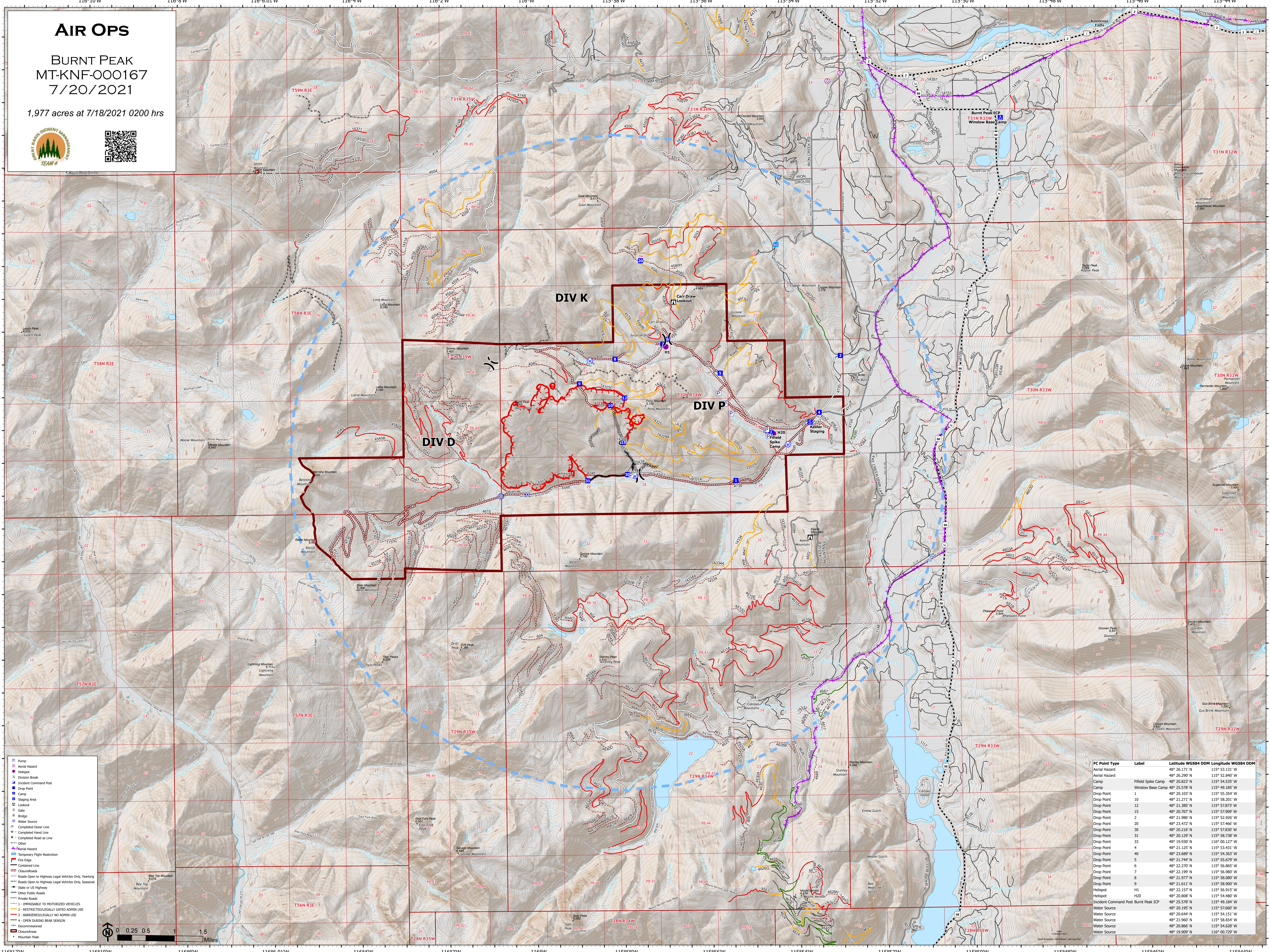


AIR OPS

BURNT PEAK
MT-KNF-000167
7/20/2021

1,977 acres at 7/18/2021 0200 hrs



FC Point Type	Label	Latitude WGS84 DDM	Longitude WGS84 DDM
Aerial Hazard		48° 26.171' N	115° 53.131' W
Aerial Hazard		48° 26.290' N	115° 52.840' W
Camp	Field Spike Camp	48° 20.823' N	115° 54.538' W
Camp	Winslow Base Camp	48° 25.878' N	115° 49.185' W
Drop Point	1	48° 20.103' N	115° 55.354' W
Drop Point	10	48° 21.271' N	115° 58.201' W
Drop Point	12	48° 21.385' N	115° 57.873' W
Drop Point	15	48° 20.707' N	115° 57.909' W
Drop Point	2	48° 21.986' N	115° 52.926' W
Drop Point	20	48° 23.472' N	115° 57.466' W
Drop Point	30	48° 20.216' N	115° 57.830' W
Drop Point	31	48° 20.129' N	115° 58.738' W
Drop Point	33	48° 19.930' N	116° 00.127' W
Drop Point	4	48° 21.125' N	115° 53.431' W
Drop Point	49	48° 23.689' N	115° 54.363' W
Drop Point	5	48° 21.744' N	115° 55.679' W
Drop Point	6	48° 22.270' N	115° 56.865' W
Drop Point	7	48° 22.199' N	115° 56.980' W
Drop Point	8	48° 21.977' N	115° 58.080' W
Drop Point	9	48° 21.611' N	115° 58.900' W
Helispot	H1	48° 23.157' N	115° 54.015' W
Helispot	H20	48° 20.808' N	115° 54.480' W
Incident Command Post	Burnt Peak ICP	48° 25.578' N	115° 49.184' W
Water Source		48° 20.195' N	115° 57.660' W
Water Source		48° 20.644' N	115° 54.151' W
Water Source		48° 21.960' N	115° 58.654' W
Water Source		48° 20.866' N	115° 54.628' W
Water Source		48° 19.909' N	116° 00.729' W