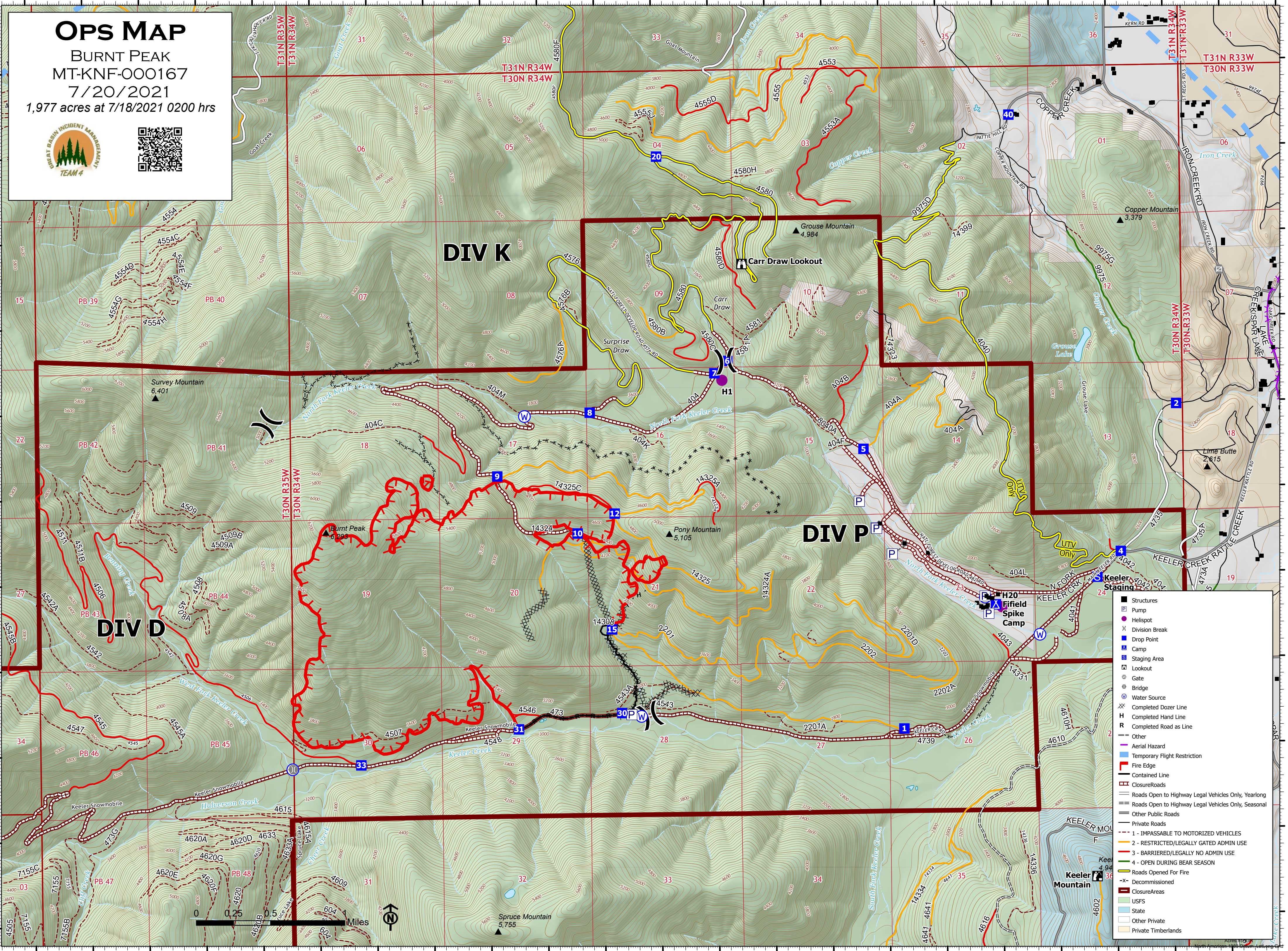


116°3'W 116°2'W 116°1'W 116°W 115°59'W 115°58'W 115°57'W 115°56'W 115°55'W 115°54'W 115°53'W 115°52'W

48°23.99'N 48°23'N 48°22'N 48°21'N 48°20'N 48°19'N

OPS MAP
 BURNT PEAK
 MT-KNF-000167
 7/20/2021
 1,977 acres at 7/18/2021 0200 hrs





- Structures
- ⊡ Pump
- Helipad
- ⌘ Division Break
- ⬇ Drop Point
- ⊠ Camp
- ⊞ Staging Area
- ⊞ Lookout
- ⊞ Gate
- ⊞ Bridge
- ⊞ Water Source
- ⊞ Completed Dozer Line
- ⊞ Completed Hand Line
- ⊞ Completed Road as Line
- ⊞ Other
- ⊞ Aerial Hazard
- ⊞ Temporary Flight Restriction
- ⊞ Fire Edge
- ⊞ Contained Line
- ⊞ Closure/Roads
- ⊞ Roads Open to Highway Legal Vehicles Only, Yearlong
- ⊞ Roads Open to Highway Legal Vehicles Only, Seasonal
- ⊞ Other Public Roads
- ⊞ Private Roads
- ⊞ 1 - IMPASSABLE TO MOTORIZED VEHICLES
- ⊞ 2 - RESTRICTED/LEGALLY GATED ADMIN USE
- ⊞ 3 - BARRIERED/LEGALLY NO ADMIN USE
- ⊞ 4 - OPEN DURING BEAR SEASON
- ⊞ Roads Opened For Fire
- ⊞ Decommissioned
- ⊞ Closure Areas
- ⊞ USFS
- ⊞ State
- ⊞ Other Private
- ⊞ Private Timberlands



116°3'W 116°2'W 116°1'W 116°W 115°59'W 115°58'W 115°57'W 115°56'W 115°55'W 115°54'W 115°53'W 115°52'W