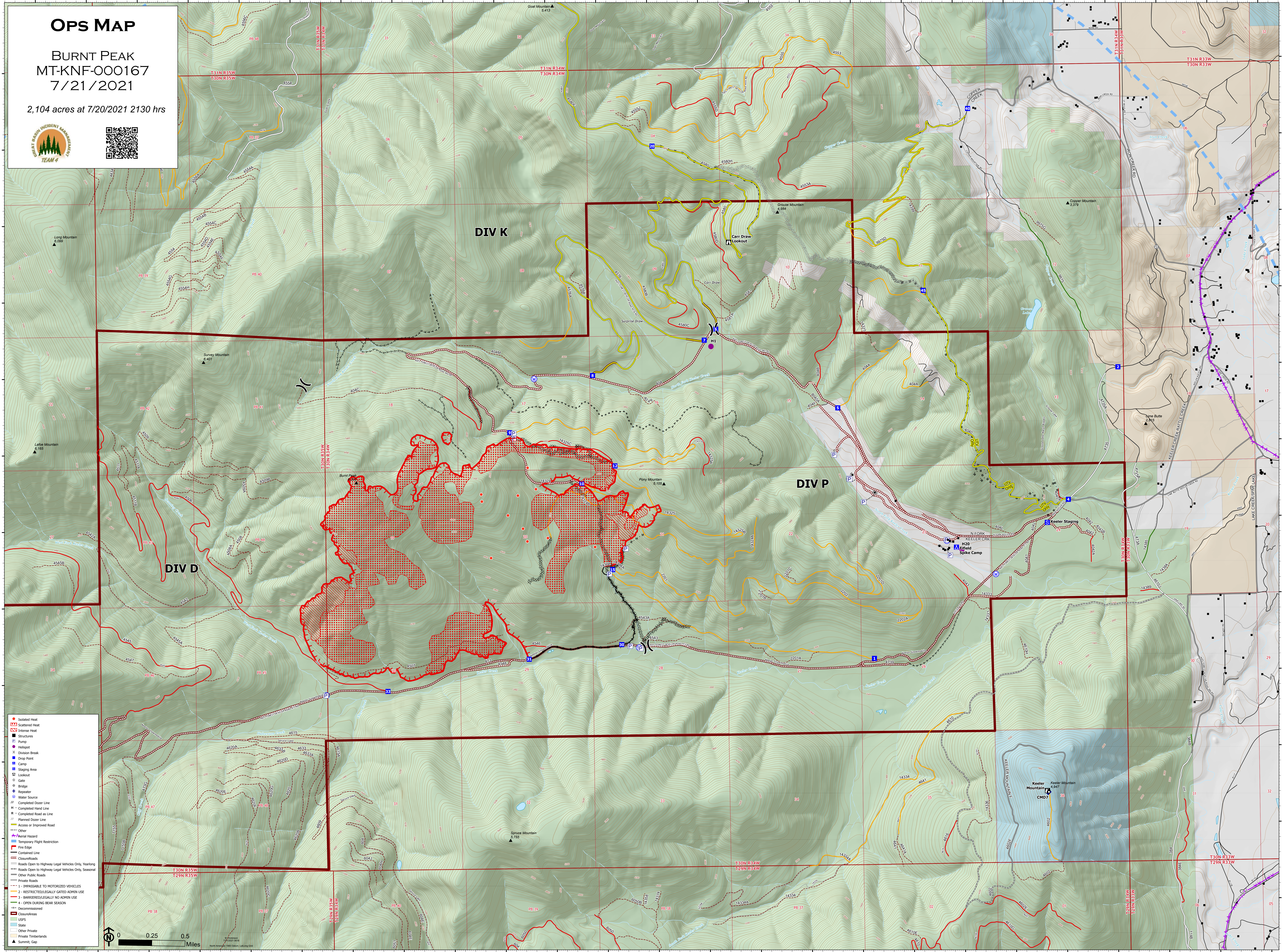


# OPS MAP

BURNT PEAK  
MT-KNF-000167  
7/21/2021

2,104 acres at 7/20/2021 2130 hrs



- Isolated Heat
- Scattered Heat
- Intense Heat
- Structures
- Pump
- Helibase
- Division Break
- Drop Point
- Camp
- Staging Area
- Lookout
- Gate
- Bridge
- Repeater
- Water Source
- Completed Dozer Line
- Completed Hand Line
- Completed Road on Line
- Planned Dozer Line
- Access or Improved Road
- Other
- Material Hazard
- Temporary Flight Restriction
- Fire Edge
- Contained Line
- Closure/Roads
- Roads Open to Highway Legal Vehicles Only, Yearlong
- Roads Open to Highway Legal Vehicles Only, Seasonal
- Other Public Roads
- Private Roads
- 1 - UNPASSABLE TO MOTORIZED VEHICLES
- 2 - RESTRICTED/LEGALLY GATED ADMIN USE
- 3 - BARRIER/LEGALLY NO ADMIN USE
- 4 - OPEN DURING BEAR SEASON
- Decommissioned
- Closure/Areas
- USFS
- State
- Other Private
- Private Timberlands
- Summit Gap

