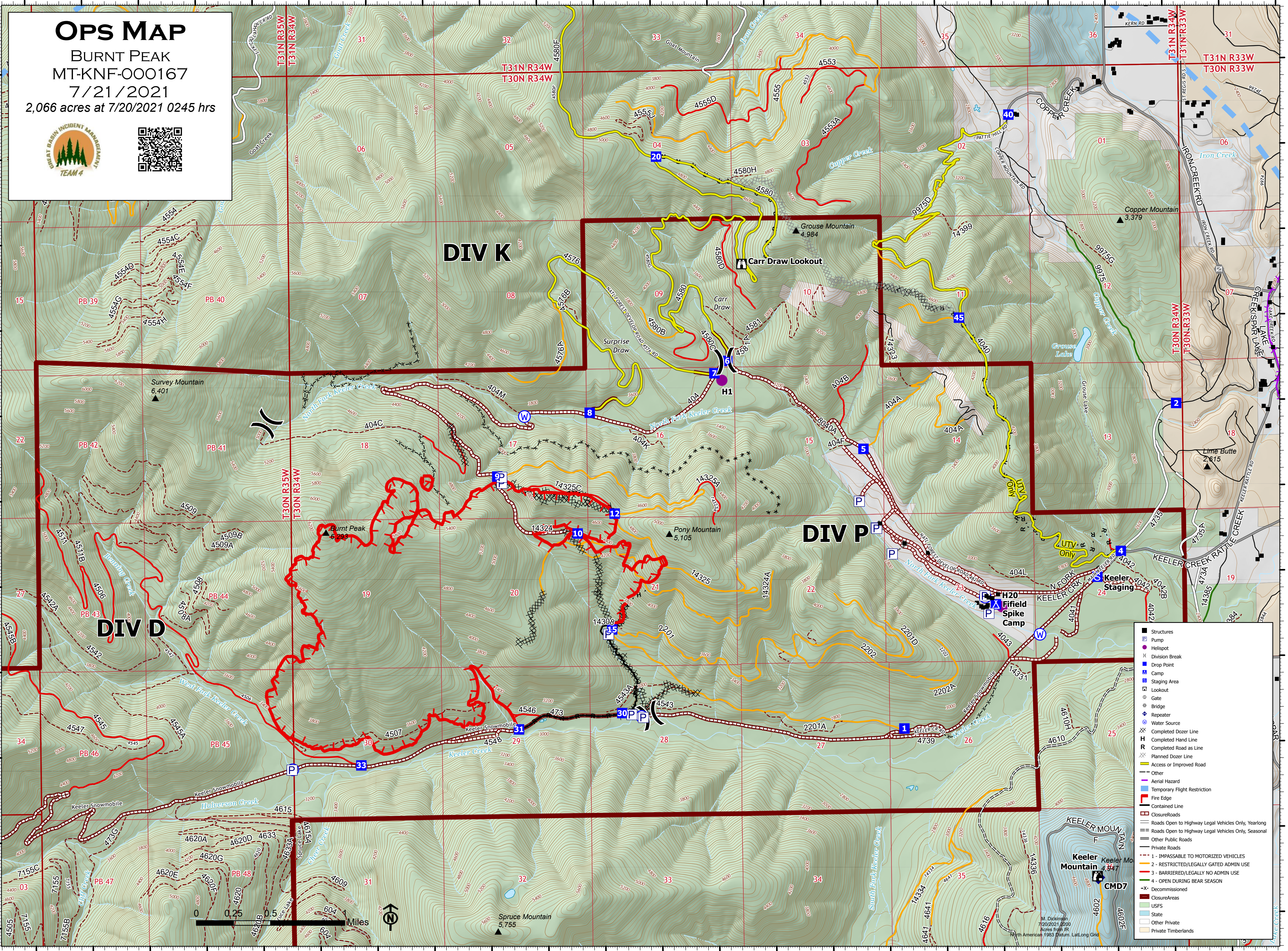


116°3'W 116°2'W 116°1'W 116°W 115°59'W 115°58'W 115°57'W 115°56'W 115°55'W 115°54'W 115°53'W 115°52'W

48°23.99'N 48°23'N 48°22'N 48°21'N 48°20'N 48°19'N

**OPS MAP**  
 BURNT PEAK  
 MT-KNF-000167  
 7/21/2021  
 2,066 acres at 7/20/2021 0245 hrs





- Structures
- ⊞ Pump
- Helispot
- ⌘ Division Break
- ⊞ Drop Point
- ⊞ Camp
- ⊞ Staging Area
- ⊞ Lookout
- ⊞ Gate
- ⊞ Bridge
- ⊞ Repeater
- ⊞ Water Source
- ⊞ Completed Dozer Line
- H Completed Hand Line
- R Completed Road as Line
- ⊞ Planned Dozer Line
- Access or Improved Road
- Other
- Aerial Hazard
- Temporary Flight Restriction
- Fire Edge
- Contained Line
- Closure/Roads
- Roads Open to Highway Legal Vehicles Only, Yearlong
- Roads Open to Highway Legal Vehicles Only, Seasonal
- Other Public Roads
- Private Roads
- 1 - IMPASSABLE TO MOTORIZED VEHICLES
- 2 - RESTRICTED/LEGALLY GATED ADMIN USE
- 3 - BARRIERED/LEGALLY NO ADMIN USE
- 4 - OPEN DURING BEAR SEASON
- X Decommissioned
- Closure Areas
- USFS
- State
- Other Private
- Private Timberlands

M. Dickinson  
 7/20/2021 0200  
 Acres from IR  
 North American 1983 Datum, Lat/Long Grid