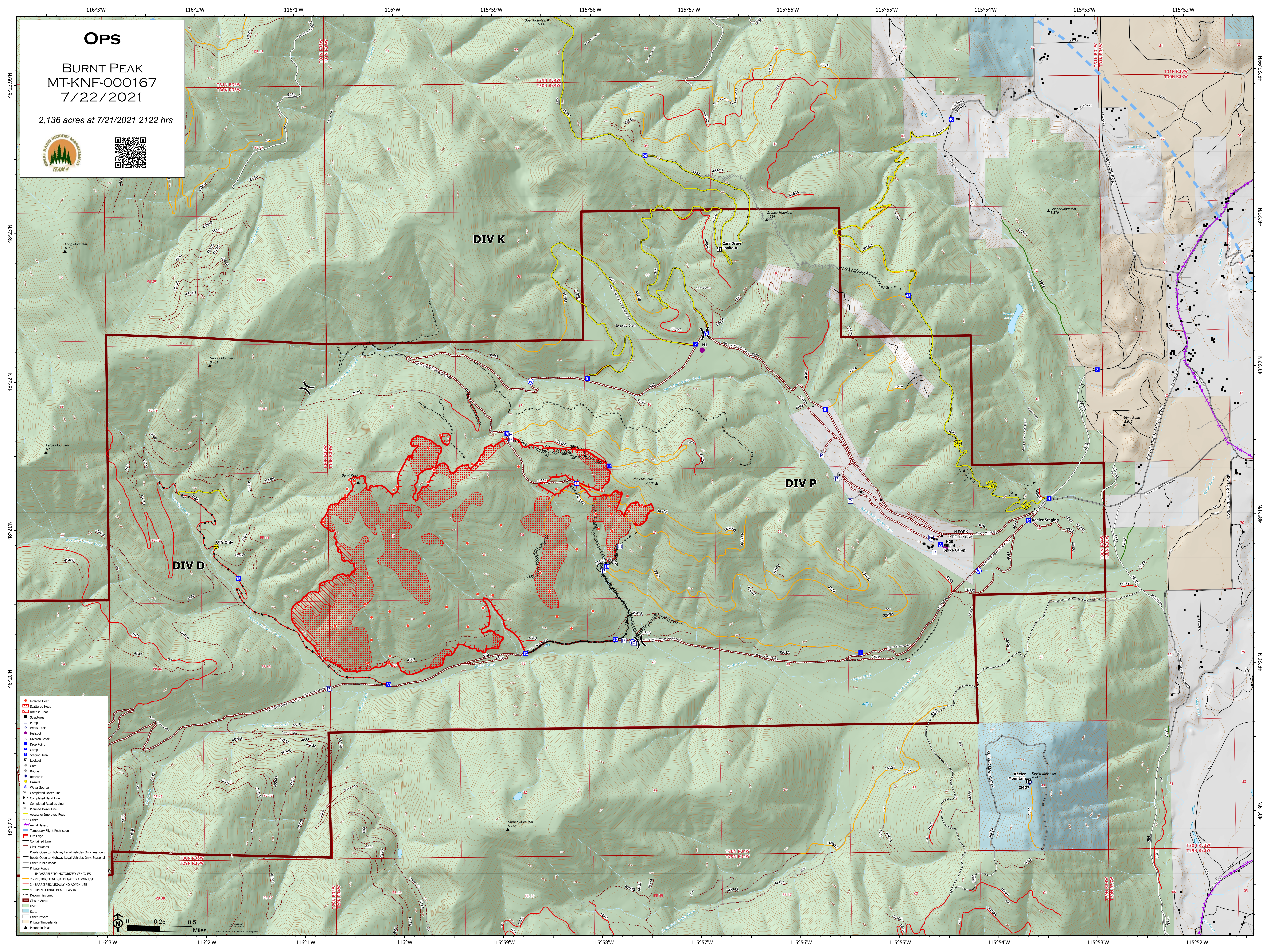


# OPS

BURNT PEAK  
MT-KNF-000167  
7/22/2021

2,136 acres at 7/21/2021 2122 hrs



- Isolated Heat
- Scattered Heat
- Intense Heat
- Structures
- Pump
- Water Tank
- Helispot
- Division Break
- Drop Point
- Camp
- Staging Area
- Lookout
- Gate
- Bridge
- Repeater
- Hazard
- Water Source
- Completed Dozer Line
- Completed Hand Line
- Completed Road on Line
- Planned Dozer Line
- Access or Improved Road
- Other
- Material Hazard
- Temporary Flight Restriction
- Fire Edge
- Contained Line
- Closure/Roads
- Roads Open to Highway Legal Vehicles Only, Yearlong
- Roads Open to Highway Legal Vehicles Only, Seasonal
- Other Public Roads
- Private Roads
- 1 - UNPASCABLE TO MOTORIZED VEHICLES
- 2 - RESTRICTED/LEGALLY GATED ADMIN USE
- 3 - BARRIRED/LEGALLY NO ADMIN USE
- 4 - OPEN DURING BEAR SEASON
- Decommissioned
- Closure/Areas
- USFS
- State
- Other Private
- Private Timberlands
- Mountain Peak