

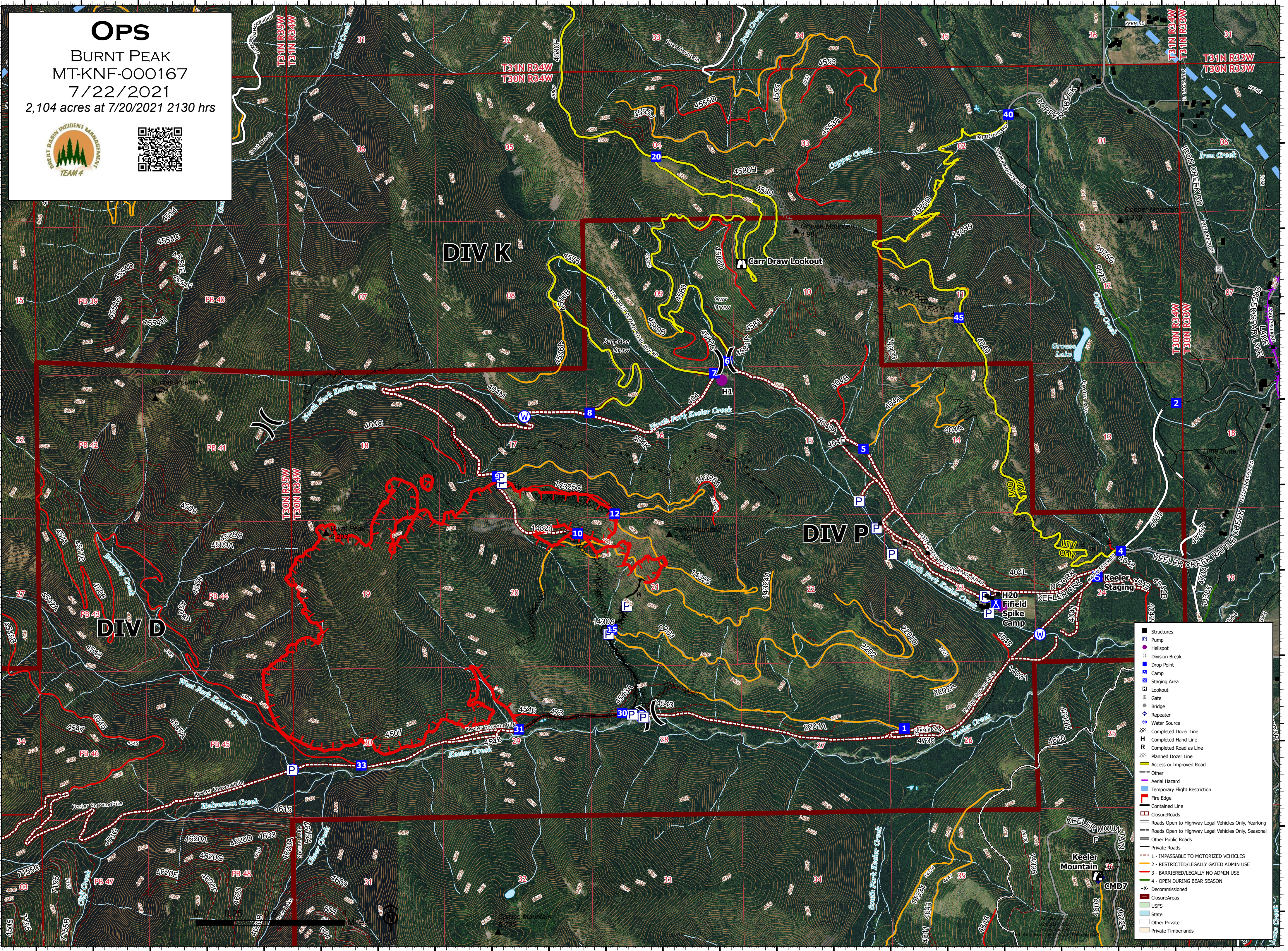
116°3'W 116°2'W 116°1'W 116°W 115°59'W 115°58'W 115°57'W 115°56'W 115°55'W 115°54'W 115°53'W 115°52'W

48°23.99'N
48°23'N
48°22'N
48°21'N
48°20'N
48°19'N

48°23.99'N
48°23'N
48°22'N
48°21'N
48°20'N
48°19'N

OPS
 BURNT PEAK
 MT-KNF-000167
 7/22/2021
 2,104 acres at 7/20/2021 2130 hrs





- Structures
- ⊠ Pump
- Helispot
- ⊠ Division Break
- ⊠ Drop Point
- ⊠ Camp
- ⊠ Staging Area
- ⊠ Lookout
- ⊠ Gate
- ⊠ Bridge
- ⊠ Repeater
- ⊠ Water Source
- ⊠ Completed Dozer Line
- ⊠ Completed Hand Line
- ⊠ Completed Road as Line
- ⊠ Planned Dozer Line
- Access or Improved Road
- Other
- Aerial Hazard
- Temporary Flight Restriction
- Fire Edge
- Contained Line
- Closure/Roads
- Roads Open to Highway Legal Vehicles Only, Yearlong
- Roads Open to Highway Legal Vehicles Only, Seasonal
- Other Public Roads
- Private Roads
- 1 - IMPASSABLE TO MOTORIZED VEHICLES
- 2 - RESTRICTED/LEGALLY GATED ADMIN USE
- 3 - BARRIERED/LEGALLY NO ADMIN USE
- 4 - OPEN DURING BEAR SEASON
- X- Decommissioned
- Closure Areas
- USFS
- State
- Other Private
- Private Timberlands

116°3'W 116°2'W 116°1'W 116°W 115°59'W 115°58'W 115°57'W 115°56'W 115°55'W 115°54'W 115°53'W 115°52'W