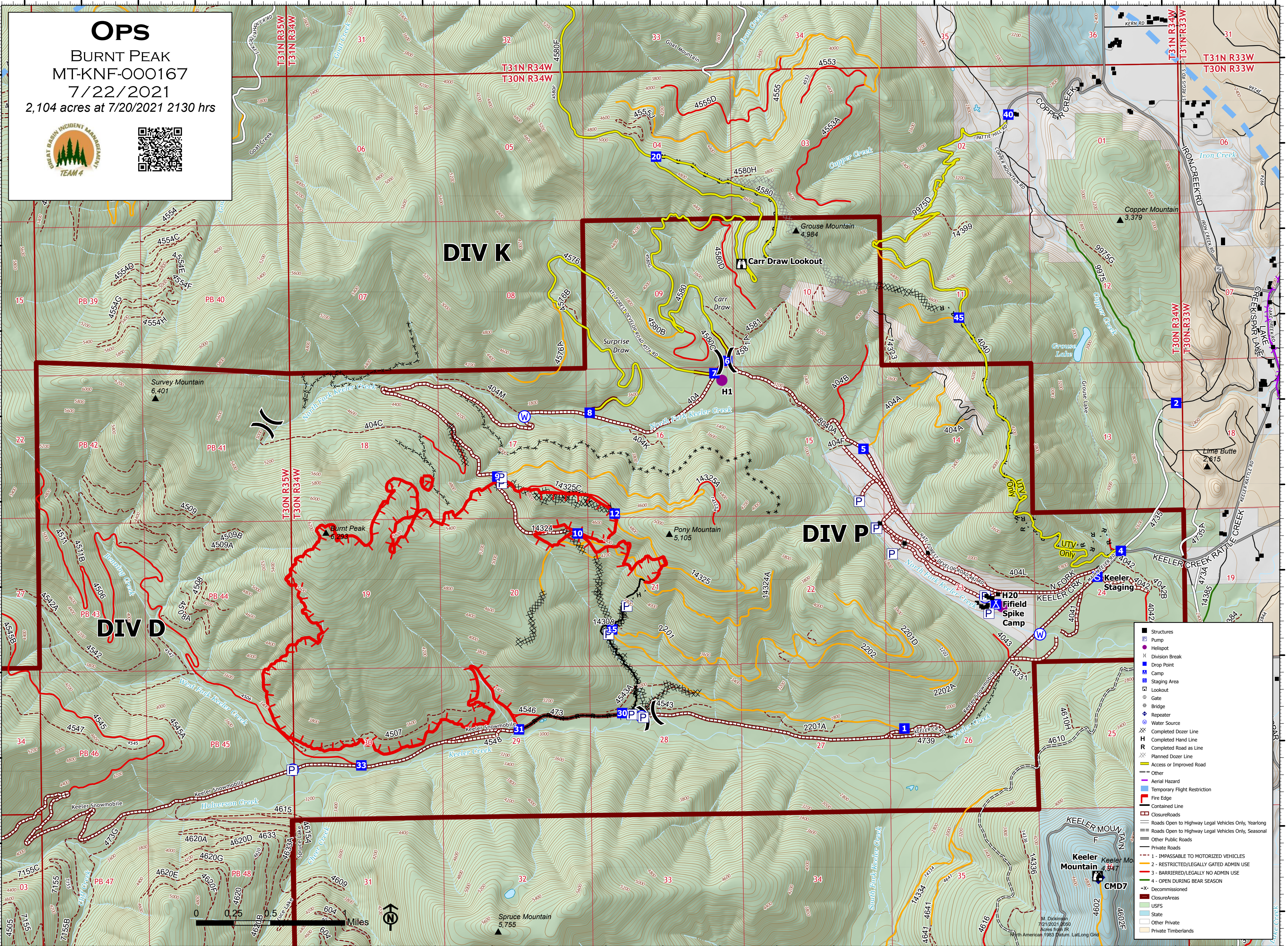


116°3'W 116°2'W 116°1'W 116°W 115°59'W 115°58'W 115°57'W 115°56'W 115°55'W 115°54'W 115°53'W 115°52'W



OPS
 BURNT PEAK
 MT-KNF-000167
 7/22/2021
 2,104 acres at 7/20/2021 2130 hrs




DIV K

DIV P

DIV D

- Structures
- ⊞ Pump
- Helispot
- ⊞ Division Break
- ⊞ Drop Point
- ⊞ Camp
- ⊞ Staging Area
- ⊞ Lookout
- ⊞ Gate
- ⊞ Bridge
- ⊞ Repeater
- ⊞ Water Source
- ⊞ Completed Dozer Line
- ⊞ Completed Hand Line
- ⊞ Completed Road as Line
- ⊞ Planned Dozer Line
- ⊞ Access or Improved Road
- ⊞ Other
- ⊞ Aerial Hazard
- ⊞ Temporary Flight Restriction
- ⊞ Fire Edge
- ⊞ Contained Line
- ⊞ Closure/Roads
- ⊞ Roads Open to Highway Legal Vehicles Only, Yearlong
- ⊞ Roads Open to Highway Legal Vehicles Only, Seasonal
- ⊞ Other Public Roads
- ⊞ Private Roads
- ⊞ 1 - IMPASSABLE TO MOTORIZED VEHICLES
- ⊞ 2 - RESTRICTED/LEGALLY GATED ADMIN USE
- ⊞ 3 - BARRIERED/LEGALLY NO ADMIN USE
- ⊞ 4 - OPEN DURING BEAR SEASON
- ⊞ Decommissioned
- ⊞ Closure Areas
- ⊞ USFS
- ⊞ State
- ⊞ Other Private
- ⊞ Private Timberlands



116°3'W 116°2'W 116°1'W 116°W 115°59'W 115°58'W 115°57'W 115°56'W 115°55'W 115°54'W 115°53'W 115°52'W

48°23.99'N
48°23'N
48°22'N
48°21'N
48°20'N
48°19'N

48°23.99'N
48°23'N
48°22'N
48°21'N
48°20'N
48°19'N

M. Dickinson
7/21/2021 0850
Acres from IR
North American 1983 Datum, Lat/Long Grid