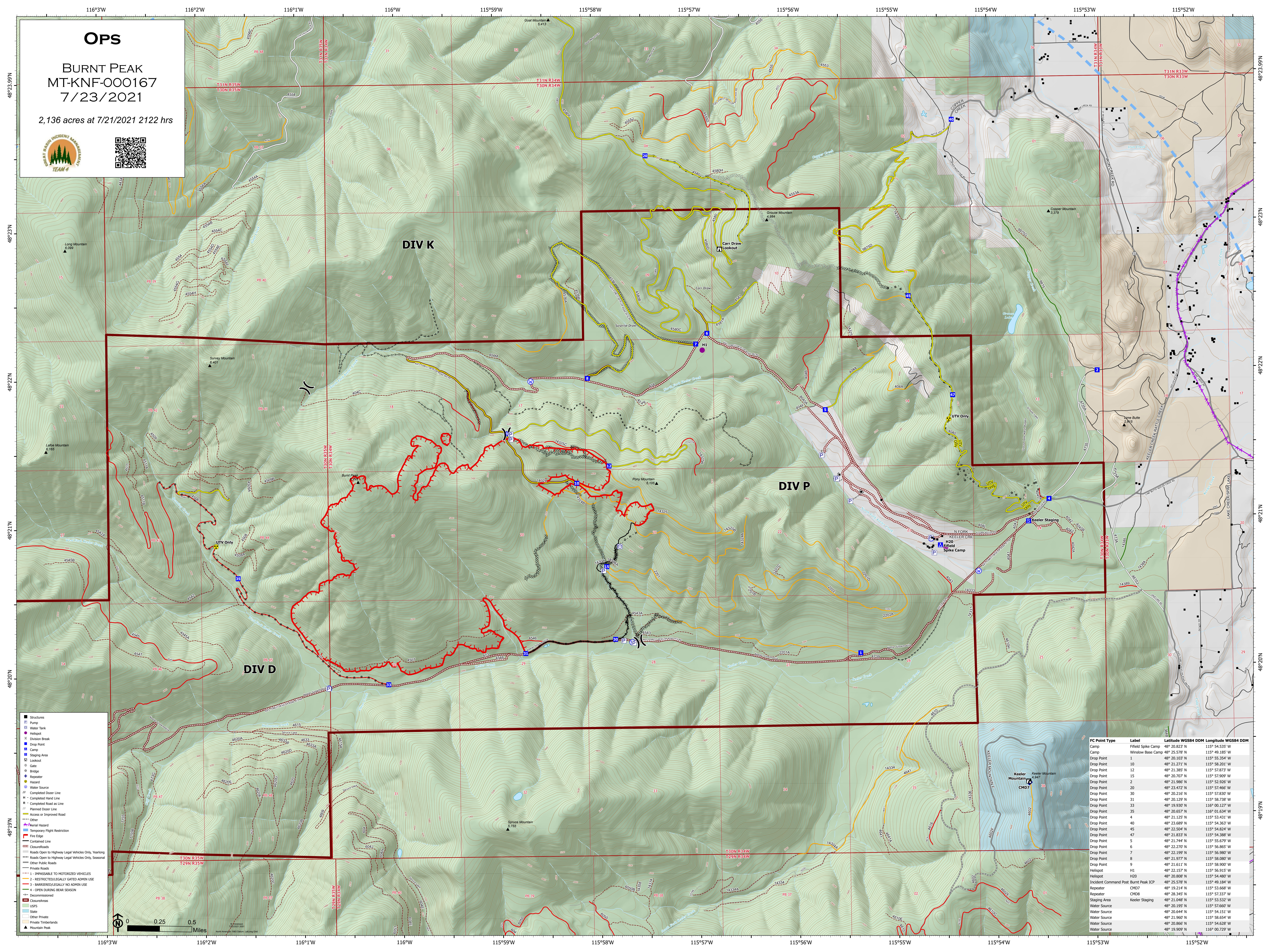


OPS

BURNT PEAK
MT-KNF-000167
7/23/2021

2,136 acres at 7/21/2021 2122 hrs



FC Point Type	Label	Latitude WGS84 DDM	Longitude WGS84 DDM
Camp	Field Spike Camp	48° 20.822' N	115° 54.335' W
Camp	Window Base Camp	48° 25.576' N	115° 49.185' W
Drop Point	1	48° 20.103' N	115° 55.354' W
Drop Point	10	48° 21.271' N	115° 58.201' W
Drop Point	12	48° 21.385' N	115° 57.873' W
Drop Point	15	48° 20.707' N	115° 57.909' W
Drop Point	2	48° 21.986' N	115° 53.031' W
Drop Point	20	48° 23.472' N	115° 57.466' W
Drop Point	30	48° 20.216' N	115° 57.830' W
Drop Point	31	48° 20.129' N	115° 58.738' W
Drop Point	33	48° 19.930' N	116° 00.127' W
Drop Point	35	48° 20.657' N	116° 01.634' W
Drop Point	4	48° 21.125' N	115° 53.031' W
Drop Point	40	48° 23.689' N	115° 54.363' W
Drop Point	45	48° 22.504' N	115° 54.824' W
Drop Point	47	48° 21.833' N	115° 54.388' W
Drop Point	5	48° 21.744' N	115° 55.679' W
Drop Point	6	48° 22.270' N	115° 56.865' W
Drop Point	7	48° 22.189' N	115° 56.865' W
Drop Point	8	48° 21.977' N	115° 58.080' W
Drop Point	9	48° 21.611' N	115° 58.900' W
Drop Point	11	48° 22.157' N	115° 56.915' W
Drop Point	13	48° 20.808' N	115° 54.480' W
Drop Point	14	48° 25.576' N	115° 49.184' W
Drop Point	16	48° 19.214' N	115° 53.668' W
Drop Point	17	48° 28.345' N	115° 57.337' W
Drop Point	18	48° 21.048' N	115° 53.532' W
Drop Point	19	48° 20.195' N	115° 57.660' W
Drop Point	21	48° 20.644' N	115° 54.151' W
Drop Point	22	48° 21.960' N	115° 58.654' W
Drop Point	23	48° 20.866' N	115° 54.036' W
Drop Point	24	48° 19.909' N	116° 00.729' W