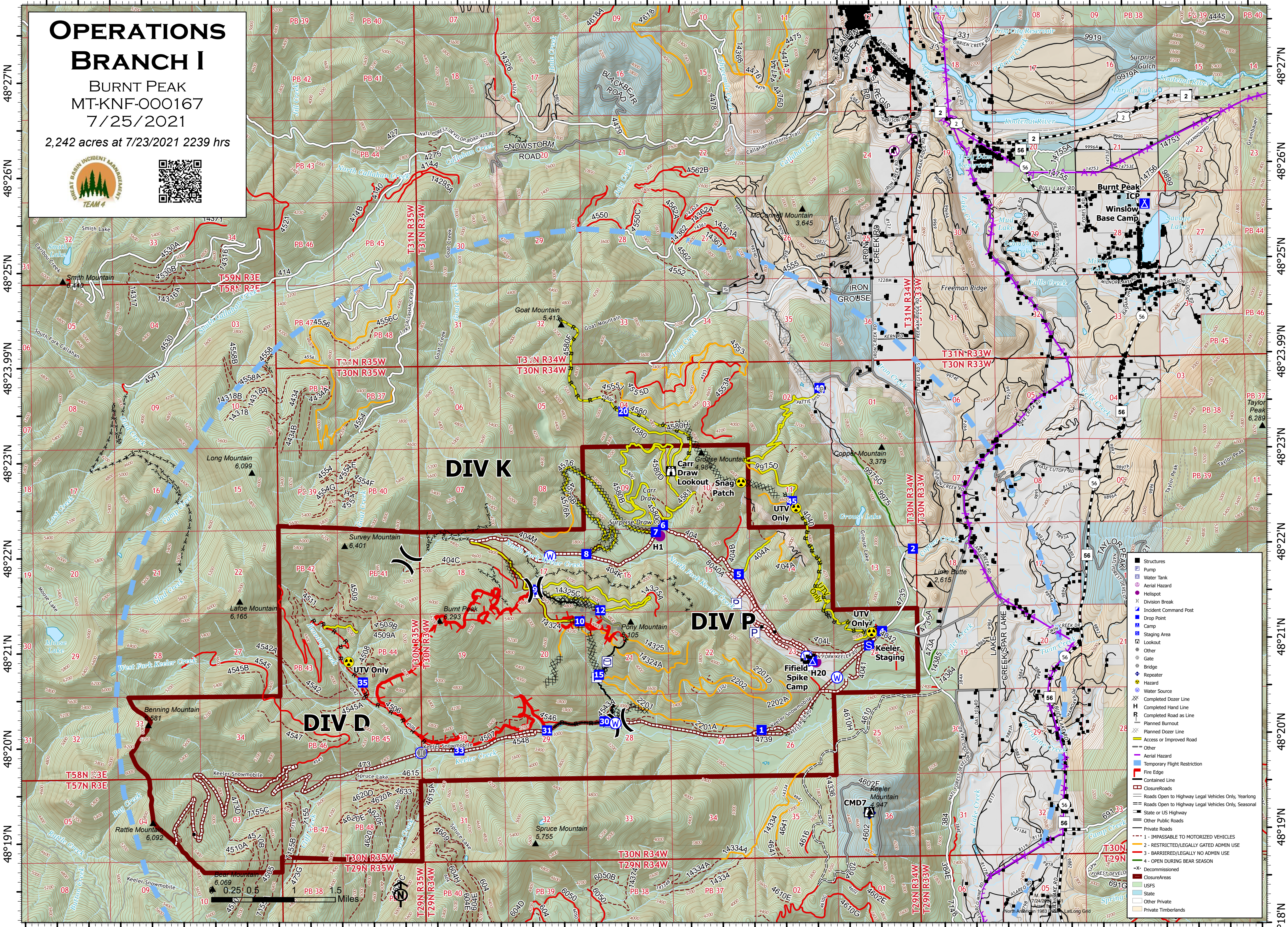


OPERATIONS BRANCH I

BURNT PEAK
MT-KNF-000167
7/25/2021

2,242 acres at 7/23/2021 2239 hrs



48°27'N
48°26'N
48°25'N
48°23.99'N
48°23'N
48°22'N
48°21'N
48°20'N
48°19'N

48°27'N
48°26'N
48°25'N
48°23.99'N
48°23'N
48°22'N
48°21'N
48°20'N
48°19'N

- Structures
- ⊕ Pump
- ⊕ Water Tank
- ⊕ Aerial Hazard
- ⊕ Helispot
- ⊕ Division Break
- ⊕ Incident Command Post
- ⊕ Drop Point
- ⊕ Camp
- ⊕ Staging Area
- ⊕ Lookout
- ⊕ Gate
- ⊕ Other
- ⊕ Bridge
- ⊕ Repeater
- ⊕ Hazard
- ⊕ Water Source
- ⊕ Completed Dozer Line
- ⊕ Completed Hand Line
- ⊕ Completed Road as Line
- ⊕ Planned Burnout
- ⊕ Planned Dozer Line
- ⊕ Access or Improved Road
- ⊕ Other
- ⊕ Aerial Hazard
- ⊕ Temporary Flight Restriction
- ⊕ Fire Edge
- ⊕ Contained Line
- ⊕ Closure Roads
- ⊕ Roads Open to Highway Legal Vehicles Only, Yearlong
- ⊕ Roads Open to Highway Legal Vehicles Only, Seasonal
- ⊕ State or US Highway
- ⊕ Other Public Roads
- ⊕ Private Roads
- ⊕ 1 - IMPASSABLE TO MOTORIZED VEHICLES
- ⊕ 2 - RESTRICTED/LEGALLY GATED ADMIN USE
- ⊕ 3 - BARRIRED/LEGALLY NO ADMIN USE
- ⊕ 4 - OPEN DURING BEAR SEASON
- ⊕ Decommissioned
- ⊕ Closure Areas
- ⊕ USFS
- ⊕ State
- ⊕ Other Private
- ⊕ Private Timberlands

0.25 0.5 Miles