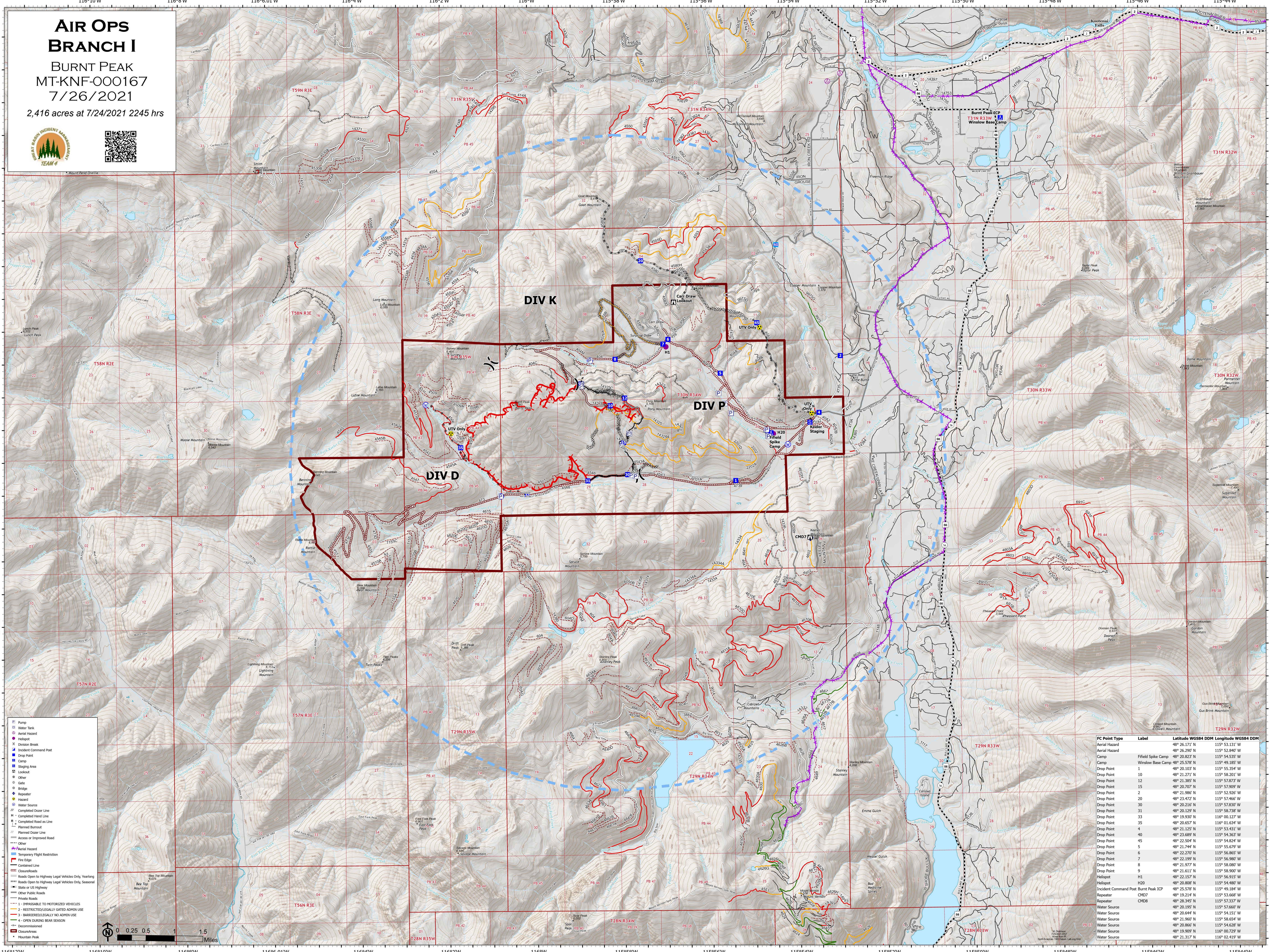


AIR OPS BRANCH I

BURNT PEAK
MT-KNF-000167
7/26/2021
2,416 acres at 7/24/2021 2245 hrs



Mount Peak Oriente



	Pump
	Water Tank
	Aerial Hazard
	Division Break
	Incident Command Post
	Drop Point
	Camp
	Staging Area
	Lookout
	Other
	Gate
	Bridge
	Repeater
	Hazard
	Water Source
	Completed Dozer Line
	Completed Hand Line
	Completed Road as Line
	Planned Burnout
	Planned Dozer Line
	Access or Improved Road
	Other
	Aerial Hazard
	Temporary Flight Restriction
	Fire Edge
	Contained Line
	Closure/Road
	Roads Open to Highway Legal Vehicles Only, Yearlong
	Roads Open to Highway Legal Vehicles Only, Seasonal
	State or US Highway
	Other Public Roads
	Private Roads
	1 - INACCESSIBLE TO MOTORIZED VEHICLES
	2 - RESTRICTED/LEGALLY GATED ADMIN USE
	3 - BARRIERED/LEGALLY NO ADMIN USE
	4 - OPEN DURING BEAR SEASON
	Decommissioned
	Closure/ness
	Mountain Peak

FC Point Type	Label	Latitude WGS84 DDM	Longitude WGS84 DDM
Aerial Hazard		48° 26.171' N	115° 52.840' W
Aerial Hazard		48° 26.290' N	115° 52.840' W
Camp	Field Spike Camp	48° 20.823' N	115° 54.535' W
Camp	Winlow Base Camp	48° 25.578' N	115° 49.185' W
Drop Point	1	48° 20.103' N	115° 55.354' W
Drop Point	10	48° 21.271' N	115° 58.201' W
Drop Point	12	48° 21.385' N	115° 59.127' W
Drop Point	15	48° 20.707' N	115° 57.509' W
Drop Point	2	48° 21.986' N	115° 52.926' W
Drop Point	20	48° 23.472' N	115° 57.466' W
Drop Point	30	48° 20.216' N	115° 57.830' W
Drop Point	31	48° 20.129' N	115° 58.738' W
Drop Point	33	48° 19.939' N	115° 59.127' W
Drop Point	35	48° 20.657' N	116° 01.634' W
Drop Point	4	48° 21.125' N	115° 53.431' W
Drop Point	40	48° 23.689' N	115° 54.363' W
Drop Point	45	48° 22.504' N	115° 54.824' W
Drop Point	5	48° 21.744' N	115° 55.675' W
Drop Point	6	48° 22.274' N	115° 56.865' W
Drop Point	7	48° 22.199' N	115° 56.980' W
Drop Point	8	48° 21.977' N	115° 58.080' W
Drop Point	9	48° 21.611' N	115° 58.900' W
Drop Point		48° 26.171' N	115° 52.840' W
Heliport	H1	48° 22.157' N	115° 56.915' W
Heliport	H20	48° 20.898' N	115° 54.460' W
Incident Command Post	Burnt Peak ICP	48° 25.578' N	115° 49.184' W
Repeater	CM7	48° 19.214' N	115° 53.668' W
Repeater	CM7	48° 19.214' N	115° 53.668' W
Repeater	CM8	48° 28.345' N	115° 57.337' W
Water Source	CM8	48° 20.195' N	115° 57.660' W
Water Source		48° 24.644' N	115° 54.151' W
Water Source		48° 21.364' N	115° 59.127' W
Water Source		48° 20.866' N	115° 54.628' W
Water Source		48° 19.909' N	116° 00.729' W
Water Source		48° 21.317' N	116° 02.419' W