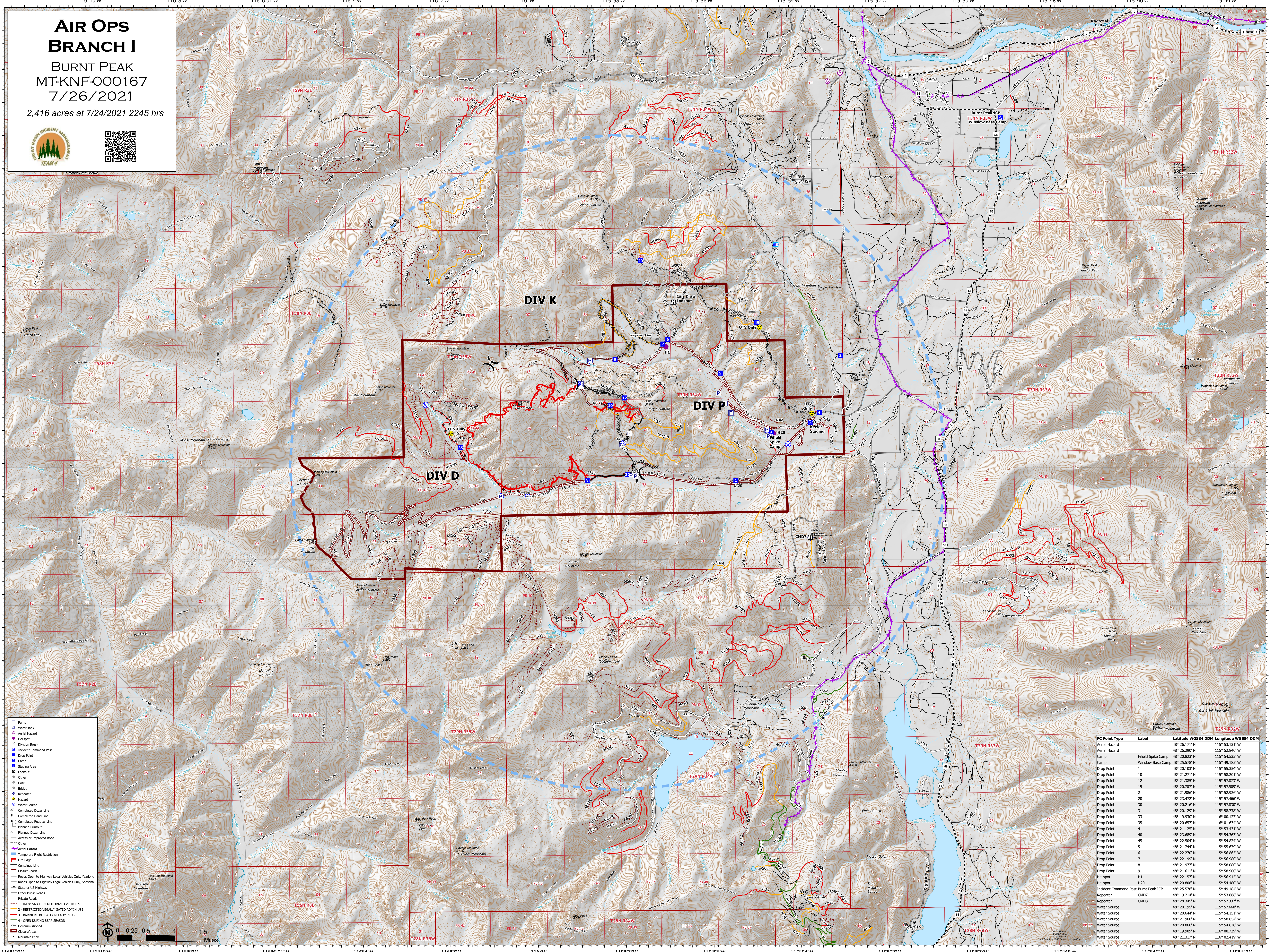


# AIR OPS BRANCH I

BURNT PEAK  
MT-KNF-000167  
7/26/2021

2,416 acres at 7/24/2021 2245 hrs



- Pump
- Water Tank
- Aerial Hazard
- Division Break
- Incident Command Post
- Drop Point
- Camp
- Staging Area
- Lookout
- Other
- Gate
- Bridge
- Repeater
- Hazard
- Water Source
- Completed Dozer Line
- Completed Hand Line
- Completed Road as Line
- Planned Burnout
- Planned Dozer Line
- Access or Improved Road
- Other
- Aerial Hazard
- Temporary Flight Restriction
- Fire Edge
- Contained Line
- Closed Roads
- Roads Open to Highway Legal Vehicles Only, Yearlong
- Roads Open to Highway Legal Vehicles Only, Seasonal
- State or US Highway
- Other Public Roads
- Private Roads
- 1 - INACCESSIBLE TO MOTORIZED VEHICLES
- 2 - RESTRICTED/LEGALLY GATED ADMIN USE
- 3 - BARRIERED/LEGALLY NO ADMIN USE
- 4 - OPEN DURING BEAR SEASON
- Decommissioned
- Closedness
- Mountain Peak

FC Point Type	Label	Latitude WGS84 DDM	Longitude WGS84 DDM
Aerial Hazard		48° 26.171' N	115° 54.321' W
Aerial Hazard		48° 26.290' N	115° 54.240' W
Camp	Field Spike Camp	48° 20.823' N	115° 54.535' W
Camp	Winslow Base Camp	48° 25.578' N	115° 49.185' W
Drop Point	1	48° 20.103' N	115° 55.354' W
Drop Point	10	48° 21.271' N	115° 58.201' W
Drop Point	12	48° 21.383' N	115° 50.837' W
Drop Point	15	48° 20.707' N	115° 57.509' W
Drop Point	2	48° 21.986' N	115° 52.926' W
Drop Point	20	48° 23.472' N	115° 57.466' W
Drop Point	30	48° 20.216' N	115° 57.830' W
Drop Point	31	48° 20.129' N	115° 58.738' W
Drop Point	33	48° 19.939' N	115° 50.127' W
Drop Point	35	48° 20.657' N	115° 01.634' W
Drop Point	4	48° 21.125' N	115° 53.431' W
Drop Point	40	48° 23.689' N	115° 54.363' W
Drop Point	45	48° 22.504' N	115° 54.824' W
Drop Point	5	48° 21.744' N	115° 55.679' W
Drop Point	6	48° 22.270' N	115° 56.885' W
Drop Point	7	48° 22.199' N	115° 56.980' W
Drop Point	8	48° 21.977' N	115° 58.080' W
Drop Point	9	48° 21.611' N	115° 58.900' W
Helipoint	H1	48° 22.157' N	115° 56.915' W
Helipoint	H20	48° 20.808' N	115° 54.480' W
Incident Command Post	Burnt Peak ICP	48° 25.578' N	115° 49.184' W
Repeater	CM07	48° 19.214' N	115° 53.668' W
Repeater	CM08	48° 28.345' N	115° 57.337' W
Water Source	CM08	48° 20.195' N	115° 57.660' W
Water Source		48° 24.644' N	115° 54.151' W
Water Source		48° 21.360' N	115° 50.837' W
Water Source		48° 20.868' N	115° 54.628' W
Water Source		48° 19.909' N	115° 00.729' W
Water Source		48° 21.317' N	115° 02.419' W

