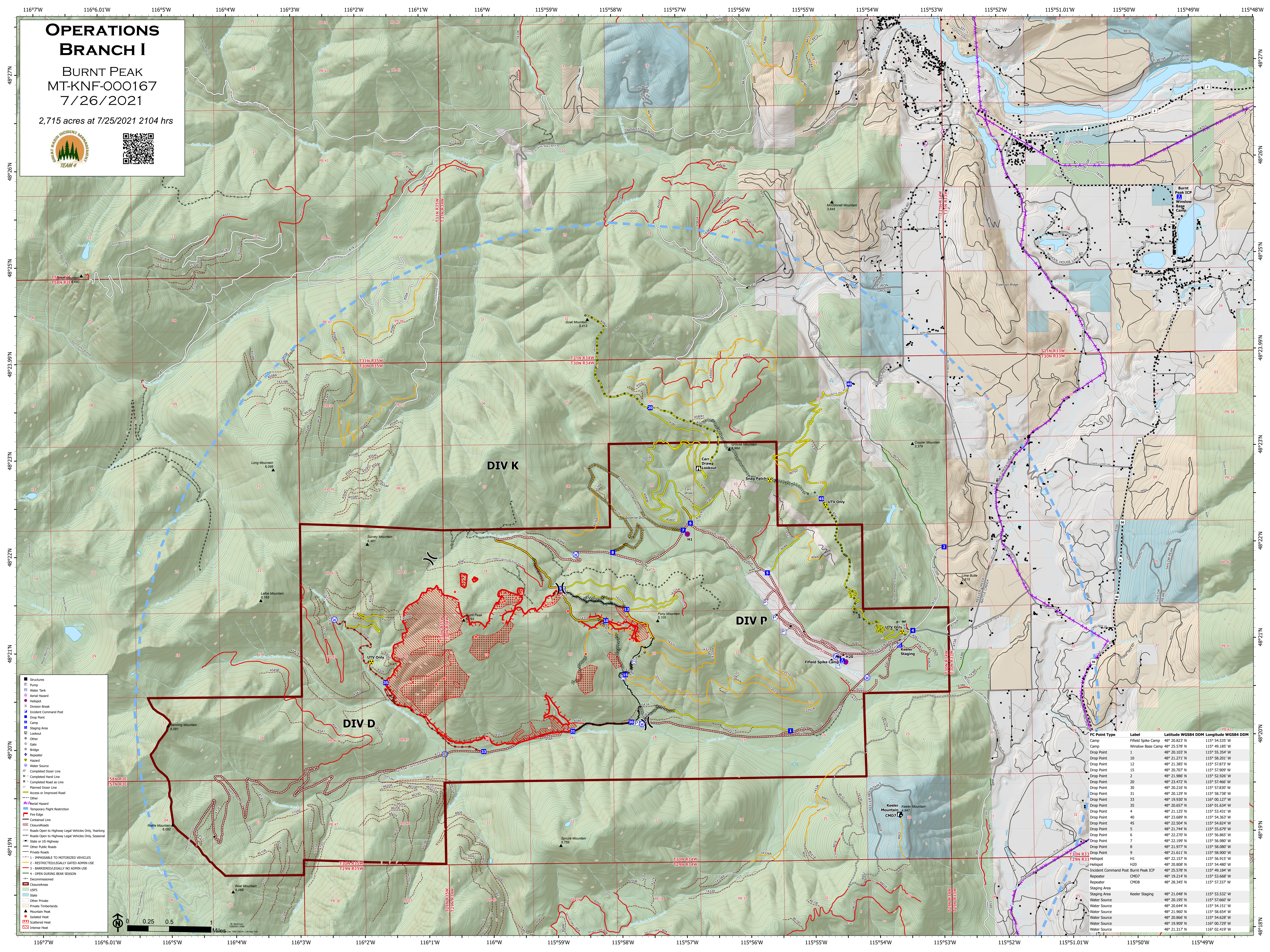


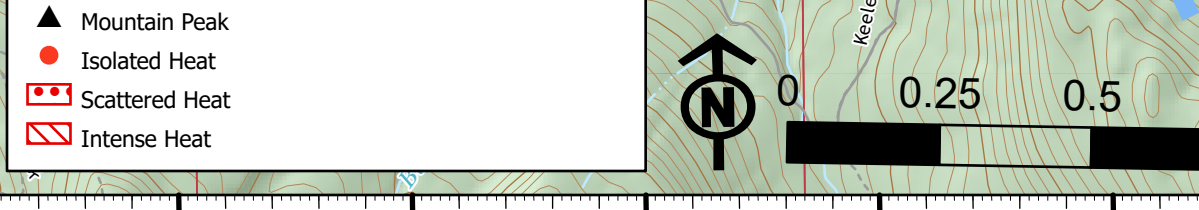
# OPERATIONS BRANCH I

BURNT PEAK  
MT-KNF-000167  
7/26/2021

2,715 acres at 7/25/2021 2104 hrs



- Structures
- ⊕ Pump
- ⊕ Water Tank
- ⊕ Aerial Hazard
- ⊕ Helispot
- ⊕ Division Break
- ⊕ Incident Command Post
- ⊕ Fire Point
- ⊕ Camp
- ⊕ Staging Area
- ⊕ Lookout
- ⊕ Gate
- ⊕ Bridge
- ⊕ Repeater
- ⊕ Hazard
- ⊕ Water Source
- ⊕ Completed Dozer Line
- ⊕ Completed Hand Line
- ⊕ Completed Road on Line
- ⊕ Planned Dozer Line
- ⊕ Access or Improved Road
- ⊕ Other
- ⊕ Aerial Hazard
- ⊕ Temporary Flight Restriction
- ⊕ Fire Edge
- ⊕ Contained Line
- ⊕ Closure/Roads
- ⊕ Roads Open to Highway Legal Vehicles Only, Yearning
- ⊕ Roads Open to Highway Legal Vehicles Only, Seasonal
- ⊕ State or US Highway
- ⊕ Other Public Roads
- ⊕ Private Roads
- ⊕ 1 - IMPASSABLE TO MOTORIZED VEHICLES
- ⊕ 2 - RESTRICTED/LEGALLY GATED ADMIN USE
- ⊕ 3 - BARRIERED/LEGALLY NO ADMIN USE
- ⊕ 4 - OPEN DURING BEAR SEASON
- ⊕ Decommissioned
- ⊕ Closure/Areas
- ⊕ USFS
- ⊕ State
- ⊕ Other Private
- ⊕ Private Timberlands
- ⊕ Mountain Peak
- ⊕ Isolated Heat
- ⊕ Scattered Heat
- ⊕ Intense Heat



**DIV D**

**DIV K**

**DIV P**

FC Point Type	Label	Latitude WGS84 DDM	Longitude WGS84 DDM
Camp	Field Spike Camp	48° 20.823' N	115° 54.533' W
Camp	Winslow Base Camp	48° 25.578' N	115° 49.165' W
Drop Point	1	48° 20.103' N	115° 55.354' W
Drop Point	10	48° 21.271' N	115° 58.201' W
Drop Point	12	48° 21.385' N	115° 57.873' W
Drop Point	15	48° 20.707' N	115° 57.909' W
Drop Point	2	48° 21.986' N	115° 52.526' W
Drop Point	20	48° 23.472' N	115° 57.666' W
Drop Point	30	48° 20.216' N	115° 57.830' W
Drop Point	31	48° 20.129' N	115° 58.738' W
Drop Point	33	48° 19.930' N	116° 00.127' W
Drop Point	35	48° 20.657' N	116° 01.634' W
Drop Point	4	48° 21.125' N	115° 53.431' W
Drop Point	40	48° 23.689' N	115° 54.803' W
Drop Point	45	48° 22.504' N	115° 54.824' W
Drop Point	5	48° 21.744' N	115° 55.679' W
Drop Point	6	48° 22.270' N	115° 56.865' W
Drop Point	7	48° 22.199' N	115° 56.980' W
Drop Point	8	48° 21.977' N	115° 58.080' W
Drop Point	9	48° 21.611' N	115° 58.900' W
Helispot	H1	48° 22.157' N	115° 56.915' W
Helispot	H20	48° 20.808' N	115° 54.480' W
Incident Command Post	Burnt Peak ICP	48° 25.578' N	115° 49.164' W
Repeater	CMD7	48° 19.214' N	115° 53.668' W
Repeater	CMD8	48° 28.345' N	115° 57.337' W
Staging Area	Keeler Staging	48° 21.048' N	115° 53.532' W
Water Source	Keeler Staging	48° 20.195' N	115° 57.660' W
Water Source	Keeler Staging	48° 20.644' N	115° 54.151' W
Water Source	Keeler Staging	48° 21.960' N	115° 58.654' W
Water Source	Keeler Staging	48° 20.866' N	115° 54.628' W
Water Source	Keeler Staging	48° 19.909' N	116° 00.799' W
Water Source	Keeler Staging	48° 21.317' N	116° 02.419' W