

116°9'W 116°8'W 116°7'W 116°6.01'W 116°5'W 116°4'W 116°3'W 116°2'W 116°1'W 116°W 115°59'W 115°58'W 115°57'W 115°56'W 115°55'W 115°54'W 115°53'W 115°52'W 115°51'W 115°50'W

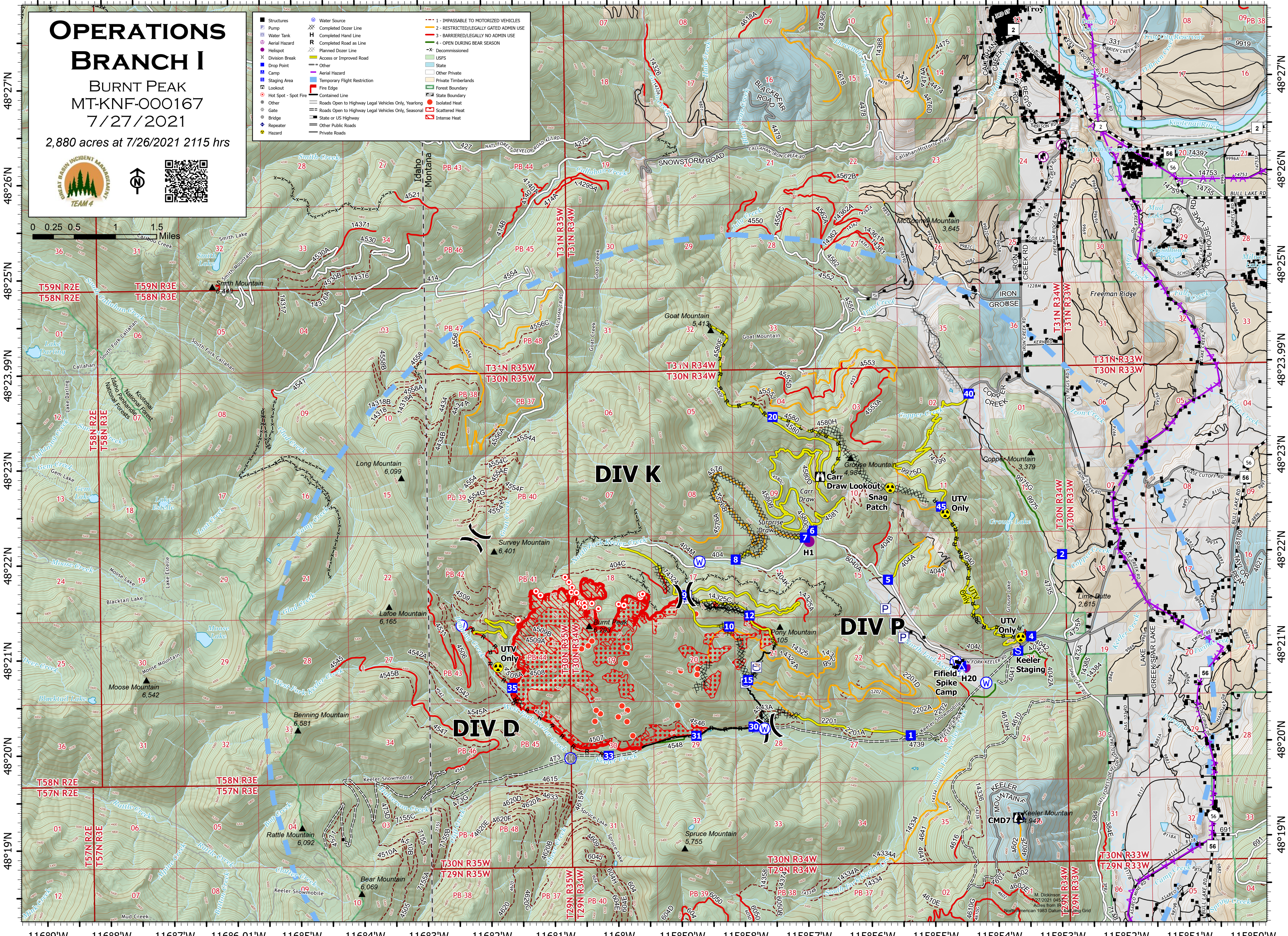
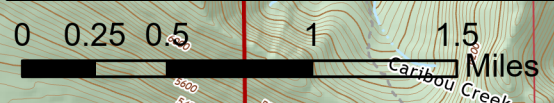
OPERATIONS BRANCH I

BURNT PEAK
MT-KNF-000167
7/27/2021

2,880 acres at 7/26/2021 2115 hrs



■ Structures	⊙ Water Source	---
⊙ Pump	⊗ Completed Dozer Line	---
⊙ Water Tank	H Completed Hand Line	---
⊙ Aerial Hazard	R Completed Road as Line	---
⊙ Helispot	⊗ Planned Dozer Line	-X Decommissioned
⊙ Division Break	⊗ Access or Improved Road	USFS
⊙ Drop Point	⊗ Other	State
⊙ Camp	⊗ Aerial Hazard	Other Private
⊙ Staging Area	⊗ Temporary Flight Restriction	Private Timberlands
⊙ Lookout	⊗ Fire Edge	State Boundary
⊙ Hot Spot - Spot Fire	⊗ Contained Line	State Boundary
⊙ Other	⊗ Roads Open to Highway Legal Vehicles Only, Yearlong	Isolated Heat
⊙ Gate	⊗ Roads Open to Highway Legal Vehicles Only, Seasonal	Scattered Heat
⊙ Bridge	⊗ State or US Highway	Intense Heat
⊙ Repeater	⊗ Other Public Roads	
⊙ Hazard	⊗ Private Roads	



48°27'N
48°26'N
48°25'N
48°23.99'N
48°23'N
48°22'N
48°21'N
48°20'N
48°19'N

48°27'N
48°26'N
48°25'N
48°23.99'N
48°23'N
48°22'N
48°21'N
48°20'N
48°19'N

116°9'W 116°8'W 116°7'W 116°6.01'W 116°5'W 116°4'W 116°3'W 116°2'W 116°1'W 116°W 115°59'W 115°58'W 115°57'W 115°56'W 115°55'W 115°54'W 115°53'W 115°52'W 115°51'W 115°50'W