

116°9'W 116°8'W 116°7'W 116°6.01'W 116°5'W 116°4'W 116°3'W 116°2'W 116°1'W 116°W 115°59'W 115°58'W 115°57'W 115°56'W 115°55'W 115°54'W 115°53'W 115°52'W 115°51'W 115°50'W

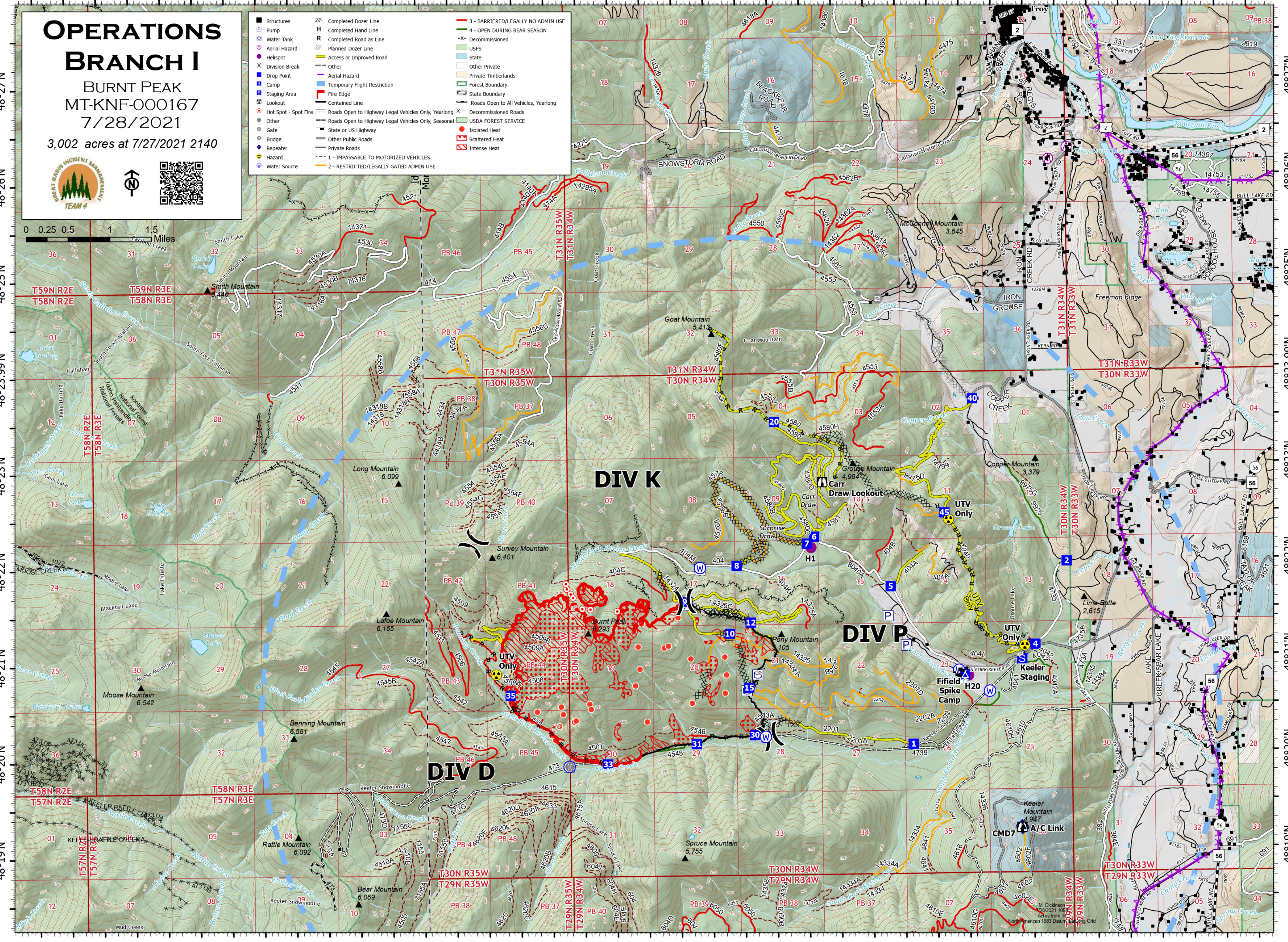
OPERATIONS BRANCH I

BURNT PEAK
MT-KNF-000167
7/28/2021

3,002 acres at 7/27/2021 2140



Structures	Completed Dozer Line	3 - BARRIERED/LEGALLY NO ADMIN USE
Pump	Completed Hand Line	4 - OPEN DURING BEAR SEASON
Water Tank	Completed Road as Line	-X- Decommissioned
Aerial Hazard	Planned Dozer Line	USFS
Helispot	Access or Improved Road	State
Division Break	Other	Other Private
Drop Point	Aerial Hazard	Private Timberlands
Camp	Temporary Flight Restriction	Forest Boundary
Staging Area	Fire Edge	State Boundary
Lookout	Contained Line	Roads Open to All Vehicles, Yearlong
Hot Spot - Spot Fire	Roads Open to Highway Legal Vehicles Only, Yearlong	Decommissioned Roads
Other	Roads Open to Highway Legal Vehicles Only, Seasonal	USDA FOREST SERVICE
Gate	Private Roads	Isolated Heat
Bridge	Other Public Roads	Scattered Heat
Repeater	Private Roads	Intense Heat
Hazard	1 - IMPASSABLE TO MOTORIZED VEHICLES	
Water Source	2 - RESTRICTED/LEGALLY GATED ADMIN USE	



DIV K

DIV P

DIV D

116°9'W 116°8'W 116°7'W 116°6.01'W 116°5'W 116°4'W 116°3'W 116°2'W 116°1'W 116°W 115°59'W 115°58'W 115°57'W 115°56'W 115°55'W 115°54'W 115°53'W 115°52'W 115°51'W 115°50'W