

116°9'W 116°8'W 116°7'W 116°6.01'W 116°5'W 116°4'W 116°3'W 116°2'W 116°1'W 116°W 115°59'W 115°58'W 115°57'W 115°56'W 115°55'W 115°54'W 115°53'W 115°52'W 115°51'W 115°50'W

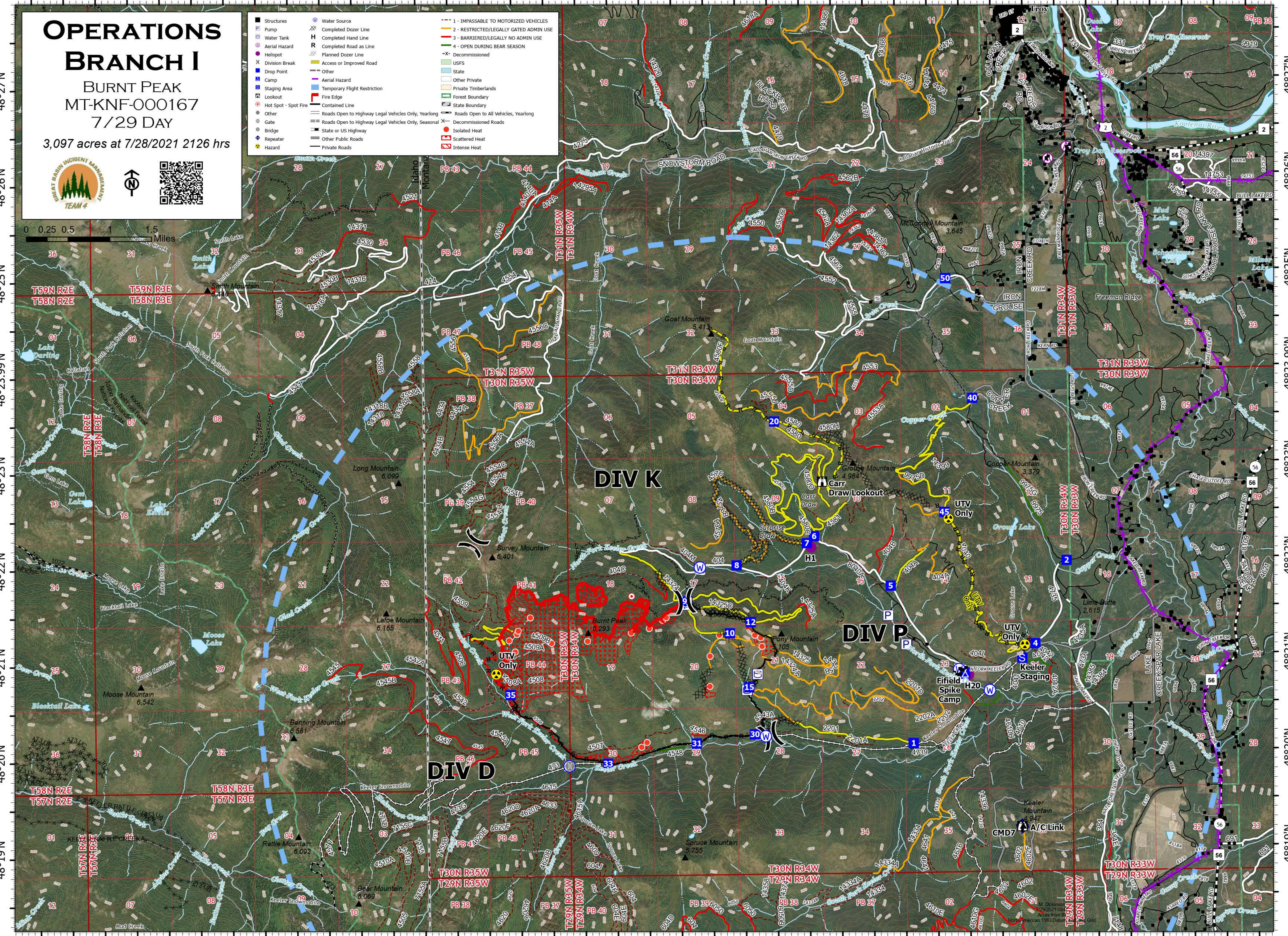
OPERATIONS BRANCH I

BURNT PEAK
MT-KNF-000167
7/29 DAY

3,097 acres at 7/28/2021 2126 hrs



■ Structures	○ Water Source	--- 1 - IMPASSABLE TO MOTORIZED VEHICLES
⊕ Pump	⊗ Completed Dozer Line	--- 2 - RESTRICTED/LEGALLY GATED ADMIN USE
⊕ Water Tank	H Completed Hand Line	--- 3 - BARRIERED/LEGALLY NO ADMIN USE
⊕ Aerial Hazard	R Completed Road as Line	--- 4 - OPEN DURING BEAR SEASON
⊕ Helispot	⊗ Planned Dozer Line	-X- Decommissioned
⊕ Division Break	⊗ Access or Improved Road	USFS
⊕ Drop Point	⊗ Other	State
⊕ Camp	⊗ Aerial Hazard	Other Private
⊕ Staging Area	⊗ Temporary Flight Restriction	Private Timberlands
⊕ Lookout	⊗ Fire Edge	Forest Boundary
⊕ Hot Spot - Spot Fire	⊗ Contained Line	State Boundary
⊕ Other	⊗ Roads Open to Highway Legal Vehicles Only, Yearlong	Decommissioned Roads
⊕ Gate	⊗ Roads Open to Highway Legal Vehicles Only, Seasonal	Isolated Heat
⊕ Bridge	⊗ State or US Highway	Scattered Heat
⊕ Repeater	⊗ Other Public Roads	Intense Heat
⊕ Hazard	⊗ Private Roads	



116°9'W 116°8'W 116°7'W 116°6.01'W 116°5'W 116°4'W 116°3'W 116°2'W 116°1'W 116°W 115°59'W 115°58'W 115°57'W 115°56'W 115°55'W 115°54'W 115°53'W 115°52'W 115°51'W 115°50'W

48°27'N
48°26'N
48°25'N
48°23.99'N
48°23'N
48°22'N
48°21'N
48°20'N
48°19'N

48°27'N
48°26'N
48°25'N
48°23.99'N
48°23'N
48°22'N
48°21'N
48°20'N
48°19'N