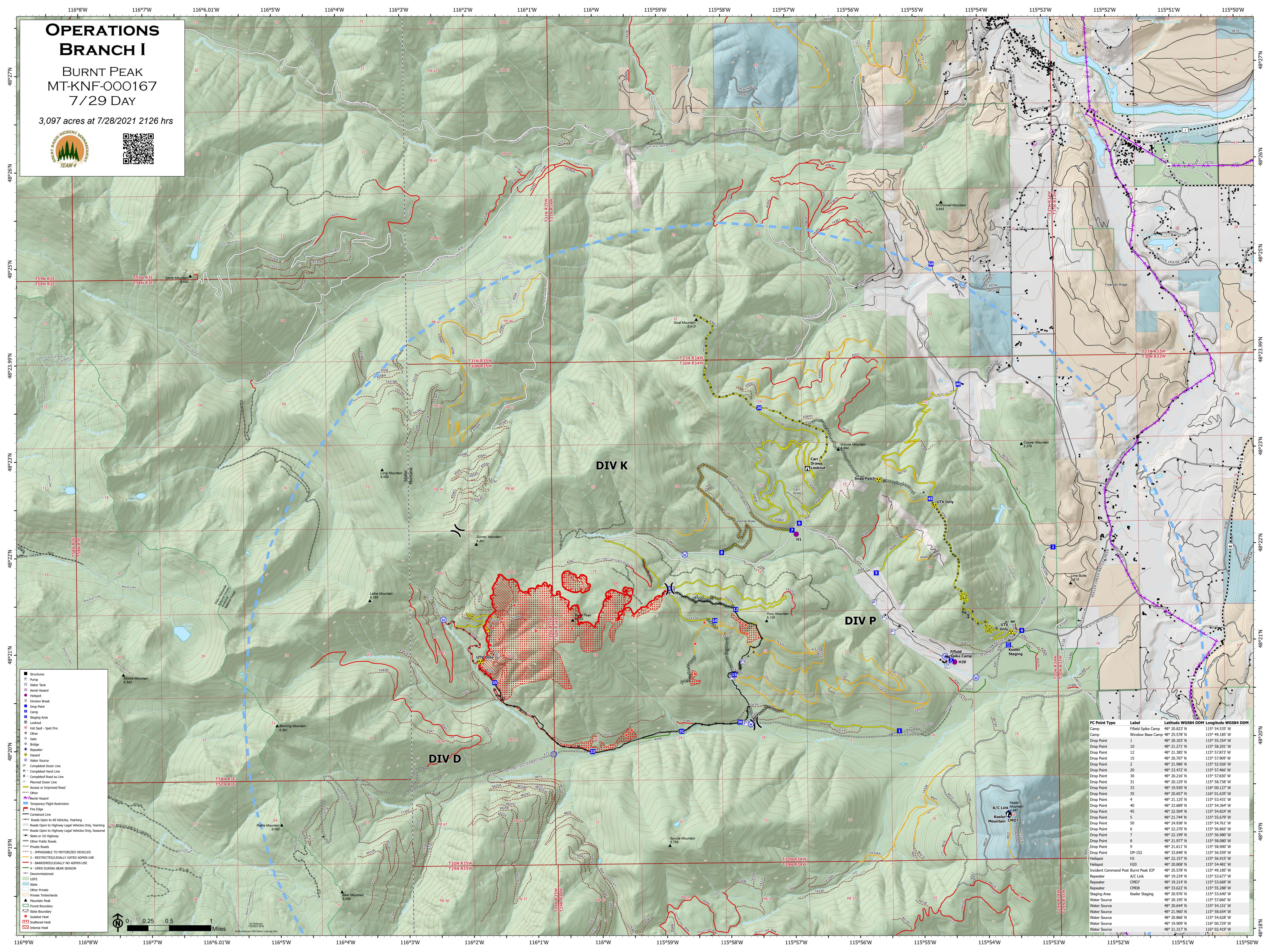


OPERATIONS BRANCH I

BURNT PEAK
MT-KNF-000167
7/29 DAY

3,097 acres at 7/28/2021 2126 hrs



- Structures
- ⊕ Pump
- ⊕ Water Tank
- ⊕ Aerial Hazard
- ⊕ Helispot
- ⊕ Division Break
- ⊕ Drop Point
- ⊕ Camp
- ⊕ Staging Area
- ⊕ Lookout
- ⊕ Hot Spot - Spot Fire
- ⊕ Other
- ⊕ Gate
- ⊕ Bridge
- ⊕ Repeater
- ⊕ Hazard
- ⊕ Water Source
- ⊕ Completed Dozer Line
- H - Completed Hand Line
- R - Planned Road as Line
- ⊕ Completed Dozer Line
- ⊕ Access or Improved Road
- ⊕ Other
- ⊕ Aerial Hazard
- ⊕ Temporary Flight Restriction
- ⊕ Fire Edge
- ⊕ Contained Line
- ⊕ Roads Open to All Vehicles, Yearling
- ⊕ Roads Open to Highway Legal Vehicles Only, Yearling
- ⊕ Roads Open to Highway Legal Vehicles Only, Seasonal
- ⊕ State or US Highway
- ⊕ Other Public Roads
- ⊕ Private Roads
- ⊕ 1 - UNPARKABLE TO MOTORIZED VEHICLES
- ⊕ 2 - RESTRICTED/LEGALLY GATED ADMIN USE
- ⊕ 3 - BARRIERED/LEGALLY NO ADMIN USE
- ⊕ 4 - OPEN DURING BEAR SEASON
- ⊕ Decommissioned
- ⊕ USFS
- ⊕ State
- ⊕ Other Private
- ⊕ Private Timberlands
- ⊕ Mountain Peak
- ⊕ Forest Boundary
- ⊕ State Boundary
- ⊕ Isolated Heat
- ⊕ Scattered Heat
- ⊕ Intense Heat

FC Point Type	Label	Latitude WGS84 DDM	Longitude WGS84 DDM
Camp	Fifield Spike Camp	48° 20.823' N	115° 54.535' W
Camp	Winslow Base Camp	48° 25.578' N	115° 49.185' W
Drop Point	1	48° 20.103' N	115° 55.354' W
Drop Point	10	48° 21.271' N	115° 58.200' W
Drop Point	12	48° 21.385' N	115° 57.873' W
Drop Point	15	48° 20.707' N	115° 57.909' W
Drop Point	2	48° 21.986' N	115° 52.926' W
Drop Point	20	48° 23.472' N	115° 57.466' W
Drop Point	30	48° 20.216' N	115° 57.830' W
Drop Point	31	48° 21.204' N	115° 58.798' W
Drop Point	33	48° 19.930' N	116° 00.127' W
Drop Point	35	48° 20.657' N	116° 01.635' W
Drop Point	4	48° 21.125' N	115° 53.431' W
Drop Point	40	48° 23.689' N	115° 54.364' W
Drop Point	45	48° 22.504' N	115° 54.824' W
Drop Point	5	48° 21.204' N	115° 55.799' W
Drop Point	50	48° 24.938' N	115° 54.761' W
Drop Point	6	48° 22.270' N	115° 56.865' W
Drop Point	7	48° 22.199' N	115° 56.980' W
Drop Point	8	48° 21.977' N	115° 58.080' W
Drop Point	9	48° 21.611' N	115° 58.900' W
Drop Point	DP-152	48° 23.846' N	115° 56.559' W
Helispot	H1	48° 22.157' N	115° 56.915' W
Helispot	H20	48° 20.808' N	115° 54.481' W
Incident Command Post	Burnt Peak ICP	48° 25.578' N	115° 49.185' W
Repeater	A/C Link	48° 19.234' N	115° 53.677' W
Repeater	CHD7	48° 19.214' N	115° 53.669' W
Repeater	CHD8	48° 23.622' N	115° 55.828' W
Staging Area	Keeler Staging	48° 20.976' N	115° 53.640' W
Water Source	Keeler Staging	48° 20.195' N	115° 57.660' W
Water Source		48° 20.644' N	115° 54.151' W
Water Source		48° 21.960' N	115° 58.654' W
Water Source		48° 20.866' N	115° 54.628' W
Water Source		48° 19.909' N	116° 00.739' W
Water Source		48° 21.317' N	116° 02.419' W

