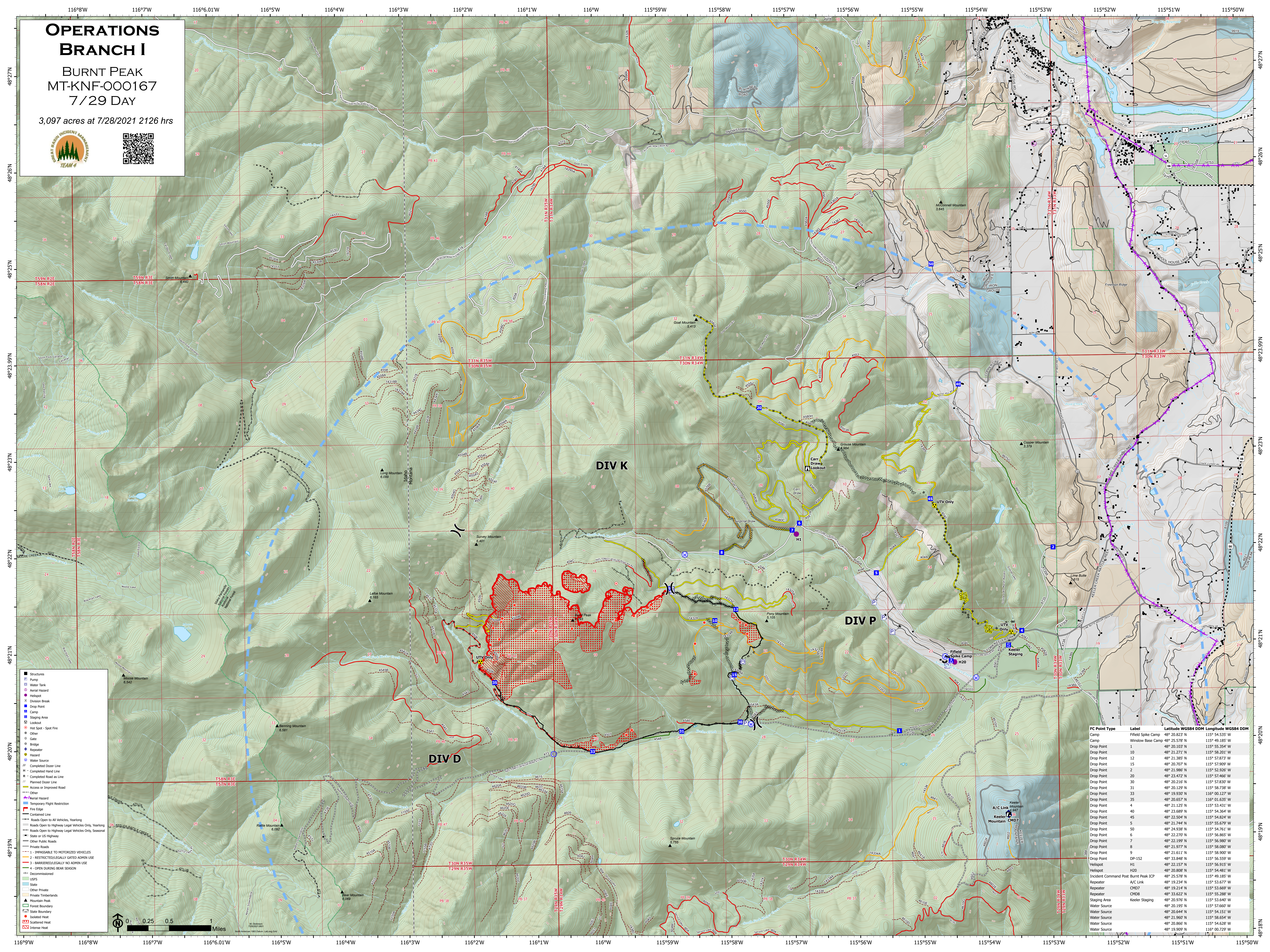


OPERATIONS BRANCH I

BURNT PEAK
MT-KNF-000167
7/29 DAY

3,097 acres at 7/28/2021 2126 hrs



Legend

- Structures
- Pump
- Water Tank
- Aerial Hazard
- Hot Spot
- Division Break
- Drop Point
- Camp
- Staging Area
- Lookout
- Hot Spot - Spot Fire
- Other
- State
- Bridge
- Repeater
- Hazard
- Water Source
- Completed Dozer Line
- Completed Hand Line
- Planned Dozer Line
- Access or Improved Road
- Other
- Aerial Hazard
- Temporary Flight Restriction
- Fire Edge
- Contained Line
- Roads Open to All Vehicles, Yearling
- Roads Open to Highway Legal Vehicles Only, Yearling
- Roads Open to Highway Legal Vehicles Only, Seasonal
- State or US Highway
- Other Public Roads
- Private Roads
- 1 - INACCESSIBLE TO MOTORIZED VEHICLES
- 2 - RESTRICTED/LEGALLY GATED ADMIN USE
- 3 - BARRIERED/LEGALLY NO ADMIN USE
- 4 - OPEN DURING BEAR SEASON
- Decommissioned
- USFS
- State
- Other Private
- Private Timberlands
- Mountain Peak
- Forest Boundary
- State Boundary
- Isolated Heat
- Scattered Heat
- Intense Heat

FC Point Type	Label	Latitude WGS84 DDM	Longitude WGS84 DDM
Camp	Field Spike Camp	48° 20.823' N	115° 54.535' W
Camp	Window Base Camp	48° 25.578' N	115° 49.185' W
Drop Point	1	48° 20.103' N	115° 55.554' W
Drop Point	10	48° 21.271' N	115° 58.201' W
Drop Point	12	48° 21.385' N	115° 57.873' W
Drop Point	15	48° 20.707' N	115° 57.909' W
Drop Point	2	48° 21.986' N	115° 52.926' W
Drop Point	20	48° 23.472' N	115° 57.466' W
Drop Point	26	48° 20.216' N	115° 57.030' W
Drop Point	31	48° 20.129' N	115° 58.738' W
Drop Point	33	48° 19.930' N	116° 00.127' W
Drop Point	35	48° 20.657' N	116° 01.635' W
Drop Point	4	48° 21.125' N	115° 53.431' W
Drop Point	40	48° 23.689' N	115° 54.364' W
Drop Point	45	48° 22.504' N	115° 54.034' W
Drop Point	5	48° 21.744' N	115° 55.729' W
Drop Point	50	48° 24.938' N	115° 54.761' W
Drop Point	6	48° 22.270' N	115° 56.865' W
Drop Point	7	48° 22.199' N	115° 56.980' W
Drop Point	8	48° 21.977' N	115° 58.080' W
Drop Point	9	48° 21.611' N	115° 58.900' W
Drop Point	09-152	48° 33.848' N	115° 56.559' W
Helispot	H1	48° 22.157' N	115° 56.915' W
Helispot	H20	48° 20.808' N	115° 54.481' W
Camp	Incident Command Post Burnt Peak ICP	48° 25.578' N	115° 49.185' W
Repeater	A/C Link	48° 19.254' N	115° 53.677' W
Repeater	CM07	48° 20.214' N	115° 53.669' W
Repeater	CM08	48° 33.622' N	115° 55.288' W
Staging Area	Keeler Staging	48° 20.976' N	115° 53.640' W
Water Source	Water Source	48° 20.195' N	115° 57.660' W
Water Source	Water Source	48° 20.644' N	115° 54.151' W
Water Source	Water Source	48° 21.960' N	115° 58.654' W
Water Source	Water Source	48° 20.866' N	115° 54.236' W
Water Source	Water Source	48° 19.909' N	116° 00.729' W

