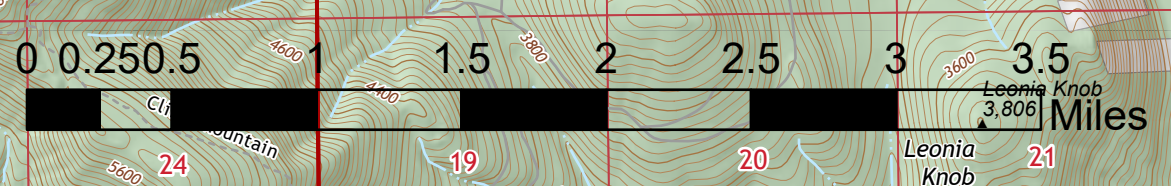
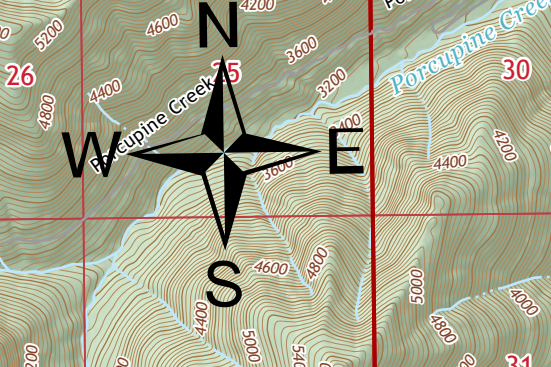


Air Ops
 Burnt Peak South Yaak
 MT-KNF-000167 MT-KNF-000201
 7/30/2021



- Aerial Hazard
- Dip Site
- Helispot
- Helibase
- Unimproved Landing Area
- Division Break
- Incident Command Post
- Drop Point
- Camp
- Staging Area
- Lookout
- Hot Spot - Spot Fire
- Other
- Gate
- Bridge
- Water Development or Draft Site
- Repeater
- Hazard
- Water Source



CG Team 6
 7/29/2021 2308
 Acres from IR
 North American 1983 Datum, Lat/Long

FC Point Type	Label	Latitude WGS84 DDM	Longitude WGS84 DDM
Aerial Hazard		48° 26.171' N	115° 53.132' W
Aerial Hazard		48° 26.291' N	115° 52.841' W
Camp	Field Spike Camp	48° 20.823' N	115° 54.535' W
Camp	Winslow Base Camp	48° 25.578' N	115° 49.185' W
Drop Point	1	48° 20.103' N	115° 55.354' W
Drop Point	10	48° 21.271' N	115° 58.201' W
Drop Point	12	48° 21.385' N	115° 57.873' W
Drop Point	15	48° 20.707' N	115° 57.909' W
Drop Point	2	48° 21.986' N	115° 52.926' W
Drop Point	20	48° 23.472' N	115° 57.466' W
Drop Point	30	48° 20.216' N	115° 54.626' W
Drop Point	31	48° 20.129' N	115° 58.738' W
Drop Point	33	48° 19.930' N	116° 00.127' W
Drop Point	35	48° 20.657' N	116° 01.635' W
Drop Point	4	48° 21.125' N	115° 53.431' W
Drop Point	40	48° 23.689' N	115° 54.364' W
Drop Point	45	48° 22.594' N	115° 54.626' W
Drop Point	5	48° 21.744' N	115° 55.679' W
Drop Point	50	48° 24.938' N	115° 54.761' W
Drop Point	6	48° 22.270' N	115° 56.865' W
Drop Point	7	48° 22.199' N	115° 56.980' W
Drop Point	8	48° 21.977' N	115° 58.080' W
Drop Point	9	48° 21.611' N	115° 58.900' W
Drop Point	DP-152	48° 33.948' N	115° 56.559' W
Helispot	H1	48° 22.157' N	115° 56.915' W
Helispot	H20	48° 20.808' N	115° 54.481' W
Incident Command Post	Burnt Peak ICP	48° 25.728' N	115° 49.185' W
Repeater	A/C Link	48° 19.234' N	115° 53.677' W
Repeater	CHD7	48° 19.214' N	115° 53.669' W
Repeater	CHD8	48° 33.622' N	115° 55.288' W
Unimproved Landing Area			
Water Source		48° 20.195' N	115° 57.660' W
Water Source		48° 20.644' N	115° 54.151' W
Water Source		48° 21.960' N	115° 58.654' W
Water Source		48° 20.866' N	115° 54.626' W
Water Source		48° 19.909' N	115° 50.729' W
Water Source		48° 21.317' N	116° 02.419' W