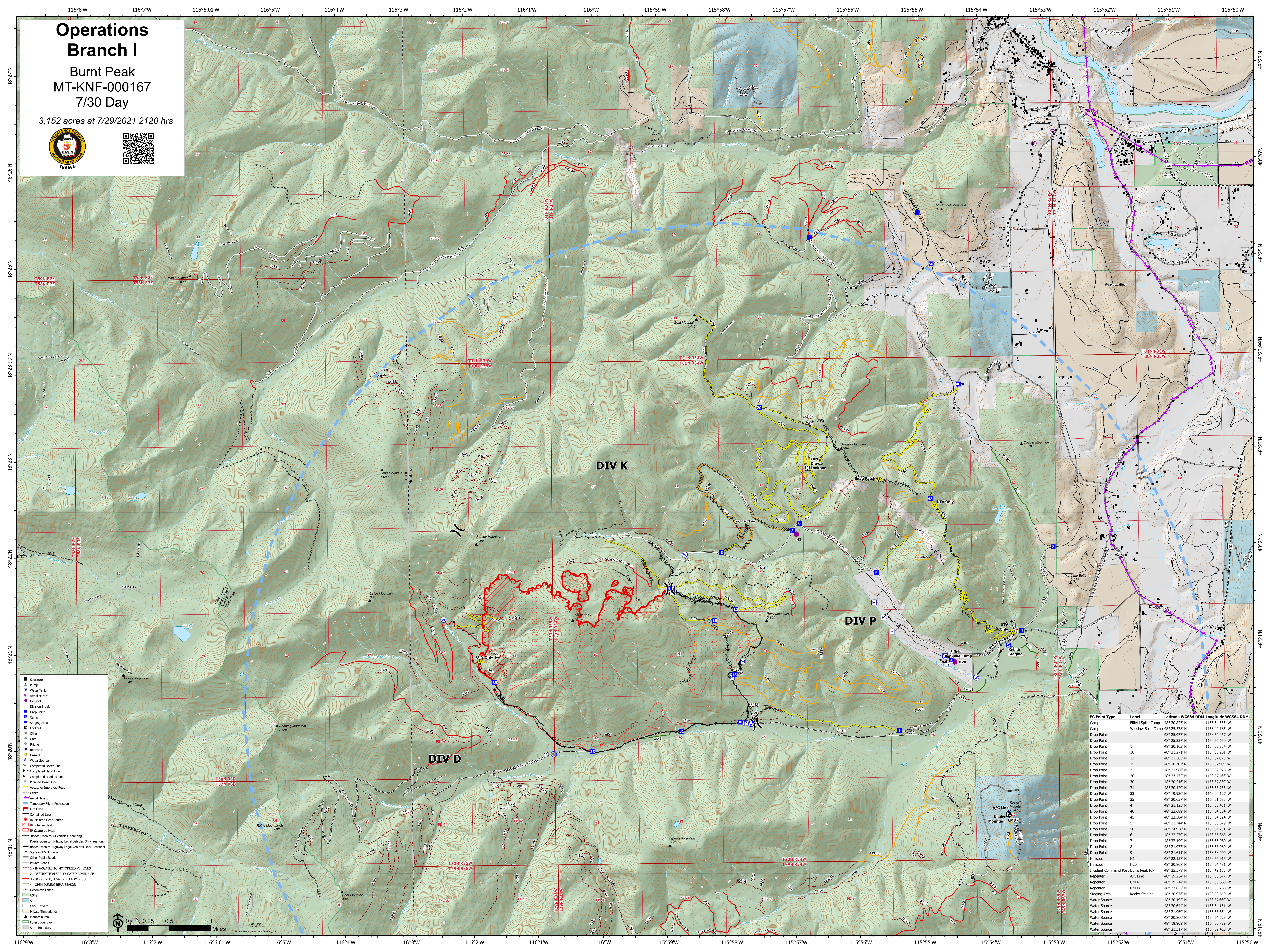


# Operations Branch I

Burnt Peak  
MT-KNF-000167  
7/30 Day

3,152 acres at 7/29/2021 2120 hrs



- Structures
- ⊕ Pump
- ⊕ Water Tank
- ⊕ Aerial Hazard
- ⊕ Helispot
- ⊕ Division Break
- ⊕ Drop Point
- ⊕ Camp
- ⊕ Staging Area
- ⊕ Lookout
- ⊕ Other
- ⊕ Gate
- ⊕ Bridge
- ⊕ Repeater
- ⊕ Hazard
- ⊕ Water Source
- ⊕ Completed Dozer Line
- ⊕ Completed Hand Line
- ⊕ Planned Dozer Line
- ⊕ Access or Improved Road
- ⊕ Other
- ⊕ Aerial Hazard
- ⊕ Temporary Flight Restriction
- ⊕ Fire Edge
- ⊕ Contained Line
- ⊕ IR Isolated Heat Source
- ⊕ IR Intense Heat
- ⊕ IR Scattered Heat
- ⊕ Roads Open to All Vehicles, Yearlong
- ⊕ Roads Open to Highway Legal Vehicles Only, Yearlong
- ⊕ Roads Open to Highway Legal Vehicles Only, Seasonal
- ⊕ State or US Highway
- ⊕ Other Public Roads
- ⊕ Private Roads
- ⊕ Private Timberlands
- ⊕ Mountain Peak
- ⊕ Forest Boundary
- ⊕ State Boundary

FC Point Type	Label	Latitude WGS84 DDM	Longitude WGS84 DDM
Camp	Field Spike Camp	48° 20.823' N	115° 54.535' W
Camp	Winslow Base Camp	48° 25.578' N	115° 49.185' W
Drop Point		48° 25.477' N	115° 54.967' W
Drop Point	1	48° 25.227' N	115° 56.650' W
Drop Point	10	48° 20.103' N	115° 53.568' W
Drop Point	12	48° 21.271' N	115° 58.201' W
Drop Point	15	48° 21.385' N	115° 57.873' W
Drop Point	18	48° 20.707' N	115° 57.909' W
Drop Point	2	48° 21.986' N	115° 52.926' W
Drop Point	20	48° 23.472' N	115° 57.466' W
Drop Point	30	48° 22.504' N	115° 57.830' W
Drop Point	31	48° 20.128' N	115° 58.738' W
Drop Point	33	48° 19.930' N	116° 00.127' W
Drop Point	35	48° 20.657' N	116° 01.635' W
Drop Point	4	48° 21.125' N	115° 53.431' W
Drop Point	40	48° 23.689' N	115° 54.364' W
Drop Point	45	48° 22.504' N	115° 54.204' W
Drop Point	5	48° 21.744' N	115° 55.679' W
Drop Point	50	48° 24.938' N	115° 54.761' W
Drop Point	6	48° 22.270' N	115° 56.865' W
Drop Point	7	48° 22.199' N	115° 56.980' W
Drop Point	8	48° 21.977' N	115° 58.080' W
Drop Point	9	48° 21.611' N	115° 58.900' W
Helispot	H1	48° 22.157' N	115° 56.915' W
Helispot	H20	48° 20.808' N	115° 54.481' W
Incident Command Post	Burnt Peak ICP	48° 25.578' N	115° 49.185' W
Repeater	A/C Link	48° 19.234' N	115° 53.677' W
Repeater	CHD7	48° 19.214' N	115° 53.669' W
Repeater	CHD8	48° 23.622' N	115° 53.588' W
Staging Area	Keeler Staging	48° 20.976' N	115° 53.640' W
Water Source		48° 20.195' N	115° 57.660' W
Water Source		48° 20.644' N	115° 54.151' W
Water Source		48° 21.960' N	115° 56.654' W
Water Source		48° 20.860' N	115° 54.628' W
Water Source		48° 19.809' N	116° 00.790' W
Water Source		48° 21.317' N	116° 02.420' W

