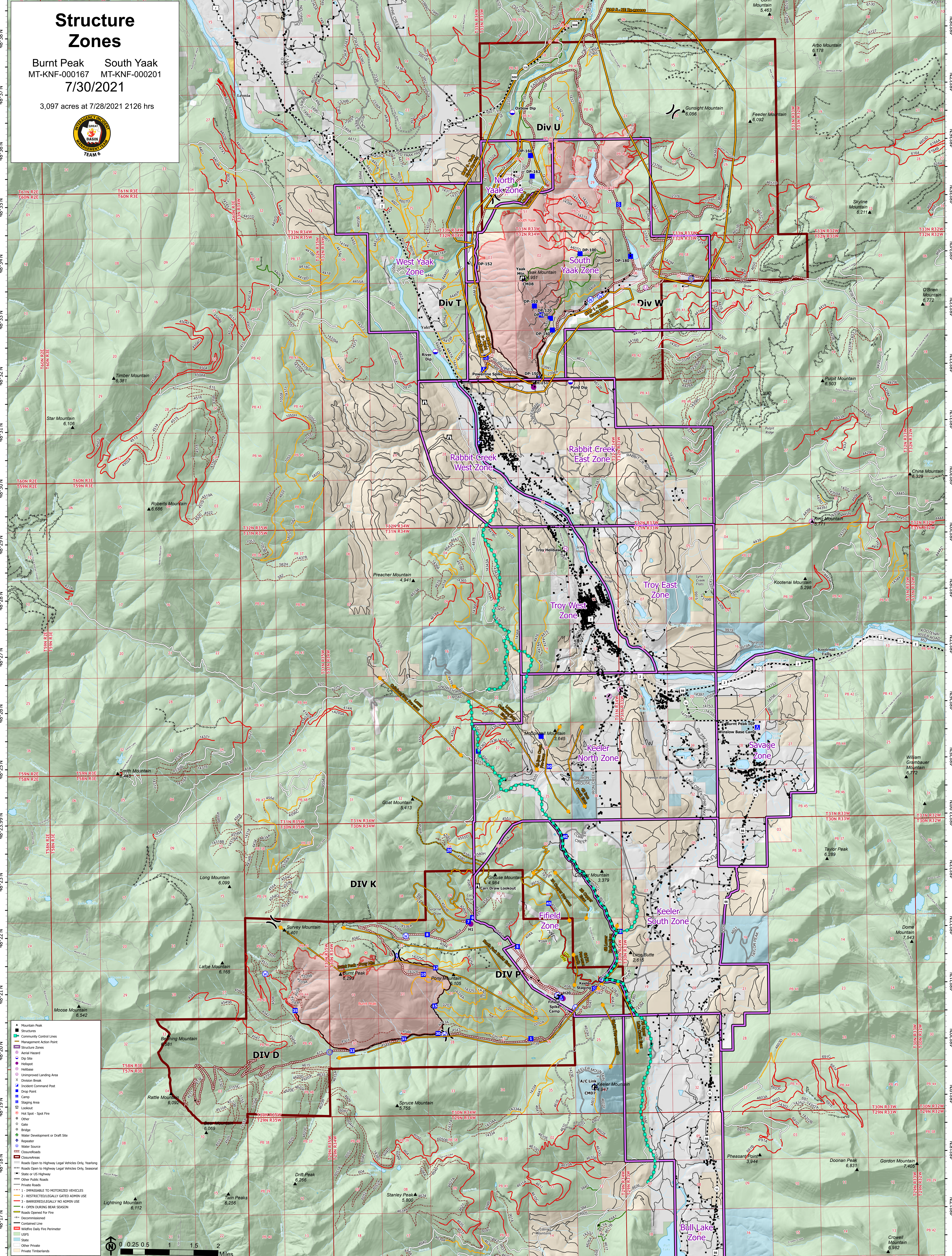


# Structure Zones

Burnt Peak South Yaak  
MT-KNF-000167 MT-KNF-000201  
7/30/2021

3,097 acres at 7/28/2021 2126 hrs



- Mountain Peak
- Community Control Lines
- Management Action Point
- Structure Zone
- Area Hazard
- Dip Site
- Helispot
- Unimproved Landing Area
- Division Break
- Incident Command Post
- Drop Point
- Camp
- Staging Area
- Lookout
- Hot Spot - Spot Fire
- Other
- Gate
- Bridge
- Water Development or Draft Site
- Repeater
- Water Source
- Closure/Roads
- Closure/Access
- Roads Open to Highway Legal Vehicles Only, Yearlong
- Roads Open to Highway Legal Vehicles Only, Seasonal
- State or US Highway
- Other Public Roads
- Private Roads
- 1 - IMPROVED TO MOTORIZED VEHICLES
- 2 - RESTRICTED/LEGALLY GATED ADMIN USE
- 3 - BARRIERED/LEGALLY NO ADMIN USE
- 4 - OPEN DURING BEAR SEASON
- Roads Opened for Fire
- Decommissioned
- Contained Line
- Wildfire Daily Fire Perimeter
- USFS
- State
- Other Private
- Private Timberlands

0 0.25 0.5 1 1.5 2 Miles