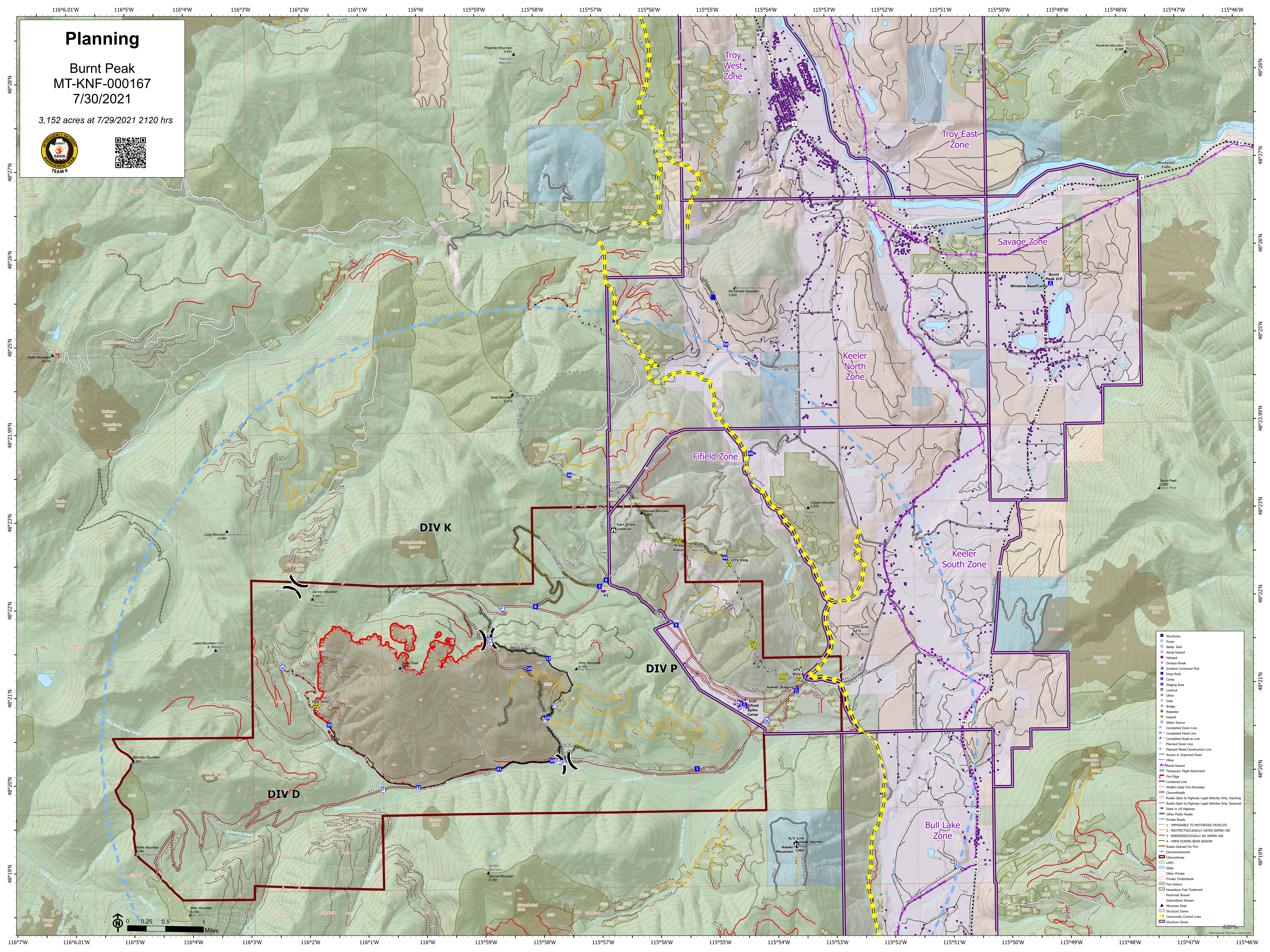


Planning

Burnt Peak
MT-KNF-000167
7/30/2021

3,152 acres at 7/29/2021 2120 hrs



■	Structures
■	Pump
■	Water Tank
■	Aerial Hazard
●	Hotspot
X	Division Break
■	Incident Command Post
■	Staging Area
■	Camp
■	Staging Area
○	Lookout
○	Gate
○	Bridge
○	Repeater
○	Water Source
○	Completed Dozer Line
○	Completed Hand Line
○	Completed Road as Line
○	Planned Dozer Line
○	Planned Mixed Construction Line
○	Access or Improved Road
○	Wildfire Daily Fire Perimeter
○	ClosureRoads
○	Roads Open to Highway Legal Vehicles Only, Yearlong
○	Roads Open to Highway Legal Vehicles Only, Seasonal
○	State or US Highway
○	Other Public Roads
○	Private Roads
○	1 - IMPASSABLE TO HISTORIC VEHICLES
○	2 - RESTRICTED/LEGALLY GATED ADMIN USE
○	3 - BARRIER/LEGALLY NO ADMIN USE
○	4 - OPEN DURING BEAR SEASON
○	Roads Closed for Fire
○	Decommissioned
○	ClosureAreas
○	USFS
○	State
○	Other Private
○	Private Timberlands
○	Fire History
○	Hazardous Fuel Treatment
○	Perennial Stream
○	Intermittent Stream
○	Mountain Peak
○	Structure Peak
○	Community Control Lines
○	Structure Zones
○	Structure Zones

