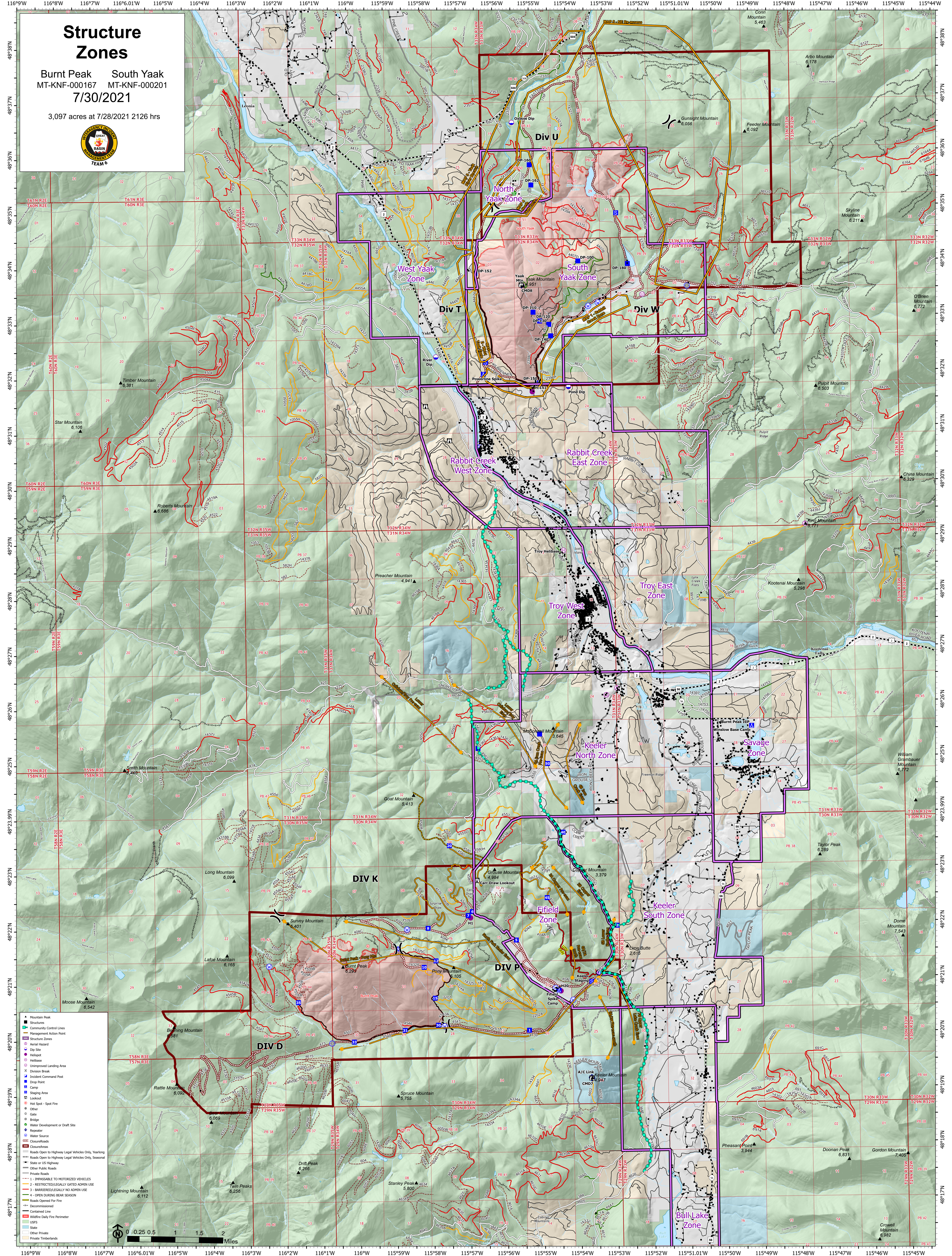


Structure Zones

Burnt Peak South Yaak
MT-KNF-000167 MT-KNF-000201
7/30/2021

3,097 acres at 7/28/2021 2126 hrs



48°38'N
48°37'N
48°36'N
48°35'N
48°34'N
48°33'N
48°32'N
48°31'N
48°30'N
48°29'N
48°28'N
48°27'N
48°26'N
48°25'N
48°24'N
48°23'N
48°22'N
48°21'N
48°20'N
48°19'N
48°18'N
48°17'N

115°44'W
115°43'W
115°42'W
115°41'W
115°40'W
115°39'W
115°38'W
115°37'W
115°36'W
115°35'W
115°34'W
115°33'W
115°32'W
115°31'W
115°30'W
115°29'W
115°28'W
115°27'W
115°26'W
115°25'W
115°24'W
115°23'W
115°22'W
115°21'W
115°20'W
115°19'W
115°18'W
115°17'W

116°9'W 116°8'W 116°7'W 116°6.01'W 116°5'W 116°4'W 116°3'W 116°2'W 116°1'W 116°W 115°59'W 115°58'W 115°57'W 115°56'W 115°55'W 115°54'W 115°53'W 115°52'W 115°51.01'W 115°50'W 115°49'W 115°48'W 115°47'W 115°46'W 115°45'W

- Mountain Peak
- Community Control Lines
- Management Action Point
- Structure Zones
- Aerial Hazard
- Dip Site
- Helispot
- Helibase
- Unimproved Landing Area
- Division Break
- Incident Command Post
- Drop Point
- Camp
- Staging Area
- Lookout
- Hot Spot - Spot Fire
- Other
- Cable
- Bridge
- Water Development or Draft Site
- Repeater
- Water Source
- Closure/Roads
- Closure/Access
- Roads Open to Highway Legal Vehicles Only, Yearlong
- Roads Open to Highway Legal Vehicles Only, Seasonal
- State or US Highway
- Other Public Roads
- Private Roads
- 1 - IMPROVED TO MOTORIZED VEHICLES
- 2 - RESTRICTED/LEGALLY GATED ADMIN USE
- 3 - BARRIERED/LEGALLY NO ADMIN USE
- 4 - OPEN DURING BEAR SEASON
- Roads Opened for Fire
- Decommissioned
- Contained Line
- Wildfire Daily Fire Perimeter
- USFS
- State
- Other Private
- Private Timberlands

