

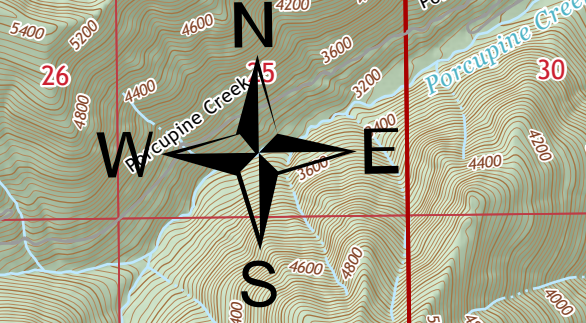
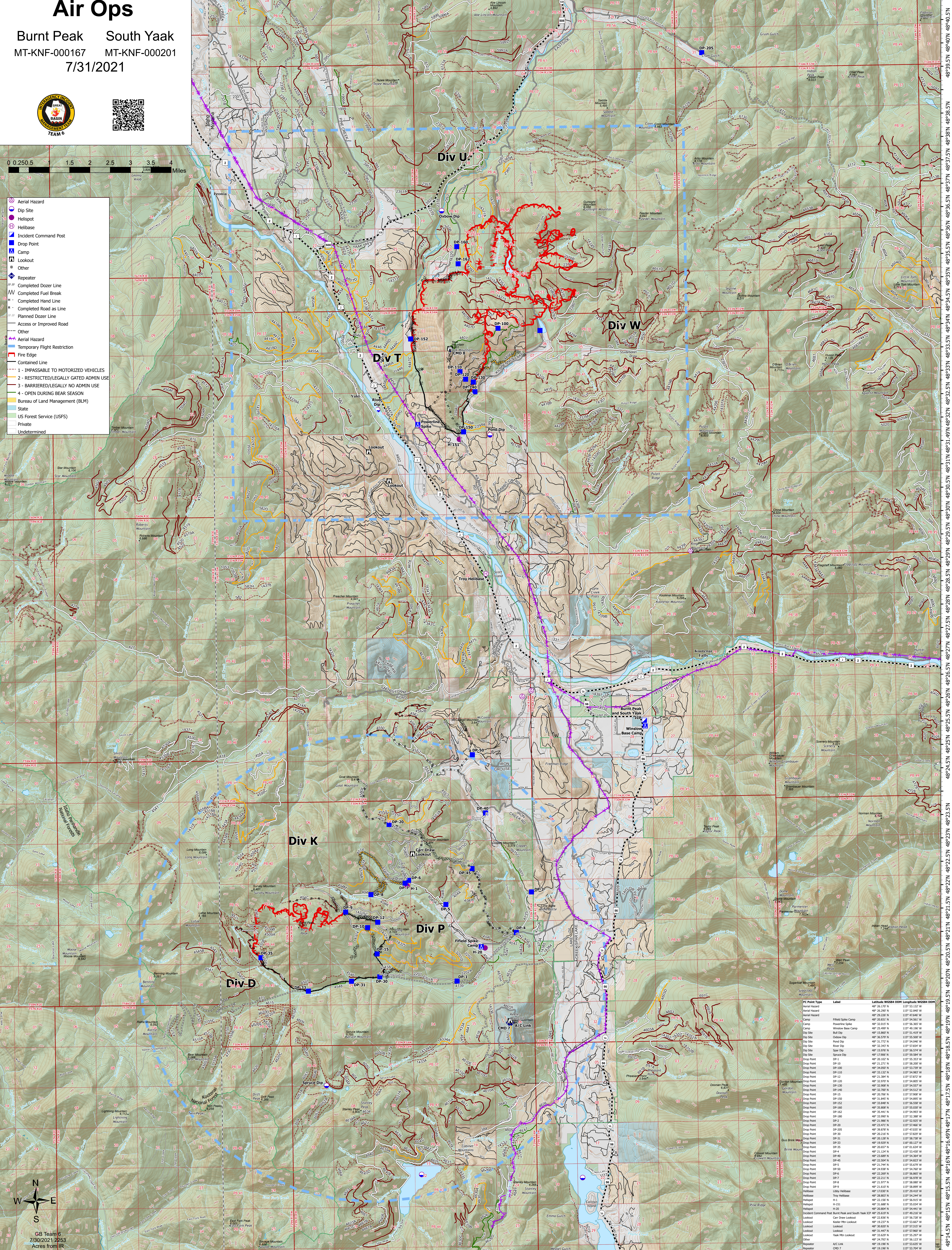
116°9.5'W 116°8.5'W 116°7.5'W 116°6.5'W 116°5.5'W 116°4.5'W 116°3.5'W 116°2.5'W 116°1.5'W 116°0.5'W 115°59.5'W 115°58.5'W 115°57.5'W 115°56.5'W 115°55.5'W 115°54.5'W 115°53.5'W 115°52.5'W 115°51.5'W 115°50.5'W 115°49.5'W 115°48.5'W 115°47.5'W 115°46.5'W 115°45.5'W 115°44.5'W 115°43.5'W 115°42.5'W 115°41.5'W 115°40.5'W 115°39.5'W

Air Ops

Burnt Peak South Yaak
MT-KNF-000167 MT-KNF-000201
7/31/2021



- Aerial Hazard
- Dip Site
- Helispot
- Helibase
- Incident Command Post
- Drop Point
- Camp
- Lookout
- Other
- Repeater
- Completed Dozer Line
- Completed Fuel Break
- Completed Hand Line
- Completed Road as Line
- Planned Dozer Line
- Access or Improved Road
- Other
- Aerial Hazard
- Temporary Flight Restriction
- Fire Edge
- Contained Line
- 1 - IMPASSABLE TO MOTORIZED VEHICLES
- 2 - RESTRICTED/LEGALLY GATED ADMIN USE
- 3 - BARRIRED/LEGALLY NO ADMIN USE
- 4 - OPEN DURING BEAR SEASON
- Bureau of Land Management (BLM)
- State
- US Forest Service (USFS)
- Private
- Undetermined



GS Team 6
7/30/2021 2P53
Acres from ITR
North American 1983 Datum, Lat/Long

FC Point Type	Label	Latitude WGS84 DDM	Longitude WGS84 DDM
Aerial Hazard		48° 26.107' N	115° 53.137' W
Aerial Hazard		48° 26.226' N	115° 47.640' W
Aerial Hazard		48° 26.833' N	115° 54.620' W
Aerial Hazard		48° 23.015' N	115° 56.360' W
Camp	Finfield Spike Camp	48° 25.499' N	115° 49.150' W
Camp	Winslow Base Camp	48° 25.499' N	115° 49.150' W
Dip Site	Butte Dip	48° 36.579' N	115° 55.500' W
Dip Site	Odow Dip	48° 31.772' N	115° 54.960' W
Dip Site	Rock Dip	48° 24.807' N	115° 52.070' W
Dip Site	Spur Dip	48° 15.978' N	115° 56.574' W
Dip Site	Spur Dip	48° 23.060' N	115° 54.800' W
Drop Point	DP-1	48° 20.102' N	115° 55.337' W
Drop Point	DP-10	48° 21.271' N	115° 58.200' W
Drop Point	DP-100	48° 16.000' N	115° 53.770' W
Drop Point	DP-110	48° 31.132' N	115° 54.867' W
Drop Point	DP-12	48° 21.289' N	115° 52.070' W
Drop Point	DP-120	48° 32.970' N	115° 54.800' W
Drop Point	DP-130	48° 32.908' N	115° 54.907' W
Drop Point	DP-140	48° 20.706' N	115° 57.908' W
Drop Point	DP-150	48° 31.840' N	115° 54.800' W
Drop Point	DP-160	48° 33.808' N	115° 55.000' W
Drop Point	DP-160	48° 33.808' N	115° 55.000' W
Drop Point	DP-180	48° 22.441' N	115° 54.900' W
Drop Point	DP-180	48° 33.900' N	115° 52.388' W
Drop Point	DP-2	48° 21.980' N	115° 52.800' W
Drop Point	DP-30	48° 24.477' N	115° 52.600' W
Drop Point	DP-305	48° 26.878' N	115° 47.000' W
Drop Point	DP-35	48° 23.100' N	115° 52.070' W
Drop Point	DP-31	48° 20.128' N	115° 56.730' W
Drop Point	DP-33	48° 19.929' N	115° 50.127' W
Drop Point	DP-40	48° 21.271' N	115° 58.200' W
Drop Point	DP-45	48° 21.877' N	115° 54.900' W
Drop Point	DP-5	48° 21.744' N	115° 56.877' W
Drop Point	DP-6	48° 22.269' N	115° 56.800' W
Drop Point	DP-7	48° 22.211' N	115° 56.900' W
Drop Point	DP-8	48° 21.877' N	115° 54.900' W
Drop Point	DP-9	48° 21.610' N	115° 58.800' W
Helibase	L300 Helibase	48° 21.038' N	115° 52.070' W
Helibase	Troy Helibase	48° 28.803' N	115° 54.247' W
Helispot	H-1	48° 22.150' N	115° 56.900' W
Helispot	H-11	48° 22.150' N	115° 56.900' W
Helispot	H-20	48° 20.804' N	115° 54.441' W
Incident Command Post	Burnt Peak and South Yaak ICP	48° 25.610' N	115° 49.200' W
Lookout	Carri Draw Lookout	48° 25.200' N	115° 56.200' W
Lookout	Kuaka Mtn Lookout	48° 19.137' N	115° 53.607' W
Lookout	Lookout	48° 28.800' N	115° 52.370' W
Lookout	Lookout	48° 31.447' N	115° 57.960' W
Lookout	Yaak Mtn Lookout	48° 33.629' N	115° 52.207' W
Repeater	CH07	48° 18.190' N	115° 53.800' W
Repeater	A/C Link	48° 18.190' N	115° 53.800' W
Repeater	CH08	48° 33.622' N	115° 55.287' W