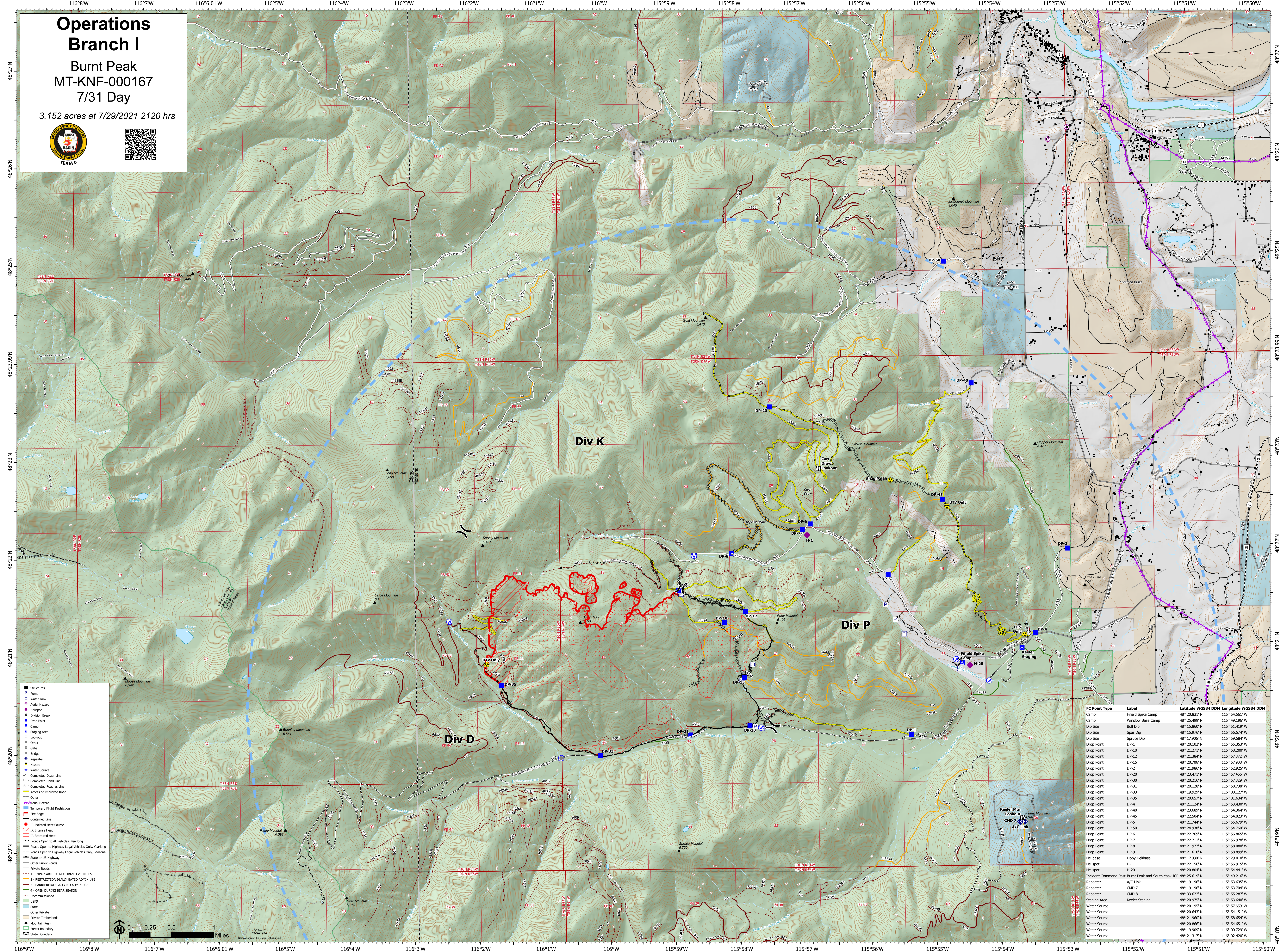


Operations Branch I

Burnt Peak
MT-KNF-000167
7/31 Day

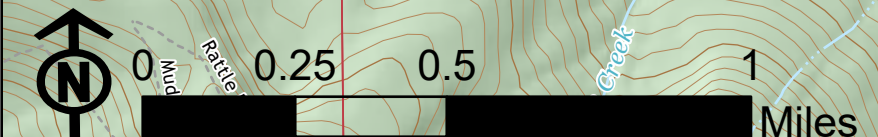
3,152 acres at 7/29/2021 2120 hrs



Legend

- Structures
- Pump
- Water Tank
- Aerial Hazard
- Helispot
- Division Break
- Drop Point
- Camp
- Staging Area
- Lookout
- Gate
- Bridge
- Repeater
- Hazard
- Water Source
- Completed Dozer Line
- H - Completed Head Line
- R - Completed Road as Line
- Access or Improved Road
- Other
- Material Hazard
- Temporary Flight Restriction
- Fire Edge
- Contained Line
- IR Isolated Heat Source
- IR Intense Heat
- IR Scattered Heat
- Roads Open to All Vehicles, Yearlong
- Roads Open to Highway Legal Vehicles Only, Yearlong
- Roads Open to Highway Legal Vehicles Only, Seasonal
- State or US Highway
- Other Public Roads
- Private Roads
- 1 - IMPASSIBLE TO MOTORIZED VEHICLES
- 2 - RESTRICTED/LEGALLY GATED ADMIN USE
- 3 - BARRIERED/LEGALLY NO ADMIN USE
- 4 - OPEN DURING BEAR SEASON
- Decommissioned
- USFS
- State
- Other Private
- Private Timberlands
- Mountain Peak
- Forest Boundary
- State Boundary

Drop Point Type	Label	Latitude WGS84 DDM	Longitude WGS84 DDM
Camp	Fifield Spike Camp	48° 20.831' N	115° 54.561' W
Camp	Winslow Base Camp	48° 25.499' N	115° 49.196' W
Dip Site	Bull Dip	48° 15.860' N	115° 51.419' W
Dip Site	Spur Dip	48° 15.976' N	115° 56.574' W
Dip Site	Spruce Dip	48° 17.906' N	115° 59.584' W
Drop Point	DP-1	48° 20.102' N	115° 55.353' W
Drop Point	DP-10	48° 21.271' N	115° 58.200' W
Drop Point	DP-12	48° 21.384' N	115° 57.872' W
Drop Point	DP-15	48° 20.706' N	115° 57.908' W
Drop Point	DP-2	48° 21.966' N	115° 52.325' W
Drop Point	DP-20	48° 23.471' N	115° 57.466' W
Drop Point	DP-30	48° 20.216' N	115° 57.829' W
Drop Point	DP-31	48° 20.128' N	115° 58.738' W
Drop Point	DP-33	48° 19.929' N	116° 00.127' W
Drop Point	DP-35	48° 20.657' N	116° 01.634' W
Drop Point	DP-4	48° 21.124' N	115° 53.430' W
Drop Point	DP-40	48° 23.689' N	115° 54.544' W
Drop Point	DP-45	48° 22.504' N	115° 54.823' W
Drop Point	DP-5	48° 21.744' N	115° 55.679' W
Drop Point	DP-50	48° 24.938' N	115° 54.760' W
Drop Point	DP-6	48° 22.269' N	115° 56.865' W
Drop Point	DP-7	48° 22.211' N	115° 56.978' W
Drop Point	DP-8	48° 23.197' N	115° 58.980' W
Drop Point	DP-9	48° 21.610' N	115° 58.999' W
Helibase	Libby Helibase	48° 17.030' N	115° 29.410' W
Helispot	H-1	48° 22.156' N	115° 56.915' W
Helispot	H-20	48° 20.804' N	115° 54.441' W
Incident Command Post	Burnt Peak and South Yaak ICP	48° 25.619' N	115° 49.216' W
Repeater	A/C Link	48° 19.196' N	115° 53.635' W
Repeater	CMO 7	48° 19.196' N	115° 53.704' W
Repeater	CMO 8	48° 33.622' N	115° 55.287' W
Staging Area	Keeler Staging	48° 20.975' N	115° 53.640' W
Water Source	Keeler Staging	48° 20.195' N	115° 57.659' W
Water Source	Keeler Staging	48° 20.643' N	115° 54.151' W
Water Source	Keeler Staging	48° 21.960' N	115° 58.654' W
Water Source	Keeler Staging	48° 20.866' N	115° 54.851' W
Water Source	Keeler Staging	48° 19.909' N	116° 00.729' W
Water Source	Keeler Staging	48° 21.317' N	116° 02.420' W



116°9'W 116°8'W 116°7'W 116°6'01'W 116°5'W 116°4'W 116°3'W 116°2'W 116°1'W 116°W 115°59'W 115°58'W 115°57'W 115°56'W 115°55'W 115°54'W 115°53'W 115°52'W 115°51'W 115°50'W

48°27'N 48°26'N 48°25'N 48°23'99'N 48°23'N 48°22'N 48°21'N 48°20'N 48°19'N 48°18'N