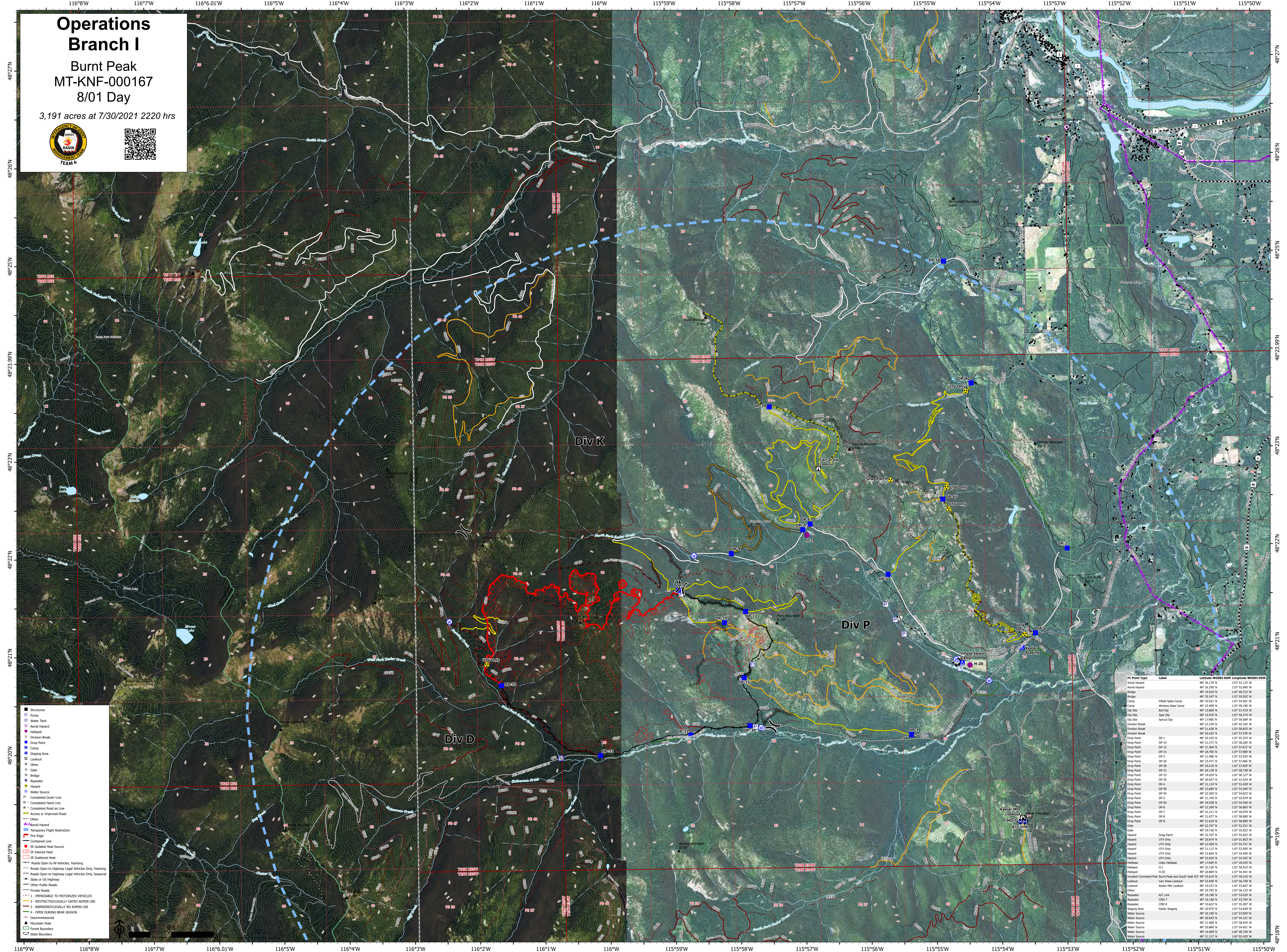


Operations Branch I

Burnt Peak
MT-KNF-000167
8/01 Day

3,191 acres at 7/30/2021 2220 hrs



- Structures
- ⊕ Pump
- ⊕ Water Tank
- ⊕ Aerial Hazard
- ⊕ Helicopter
- ⊕ Division Break
- ⊕ Drop Point
- ⊕ Camp
- ⊕ Staging Area
- ⊕ Lockdown
- ⊕ Other
- ⊕ Gate
- ⊕ Bridge
- ⊕ Repeater
- ⊕ Hazard
- ⊕ Water Source
- ⊕ Completed Door Line
- ⊕ Completed Hand Line
- ⊕ Completed Road as Line
- ⊕ Access or Improved Road
- ⊕ Other
- ⊕ Aerial Hazard
- ⊕ Temporary Flight Restriction
- ⊕ Fire Edge
- ⊕ Contained Line
- ⊕ IR Isolated Heat Source
- ⊕ IR Intense Heat
- ⊕ IR Scattered Heat
- ⊕ Roads Open to All Vehicles, Yearlong
- ⊕ Roads Open to Highway Legal Vehicles Only, Yearlong
- ⊕ Roads Open to Highway Legal Vehicles Only, Seasonal
- ⊕ State or US Highway
- ⊕ Other Public Roads
- ⊕ Private Roads
- ⊕ 1 - IMPASSABLE TO MOTORIZED VEHICLES
- ⊕ 2 - RESTRICTED/LEGALLY GATED ADMIN USE
- ⊕ 3 - BARRIERS/LEGALLY NO ADMIN USE
- ⊕ 4 - OPEN DURING BEAR SEASON
- ⊕ Decommissioned
- ⊕ Mountain Peak
- ⊕ Forest Boundary
- ⊕ State Boundary

FC Point Type	Label	Latitude WGS84 DDM	Longitude WGS84 DDM
Aerial Hazard		48° 26.170' N	115° 53.322' W
Aerial Hazard		48° 19.910' N	115° 52.840' W
Bridge		48° 35.347' N	115° 55.022' W
Camp	Field Spike Camp	48° 20.831' N	115° 54.561' W
Camp	Window Base Camp	48° 25.699' N	115° 49.190' W
Drop Site	Ball Dip	48° 22.239' N	115° 52.978' W
Drop Site	Spear Dip	48° 15.976' N	115° 56.574' W
Drop Site	Source Dip	48° 17.906' N	115° 59.584' W
Division Break		48° 22.239' N	115° 52.978' W
Division Break		48° 21.638' N	115° 58.863' W
Division Break		48° 20.202' N	115° 57.476' W
Drop Point	DP-1	48° 21.271' N	115° 58.200' W
Drop Point	DP-10	48° 21.384' N	115° 57.822' W
Drop Point	DP-12	48° 20.700' N	115° 57.908' W
Drop Point	DP-2	48° 21.868' N	115° 52.825' W
Drop Point	DP-20	48° 23.472' N	115° 57.460' W
Drop Point	DP-30	48° 20.248' N	115° 57.460' W
Drop Point	DP-31	48° 20.128' N	115° 58.738' W
Drop Point	DP-33	48° 19.820' N	115° 60.377' W
Drop Point	DP-35	48° 20.607' N	115° 01.654' W
Drop Point	DP-4	48° 21.244' N	115° 53.430' W
Drop Point	DP-40	48° 22.899' N	115° 56.882' W
Drop Point	DP-45	48° 22.594' N	115° 54.822' W
Drop Point	DP-5	48° 21.744' N	115° 56.679' W
Drop Point	DP-6	48° 24.388' N	115° 56.882' W
Drop Point	DP-6	48° 22.269' N	115° 56.865' W
Drop Point	DP-7	48° 22.211' N	115° 56.978' W
Drop Point	DP-8	48° 21.077' N	115° 56.882' W
Drop Point	DP-9	48° 21.610' N	115° 58.899' W
Gate		48° 22.707' N	115° 52.531' W
Hazard		48° 24.736' N	115° 55.622' W
Hazard	Snag Patch	48° 22.707' N	115° 55.622' W
Hazard	UTV Only	48° 20.244' N	115° 01.852' W
Hazard	UTV Only	48° 22.044' N	115° 54.711' W
Hazard	UTV Only	48° 21.112' N	115° 53.595' W
Hazard	UTV Only	48° 23.604' N	115° 54.402' W
Hazard	UTV Only	48° 22.622' N	115° 56.882' W
Hellbase	Libby Hellbase	48° 17.859' N	115° 29.425' W
Hotspot	N-1	48° 22.550' N	115° 56.882' W
Hotspot	N-20	48° 20.804' N	115° 54.441' W
Incident Command Post	Burnt Peak and South Peak CP	48° 25.619' N	115° 49.216' W
Lockdown	Corr Creek Lockdown	48° 22.580' N	115° 53.822' W
Lockdown	Keller Mtn Lockdown	48° 19.237' N	115° 53.667' W
Other		48° 24.793' N	115° 56.122' W
Repeater	A/C Link	48° 19.196' N	115° 53.822' W
Repeater	CHD 7	48° 19.196' N	115° 53.704' W
Repeater	CHD 8	48° 33.622' N	115° 55.287' W
Staging Area	Keller Staging	48° 20.195' N	115° 57.699' W
Water Source		48° 20.647' N	115° 54.511' W
Water Source		48° 21.560' N	115° 56.882' W
Water Source		48° 20.866' N	115° 54.651' W
Water Source		48° 19.569' N	115° 00.752' W
Water Source		48° 21.317' N	115° 02.402' W

116°9'W 116°8'W 116°7'W 116°6'01'W 116°5'W 116°4'W 116°3'W 116°2'W 116°1'W 116°W 115°59'W 115°58'W 115°57'W 115°56'W 115°55'W 115°54'W 115°53'W 115°52'W 115°51'W 115°50'W