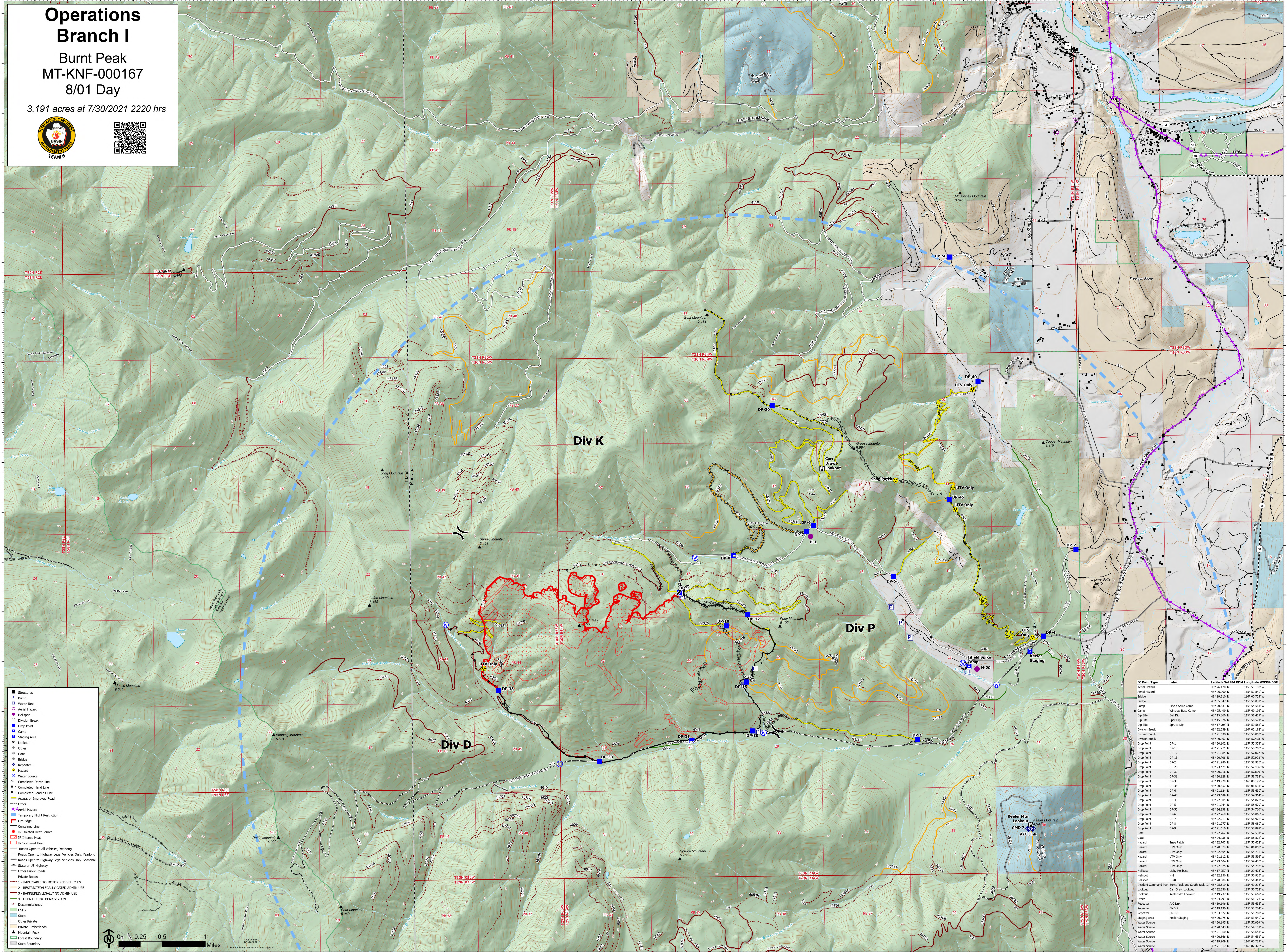


Operations Branch I

Burnt Peak
MT-KNF-000167
8/01 Day

3,191 acres at 7/30/2021 2220 hrs



- Structures
- ⊕ Pump
- ⊕ Water Tank
- ⊕ Aerial Hazard
- ⊕ Helipad
- ⊕ Division Break
- ⊕ Drop Point
- ⊕ Camp
- ⊕ Staging Area
- ⊕ Lookout
- ⊕ Other
- ⊕ Gate
- ⊕ Bridge
- ⊕ Repetitor
- ⊕ Hazard
- ⊕ Water Source
- ⊕ Completed Dozer Line
- ⊕ IR Isolated Heat Source
- ⊕ IR Intense Heat
- ⊕ IR Scattered Heat
- ⊕ Roads Open to All Vehicles, Yearlong
- ⊕ Roads Open to Highway Legal Vehicles Only, Yearlong
- ⊕ Roads Open to Highway Legal Vehicles Only, Seasonal
- ⊕ State or US Highway
- ⊕ Other Public Roads
- ⊕ Private Roads
- ⊕ 1 - IMPASSABLE TO MOTORIZED VEHICLES
- ⊕ 2 - RESTRICTED/LEGALLY GATED ADMIN USE
- ⊕ 3 - BARRIERED/LEGALLY NO ADMIN USE
- ⊕ 4 - OPEN DURING BEAR SEASON
- ⊕ Decommissioned
- ⊕ LIGFS
- ⊕ State
- ⊕ Other Private
- ⊕ Private Timberlands
- ⊕ Mountain Peak
- ⊕ Forest Boundary
- ⊕ State Boundary

FC Point Type	Label	Latitude WGS84 DDM	Longitude WGS84 DDM
Aerial Hazard		48° 26.170' N	115° 51.312' W
Bridge		48° 19.910' N	115° 00.713' W
Camp	Window Base Camp	48° 20.811' N	115° 54.561' W
Drop Point		48° 25.499' N	115° 49.100' W
Drop Point		48° 15.860' N	115° 51.007' W
Drop Point		48° 15.976' N	115° 56.574' W
Drop Point		48° 17.906' N	115° 59.594' W
Drop Point		48° 22.239' N	115° 02.200' W
Drop Point		48° 21.636' N	115° 58.851' W
Drop Point		48° 20.202' N	115° 57.476' W
Drop Point	DP-1	48° 21.217' N	115° 58.200' W
Drop Point	DP-10	48° 21.386' N	115° 57.827' W
Drop Point	DP-12	48° 20.700' N	115° 57.907' W
Drop Point	DP-2	48° 21.986' N	115° 52.825' W
Drop Point	DP-20	48° 23.472' N	115° 57.468' W
Drop Point	DP-20	48° 20.246' N	115° 57.926' W
Drop Point	DP-31	48° 20.128' N	115° 58.738' W
Drop Point	DP-33	48° 19.820' N	115° 03.237' W
Drop Point	DP-35	48° 20.607' N	115° 01.634' W
Drop Point	DP-4	48° 21.244' N	115° 53.430' W
Drop Point	DP-40	48° 23.089' N	115° 56.348' W
Drop Point	DP-45	48° 22.504' N	115° 54.823' W
Drop Point	DP-5	48° 21.744' N	115° 56.676' W
Drop Point	DP-6	48° 22.269' N	115° 56.865' W
Drop Point	DP-7	48° 22.211' N	115° 56.978' W
Drop Point	DP-8	48° 21.077' N	115° 58.899' W
Drop Point	DP-9	48° 21.610' N	115° 58.899' W
Gate		48° 22.767' N	115° 52.531' W
Hazard	Snag Patch	48° 22.707' N	115° 55.622' W
Hazard	UTV Only	48° 20.814' N	115° 01.851' W
Hazard	UTV Only	48° 22.004' N	115° 54.711' W
Hazard	UTV Only	48° 21.112' N	115° 53.595' W
Hazard	UTV Only	48° 23.608' N	115° 56.460' W
Hazard	UTV Only	48° 22.628' N	115° 56.348' W
Helibase	Libby Helibase	48° 17.859' N	115° 28.425' W
Helipad	H-1	48° 22.550' N	115° 56.816' W
Helipad	H-20	48° 20.804' N	115° 54.941' W
Incident Command Post	Burnt Peak and South Peak ICP	48° 25.619' N	115° 49.216' W
Lookout	Keeler Mtn Lookout	48° 22.886' N	115° 53.827' W
Lookout	Keeler Mtn Lookout	48° 19.237' N	115° 53.667' W
Other		48° 24.793' N	115° 56.123' W
Repetitor	A/C Link	48° 20.978' N	115° 53.807' W
Repetitor	CHD 7	48° 19.196' N	115° 53.704' W
Repetitor	CHD 7	48° 33.622' N	115° 55.287' W
Staging Area	Keeler Staging	48° 20.195' N	115° 57.699' W
Water Source		48° 20.647' N	115° 54.151' W
Water Source		48° 21.860' N	115° 56.541' W
Water Source		48° 20.866' N	115° 54.651' W
Water Source		48° 19.969' N	115° 00.752' W
Water Source		48° 21.317' N	115° 04.207' W

