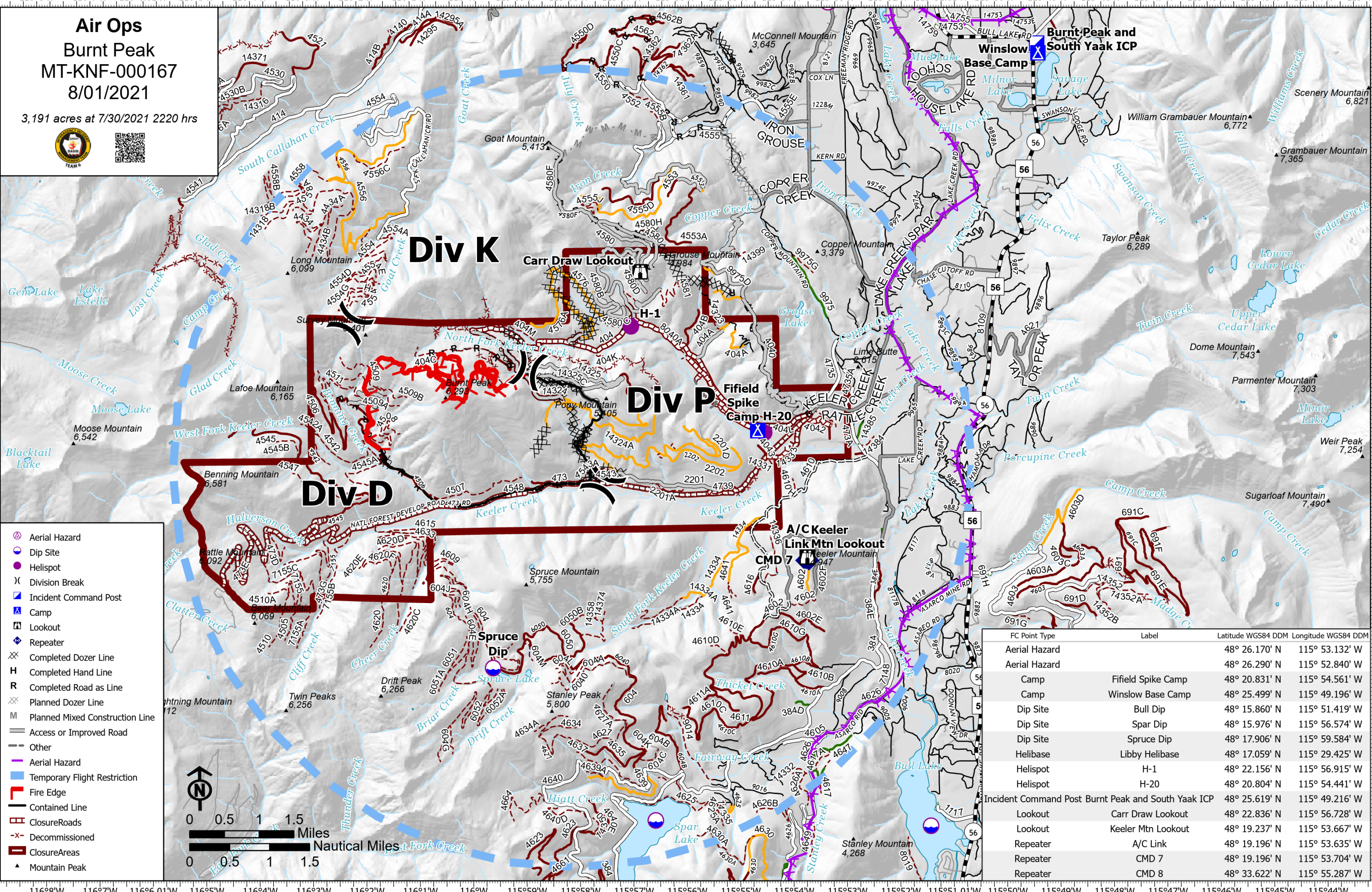
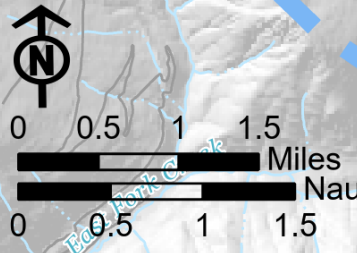


**Air Ops**  
**Burnt Peak**  
**MT-KNF-000167**  
**8/01/2021**

3,191 acres at 7/30/2021 2220 hrs



- ⊕ Aerial Hazard
- ⊕ Dip Site
- Helispot
- ⌘ Division Break
- ⊠ Incident Command Post
- ⊠ Camp
- ⊠ Lookout
- ⊠ Repeater
- ⊠ Completed Dozer Line
- H Completed Hand Line
- R Completed Road as Line
- ⊠ Planned Dozer Line
- M Planned Mixed Construction Line
- Access or Improved Road
- Other
- ⊠ Aerial Hazard
- ⊠ Temporary Flight Restriction
- ⊠ Fire Edge
- ⊠ Contained Line
- ⊠ ClosureRoads
- ⊠ Decommissioned
- ⊠ ClosureAreas
- ▲ Mountain Peak



FC Point Type	Label	Latitude WGS84 DDM	Longitude WGS84 DDM
Aerial Hazard		48° 26.170' N	115° 53.132' W
Aerial Hazard		48° 26.290' N	115° 52.840' W
Camp	Fifield Spike Camp	48° 20.831' N	115° 54.561' W
Camp	Winslow Base Camp	48° 25.499' N	115° 49.196' W
Dip Site	Bull Dip	48° 15.860' N	115° 51.419' W
Dip Site	Spar Dip	48° 15.976' N	115° 56.574' W
Dip Site	Spruce Dip	48° 17.906' N	115° 59.584' W
Helibase	Libby Helibase	48° 17.059' N	115° 29.425' W
Helispot	H-1	48° 22.156' N	115° 56.915' W
Helispot	H-20	48° 20.804' N	115° 54.441' W
Incident Command Post	Burnt Peak and South Yaak ICP	48° 25.619' N	115° 49.216' W
Lookout	Carr Draw Lookout	48° 22.836' N	115° 56.728' W
Lookout	Keeler Mtn Lookout	48° 19.237' N	115° 53.667' W
Repeater	A/C Link	48° 19.196' N	115° 53.635' W
Repeater	CMD 7	48° 19.196' N	115° 53.704' W
Repeater	CMD 8	48° 33.622' N	115° 55.287' W