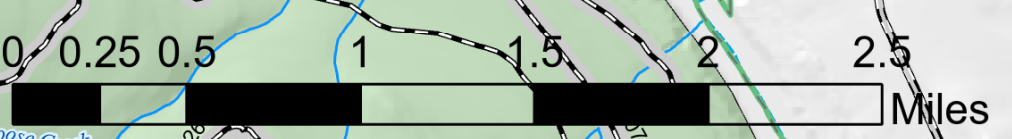


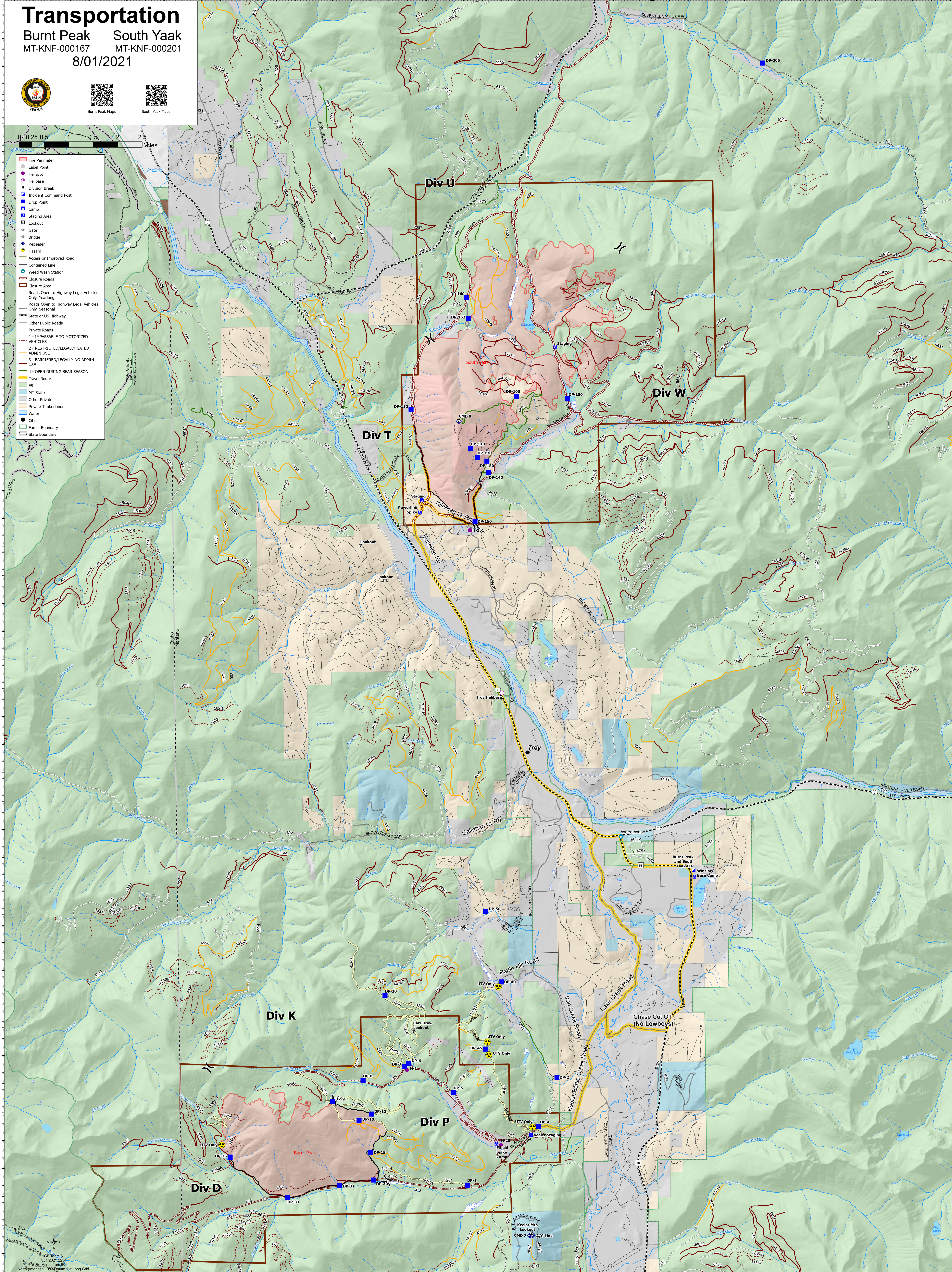
# Transportation

Burnt Peak South Yaak  
MT-KNF-000167 MT-KNF-000201  
8/01/2021



- Fire Perimeter
- Label Point
- Helispot
- Helibase
- Division Break
- Incident Command Post
- Drop Point
- Camp
- Staging Area
- Lookout
- Gate
- Repeater
- Hazard
- Access or Improved Road
- Contained Line
- Weed Wash Station
- Closure Roads
- Closure Area
- Roads Open to Highway Legal Vehicles Only, Yearlong
- Roads Open to Highway Legal Vehicles Only, Seasonal
- State or US Highway
- Other Public Roads
- Private Roads
- 1 - IMPASSABLE TO MOTORIZED VEHICLES
- 2 - RESTRICTED/LEGALLY GATED ADMIN USE
- 3 - BARRIERED/LEGALLY NO ADMIN
- 4 - OPEN DURING BEAR SEASON
- Travel Route
- FS
- MT State
- Other Private
- Private Timberlands
- Water
- Cities
- Forest Boundary
- State Boundary

CR Team 6  
7/31/2021 2234  
43.88 Acres from R/L  
North American 1983 datum Lat/Long Grid



116°7'W 116°6.01'W 116°5'W 116°4'W 116°3'W 116°2'W 116°1'W 116°W 115°59'W 115°58'W 115°57'W 115°56'W 115°55'W 115°54'W 115°53'W 115°52'W 115°51.01'W 115°50'W 115°49'W 115°48'W 115°47'W 115°46'W 115°45'W 115°44'W 115°43'W

48°19'N 48°20'N 48°21'N 48°22'N 48°23'N 48°24'N 48°25'N 48°26'N 48°27'N 48°28'N 48°29'N 48°30'N 48°31'N 48°32'N 48°33'N 48°34'N 48°35'N 48°36'N 48°37'N 48°38'N 48°39'N 48°40'N