

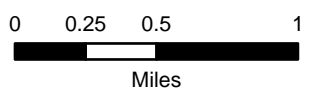
IAP Branch I

Burnt Peak
MT-KNF-000167
8/02/2021

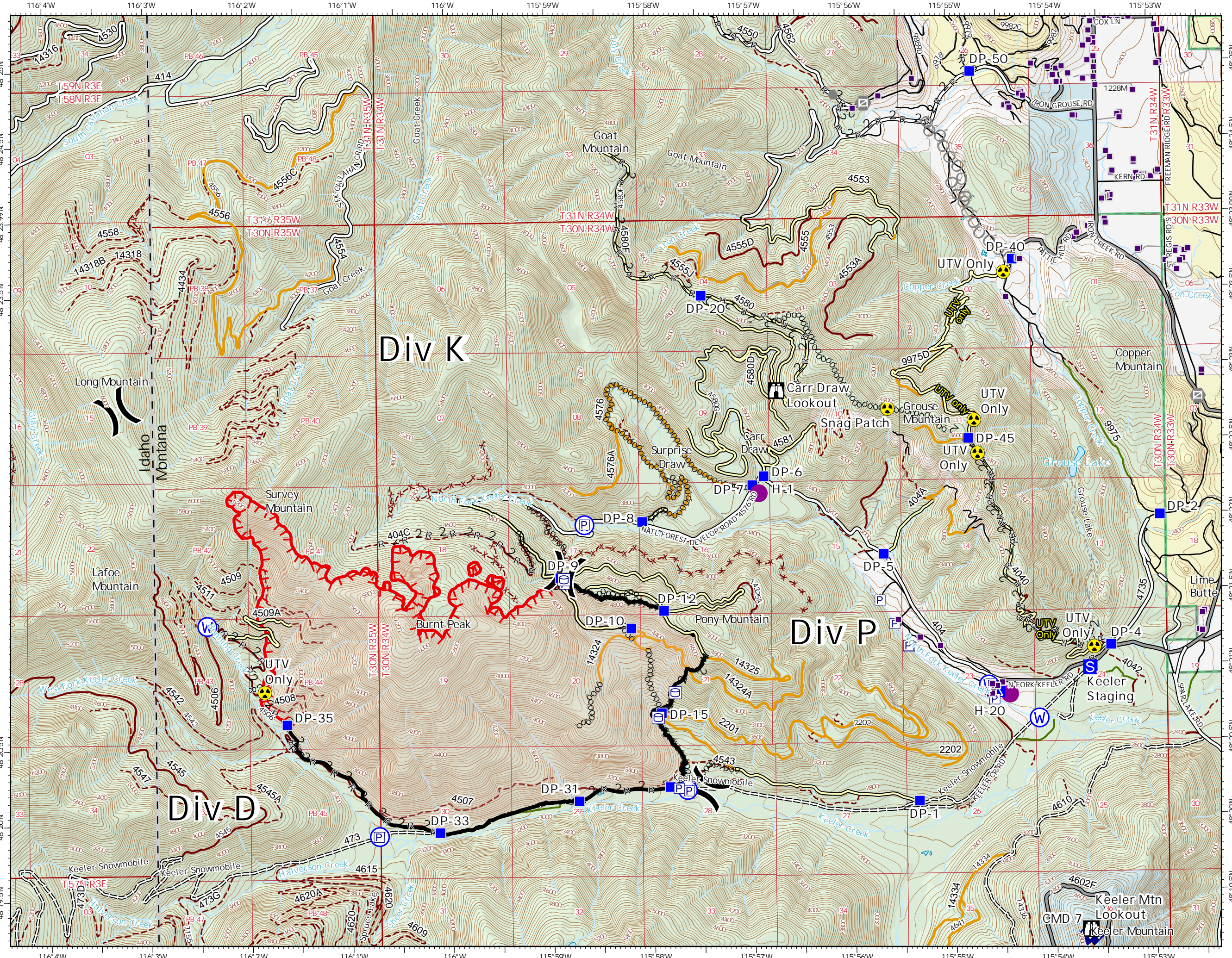
3,305 acres at 7/31/2021 2106 hrs

- Helispot
-) Division Break
- Drop Point
- X Camp
- S Staging Area
- H Lookout
- P Pump
- W Water Tank
- Other
- ⊠ Gate
- ⊞ Bridge
- ⊞ Repeater
- ☠ Hazard
- W Water Source

- 000000 Completed Dozer Line
- H 2 Completed Hand Line
- R 2 Completed Road as Line
- 0 0 Planned Dozer Line
- Access or Improved Road
- Other
- FF Fire Edge
- Contained Line
- Roads Open to Highway Legal Vehicles Only, Yearlong
- Roads Open to Highway Legal Vehicles Only, Seasonal
- Other Public Roads
- Private Roads
- 1 - IMPASSABLE TO MOTORIZED VEHICLES
- 2 - RESTRICTED/LEGALLY GATED ADMN USE
- 3 - BARRIERED/LEGALLY NO ADMN USE
- 4 - OPEN DURING BEAR SEASON
- X- Decommissioned
- FS Forest Service
- MT State
- Other Private
- Private Timberland
- Structure
- State Boundary



GB Team 6
8/1/2021 2113
Acres from IR
North American 1983 Datum. LatLong Grid



Div K

Div P

Div D

Keeler Mtn
CMD 7
Keeler Mountain
Keeler Lookout