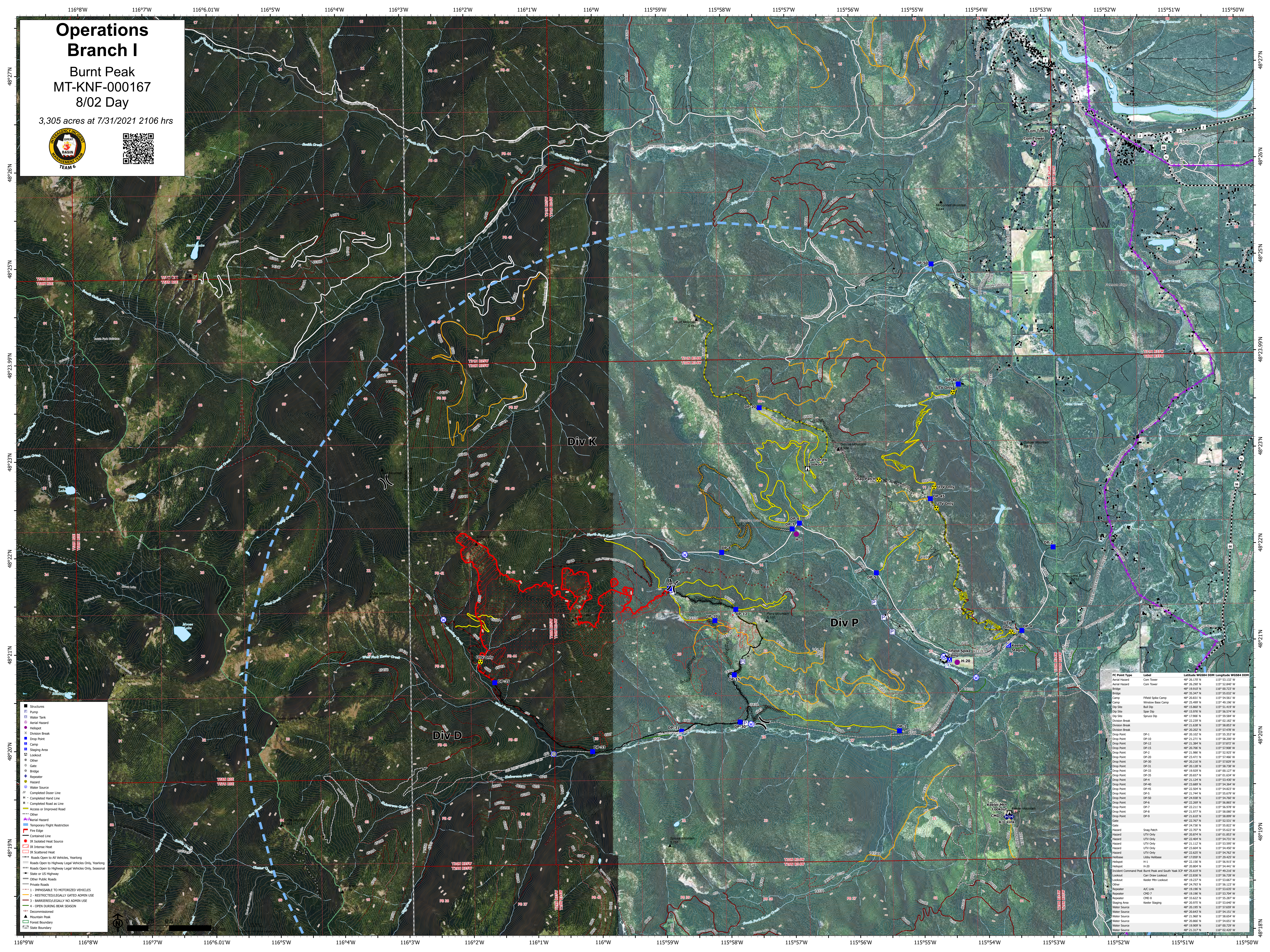


Operations Branch I

Burnt Peak
MT-KNF-000167
8/02 Day

3,305 acres at 7/31/2021 2106 hrs



- Structures
- Pump
- Water Tank
- Aerial Hazard
- Hotspot
- Division Break
- Drop Point
- Camp
- Staging Area
- Lookout
- Over
- Gate
- Bridge
- Repeater
- Heliport
- Water Source
- Completed Dozer Line
- H - Completed Hand Line
- R - Completed Road as Line
- Access or Improved Road
- Other
- Aerial Hazard
- Temporary Flight Restriction
- Fire Edge
- Contained Line
- IR Intense Heat
- IR Scattered Heat
- Roads Open to All Vehicles, Yearlong
- Roads Open to Highway Legal Vehicles Only, Yearlong
- Roads Open to Highway Legal Vehicles Only, Seasonal
- State or US Highway
- Other Public Roads
- Private Roads
- 1 - IMPASSABLE TO MOTORIZED VEHICLES
- 2 - RESTRICTED/LEGALLY GATED ADMIN USE
- 3 - BARRIERED/LEGALLY NO ADMIN USE
- 4 - OPEN DURING BEAR SEASON
- Decommissioned
- Mountain Peak
- Forest Boundary
- State Boundary

FC Point Type	Label	Latitude WGS84	Longitude WGS84
Aerial Hazard	Com Tower	48° 26.290' N	115° 52.840' W
Aerial Hazard	Com Tower	48° 19.810' N	116° 00.210' W
Bridge		48° 35.347' N	115° 55.032' W
Camp	Field Spike Camp	48° 20.831' N	115° 54.561' W
Camp	Window Base Camp	48° 21.699' N	115° 49.590' W
Cliff Site		48° 15.860' N	115° 51.419' W
Cliff Site	Spur Dip	48° 15.970' N	115° 56.574' W
Cliff Site	Spur Dip	48° 17.960' N	115° 59.594' W
Division Break		48° 22.239' N	116° 01.182' W
Division Break		48° 21.838' N	115° 58.857' W
Division Break		48° 20.202' N	115° 57.478' W
Drop Point	DP-1	48° 20.102' N	115° 55.353' W
Drop Point	DP-2	48° 21.060' N	115° 52.927' W
Drop Point	DP-12	48° 21.304' N	115° 57.877' W
Drop Point	DP-15	48° 20.700' N	115° 57.900' W
Drop Point	DP-16	48° 21.460' N	115° 52.927' W
Drop Point	DP-20	48° 23.471' N	115° 57.466' W
Drop Point	DP-20	48° 20.210' N	115° 57.827' W
Drop Point	DP-21	48° 20.120' N	115° 56.287' W
Drop Point	DP-22	48° 21.820' N	115° 53.520' W
Drop Point	DP-23	48° 19.929' N	116° 01.127' W
Drop Point	DP-25	48° 20.657' N	116° 01.634' W
Drop Point	DP-26	48° 21.820' N	115° 53.520' W
Drop Point	DP-40	48° 23.689' N	115° 54.364' W
Drop Point	DP-41	48° 22.556' N	115° 54.212' W
Drop Point	DP-5	48° 21.744' N	115° 55.679' W
Drop Point	DP-50	48° 24.938' N	115° 54.260' W
Drop Point	DP-51	48° 22.209' N	115° 56.867' W
Drop Point	DP-7	48° 22.211' N	115° 56.978' W
Drop Point	DP-8	48° 21.977' N	115° 58.002' W
Drop Point	DP-9	48° 21.610' N	115° 56.867' W
Gate		48° 22.767' N	115° 52.531' W
Gate		48° 24.730' N	115° 55.822' W
Hazard		48° 22.027' N	115° 55.822' W
Hazard	UTV Only	48° 20.874' N	116° 01.853' W
Hazard	UTV Only	48° 22.606' N	115° 54.503' W
Hazard	UTV Only	48° 21.112' N	115° 53.959' W
Hazard	UTV Only	48° 23.604' N	115° 54.450' W
Hazard	UTV Only	48° 22.625' N	115° 54.212' W
Heliport	Libby Heliport	48° 17.059' N	115° 29.425' W
Heliport	H-1	48° 22.150' N	115° 56.913' W
Heliport	H-20	48° 21.510' N	115° 53.619' W
Incident Command Post	Burnt Peak and South Yaak ICP	48° 25.619' N	115° 49.216' W
Lookout	Carroll Lookout	48° 22.830' N	115° 56.720' W
Lookout	Reeder Fire Lookout	48° 19.237' N	115° 53.619' W
Other		48° 24.793' N	115° 56.123' W
Repeater	CHC Link	48° 19.190' N	115° 53.630' W
Repeater	CHC 7	48° 19.190' N	115° 53.704' W
Repeater	CHD 8	48° 33.622' N	115° 55.287' W
Staging Area		48° 20.190' N	115° 53.940' W
Water Source	Reeder Staging	48° 20.190' N	115° 57.659' W
Water Source		48° 20.647' N	115° 54.151' W
Water Source		48° 21.900' N	115° 56.914' W
Water Source		48° 20.860' N	115° 54.651' W
Water Source		48° 19.909' N	116° 00.729' W
Water Source		48° 21.317' N	116° 01.402' W