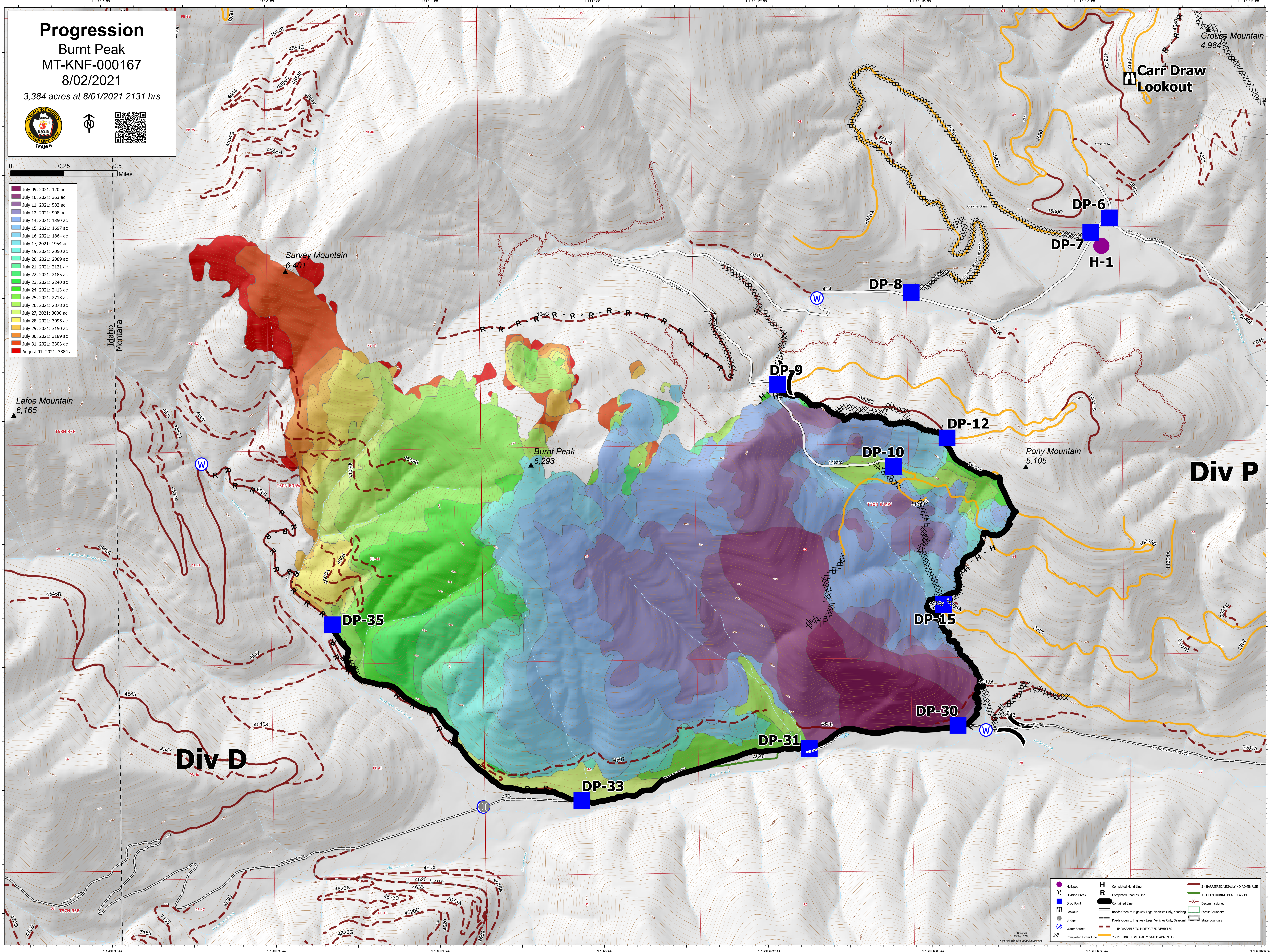
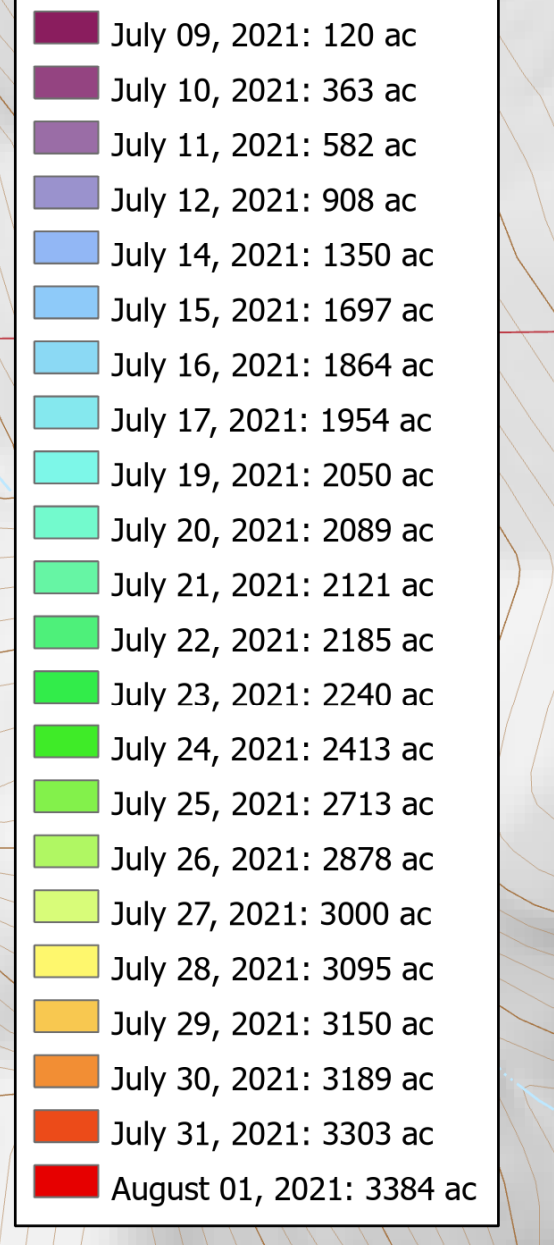
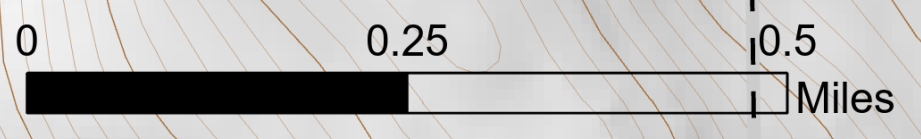
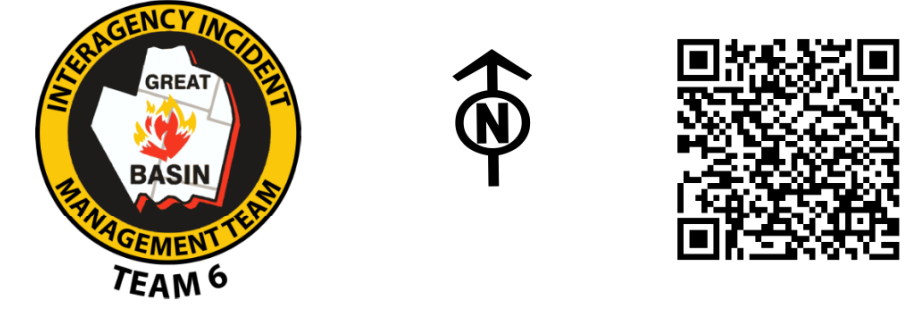


Progression

Burnt Peak
MT-KNF-000167
8/02/2021

3,384 acres at 8/01/2021 2131 hrs



Heliport	Completed Hard Line	3 - BARRIERED/LEGALLY NO ADMIN USE
Drop Point	Completed Road as Line	4 - OPEN DURING BEAR SEASON
Drop Point	Contained Line	Decommissioned
Lookout	Roads Open to Highway Legal Vehicles Only, Yearlong	Forest Boundary
Water Source	Roads Open to Highway Legal Vehicles Only, Seasonal	State Boundary
Lookout	1 - IMPASSABLE TO MOTORIZED VEHICLES	State Boundary
Lookout	2 - RESTRICTED/LEGALLY GATED ADMIN USE	State Boundary