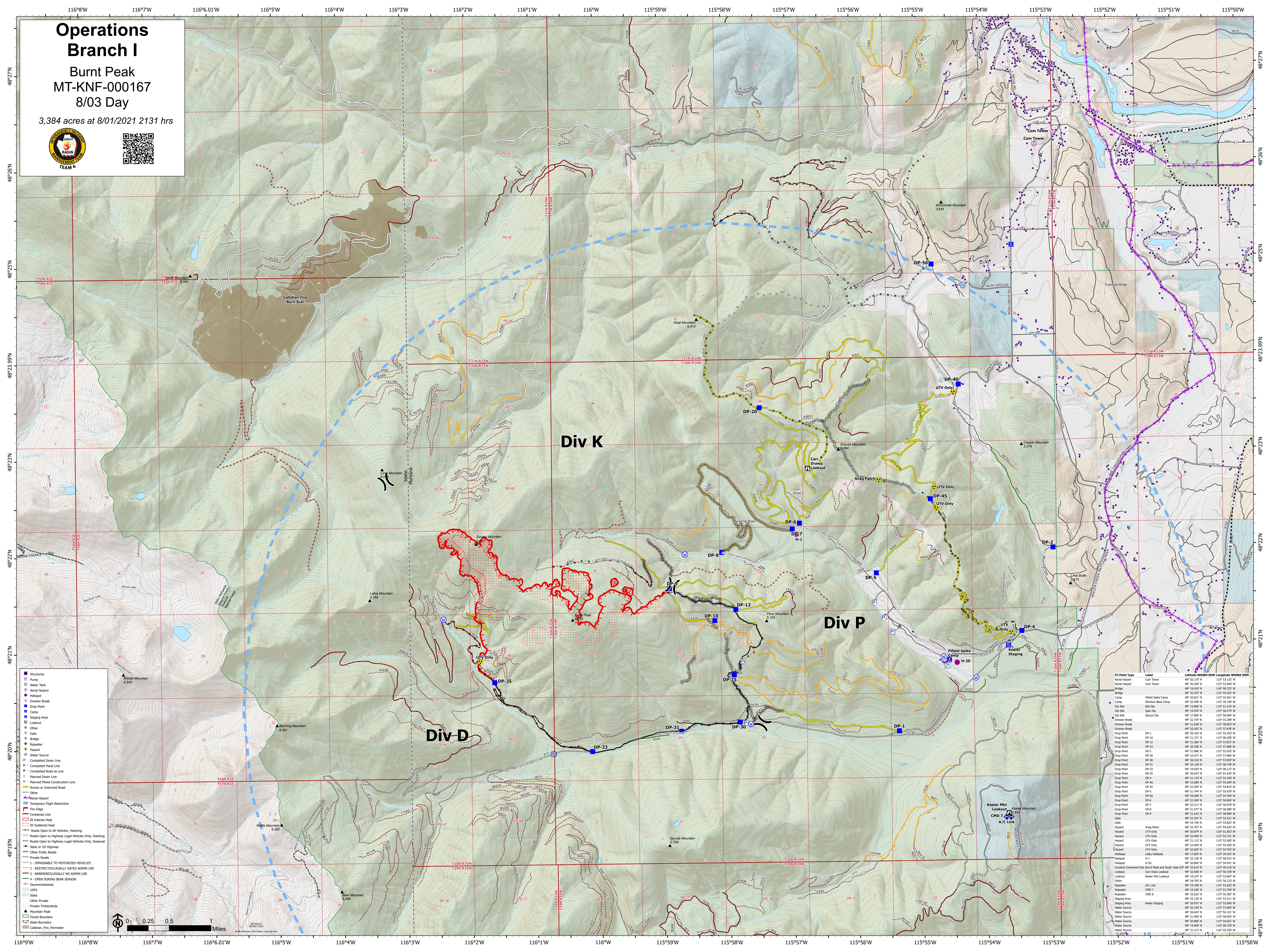


Operations Branch I

Burnt Peak
MT-KNF-000167
8/03 Day

3,384 acres at 8/01/2021 2131 hrs



- Structures
- Pump
- Water Tank
- Aerial Hazard
- Helipad
- Division Break
- Drop Point
- Camp
- Staging Area
- Lookout
- Gate
- Other
- Repeater
- Hazard
- Water Source
- Completed Dozer Line
- H - Completed Hand Line
- R - Completed Road as Line
- Planned Dozer Line
- Planned Hand Construction Line
- Access or Improved Road
- Other
- Aerial Hazard
- Temporary Flight Restriction
- Fire Edge
- Contained Line
- IR Scattered Heat
- Roads Open to All Vehicles, Yearling
- Roads Open to Highway Legal Vehicles Only, Yearling
- Roads Open to Highway Legal Vehicles Only, Seasonal
- State or US Highway
- Other Public Roads
- Private Roads
- 1 - IMPASSABLE TO MOTORIZED VEHICLES
- 2 - RESTRICTED/LEGALLY GATED ADMIN USE
- 3 - BARRIERS/LEGALLY NO ADMIN USE
- 4 - OPEN DURING BEAR SEASON
- Decommissioned
- USFS
- State
- Other Private
- Private Timberlands
- Mountain Peak
- Forest Boundary
- State Boundary
- Callahan_Fire_Perimeter

IC Point Type	Label	Latitude	Longitude
Aerial Hazard	Com Tower	48° 26.172' N	115° 53.132' W
Aerial Hazard	Com Tower	48° 26.297' N	115° 52.867' W
Aerial Hazard	Com Tower	48° 26.925' N	115° 52.927' W
Aerial Hazard	Com Tower	48° 26.947' N	115° 55.032' W
Bridge			
Camp	Field Spike Camp	48° 20.831' N	115° 54.561' W
Camp	Window Bear Camp	48° 24.869' N	115° 55.519' W
Dip Site	Buff Dip	48° 15.867' N	115° 53.459' W
Dip Site	Spot Dip	48° 15.978' N	115° 55.574' W
Dip Site	Spine Dip	48° 17.906' N	115° 59.584' W
Division Break			
Division Break		48° 23.754' N	116° 03.289' W
Division Break		48° 23.828' N	115° 58.833' W
Division Break		48° 20.282' N	115° 57.478' W
Drop Point	DP-1	48° 20.102' N	115° 55.353' W
Drop Point	DP-10	48° 21.271' N	115° 55.027' W
Drop Point	DP-12	48° 21.384' N	115° 57.872' W
Drop Point	DP-15	48° 20.765' N	115° 59.808' W
Drop Point	DP-2	48° 21.986' N	115° 53.527' W
Drop Point	DP-20	48° 21.471' N	115° 57.466' W
Drop Point	DP-30	48° 20.218' N	115° 53.202' W
Drop Point	DP-31	48° 20.128' N	115° 58.738' W
Drop Point	DP-33	48° 19.929' N	116° 00.127' W
Drop Point	DP-35	48° 20.627' N	115° 55.134' W
Drop Point	DP-4	48° 21.124' N	115° 53.430' W
Drop Point	DP-40	48° 22.889' N	115° 54.368' W
Drop Point	DP-45	48° 21.546' N	115° 54.627' W
Drop Point	DP-5	48° 21.744' N	115° 55.879' W
Drop Point	DP-6	48° 20.928' N	115° 54.762' W
Drop Point	DP-6	48° 22.269' N	115° 56.867' W
Drop Point	DP-7	48° 22.211' N	115° 56.978' W
Drop Point	DP-8	48° 21.877' N	115° 56.887' W
Drop Point	DP-9	48° 21.615' N	115° 58.899' W
Gate		48° 22.787' N	115° 52.831' W
Gate		48° 21.195' N	115° 55.827' W
Hazard	Shag Patch	48° 22.707' N	115° 55.827' W
Hazard	UTV Only	118° 59.823' W	
Hazard	UTV Only	48° 22.404' N	115° 54.731' W
Hazard	UTV Only	48° 21.112' N	115° 53.993' W
Hazard	UTV Only	48° 20.928' N	115° 54.762' W
Hazard	UTV Only	48° 22.625' N	115° 54.762' W
Helipad		48° 17.059' N	115° 29.423' W
Helipad	H-3	48° 20.804' N	115° 54.441' W
Incident Command Post	Burnt Peak and South Yank ICP	48° 20.657' N	115° 56.216' W
Lookout	Car Draw Lookout	48° 22.836' N	115° 56.708' W
Lookout	Keeler Mtn Lookout	48° 19.237' N	115° 53.607' W
Other		48° 20.928' N	115° 54.762' W
Other		48° 21.317' N	115° 56.217' W
Repeater	A/C Link	48° 18.196' N	115° 53.835' W
Repeater	CHD 7	48° 18.195' N	115° 53.704' W
Repeater	CHD 8	48° 18.192' N	115° 53.511' W
Staging Area		48° 21.130' N	115° 53.511' W
Staging Area	Keeler Staging	48° 20.975' N	115° 53.462' W
Water Source		48° 20.647' N	115° 54.151' W
Water Source		48° 21.967' N	115° 58.528' W
Water Source		48° 20.866' N	115° 54.851' W
Water Source		48° 19.909' N	116° 00.729' W
Water Source		48° 21.317' N	115° 52.407' W

