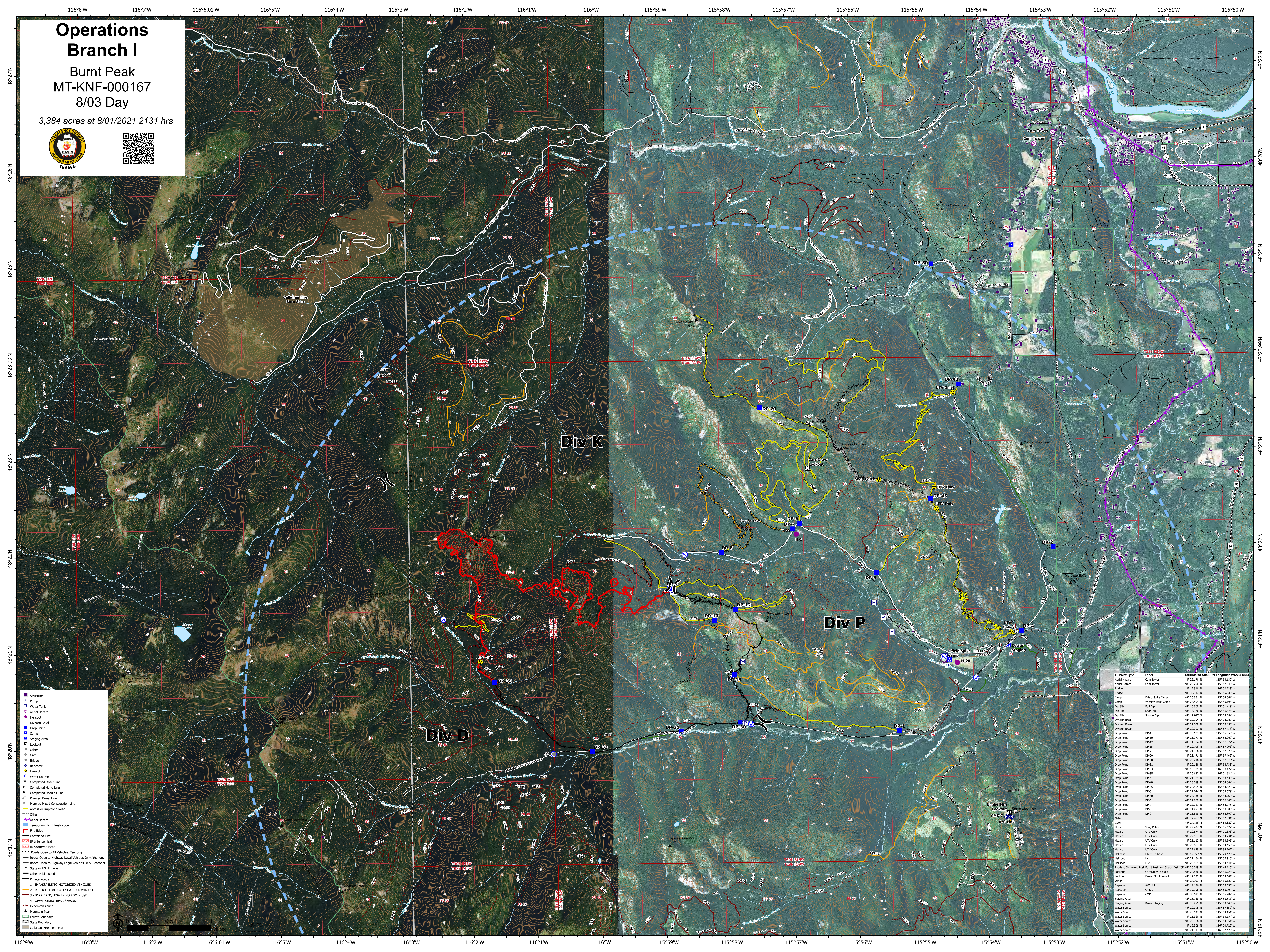


# Operations Branch I

Burnt Peak  
MT-KNF-000167  
8/03 Day

3,384 acres at 8/01/2021 2131 hrs



- Structures
- Pump
- Water Tank
- Aerial Hazard
- Heliport
- Division Break
- Drop Point
- Camp
- Staging Area
- Lookout
- Other
- Gate
- Bridge
- Repeater
- Hazard
- Water Source
- Completed Doser Line
- Completed Hand Line
- Planned Doser Line
- Planned Hand Construction Line
- Access or Improved Road
- Other
- Aerial Hazard
- Temporary Flight Restriction
- Fire Edge
- Contained Line
- IR Intense Heat
- IR Scattered Heat
- Roads Open to All Vehicles, Yearling
- Roads Open to Highway Legal Vehicles Only, Yearling
- Roads Open to Highway Legal Vehicles Only, Seasonal
- State or US Highway
- Other Public Roads
- Private Roads
- 1 - IMPASSABLE TO MOTORIZED VEHICLES
- 2 - RESTRICTED/LEGALLY GATED ADMIN USE
- 3 - BARRIERS/LEGALLY NO ADMIN USE
- 4 - OPEN DURING BEAR SEASON
- Decommissioned
- Mountain Peak
- Forest Boundary
- State Boundary
- Catalban\_Fire\_Perimeter

IC Point Type	Label	Latitude	Longitude	WGS84 UTM
Aerial Hazard	Com Tower	48° 26.172' N	115° 51.512' W	52 840 7
Aerial Hazard	Com Tower	48° 26.297' N	115° 52.840' W	52 840 7
Bridge		48° 35.347' N	115° 55.032' W	55 032 7
Camp	Field Spike Camp	48° 20.831' N	115° 54.561' W	54 561 7
Dip Site	Buff Dip	48° 15.867' N	115° 51.459' W	51 459 7
Dip Site	Spine Dip	48° 15.978' N	115° 55.297' W	55 297 7
Dip Site	Spine Dip	48° 12.906' N	115° 59.584' W	59 584 7
Division Break		48° 22.754' N	115° 02.399' W	02 399 7
Division Break		48° 21.028' N	115° 58.853' W	58 853 7
Division Break		48° 20.202' N	115° 57.478' W	57 478 7
Drop Point	DP-1	48° 20.102' N	115° 55.353' W	55 353 7
Drop Point	DP-10	48° 21.271' N	115° 52.907' W	52 907 7
Drop Point	DP-12	48° 21.384' N	115° 57.872' W	57 872 7
Drop Point	DP-15	48° 20.705' N	115° 59.988' W	59 988 7
Drop Point	DP-2	48° 21.986' N	115° 52.907' W	52 907 7
Drop Point	DP-20	48° 21.471' N	115° 57.866' W	57 866 7
Drop Point	DP-30	48° 20.218' N	115° 53.204' W	53 204 7
Drop Point	DP-31	48° 20.128' N	115° 58.738' W	58 738 7
Drop Point	DP-33	48° 19.929' N	115° 00.127' W	00 127 7
Drop Point	DP-35	48° 20.657' N	115° 51.514' W	51 514 7
Drop Point	DP-4	48° 21.124' N	115° 53.430' W	53 430 7
Drop Point	DP-45	48° 21.869' N	115° 54.568' W	54 568 7
Drop Point	DP-45	48° 21.506' N	115° 54.617' W	54 617 7
Drop Point	DP-5	48° 21.744' N	115° 55.879' W	55 879 7
Drop Point	DP-6	48° 21.028' N	115° 54.667' W	54 667 7
Drop Point	DP-6	48° 22.269' N	115° 56.860' W	56 860 7
Drop Point	DP-7	48° 22.211' N	115° 56.987' W	56 987 7
Drop Point	DP-8	48° 21.977' N	115° 54.987' W	54 987 7
Drop Point	DP-9	48° 21.610' N	115° 58.899' W	58 899 7
Gate		48° 22.767' N	115° 52.831' W	52 831 7
Gate		48° 21.730' N	115° 55.837' W	55 837 7
Heliport		48° 22.707' N	115° 55.837' W	55 837 7
Heliport	H-20	48° 20.804' N	115° 54.441' W	54 441 7
Lookout	Com Tower	48° 26.172' N	115° 51.512' W	51 512 7
Lookout	Com Tower	48° 26.297' N	115° 52.840' W	52 840 7
Lookout	Com Tower	48° 22.836' N	115° 56.700' W	56 700 7
Lookout	Com Tower	48° 19.237' N	115° 53.867' W	53 867 7
Lookout	Com Tower	48° 21.028' N	115° 54.667' W	54 667 7
Lookout	Com Tower	48° 22.625' N	115° 54.742' W	54 742 7
Lookout	Com Tower	48° 17.059' N	115° 29.453' W	29 453 7
Repeater	CHD 7	48° 19.190' N	115° 53.204' W	53 204 7
Repeater	CHD 8	48° 19.190' N	115° 53.204' W	53 204 7
Repeater	CHD 9	48° 19.190' N	115° 53.204' W	53 204 7
Staging Area	Keeler Staging	48° 21.130' N	115° 53.111' W	53 111 7
Water Source	Keeler Staging	48° 20.975' N	115° 53.660' W	53 660 7
Water Source		48° 21.667' N	115° 52.907' W	52 907 7
Water Source		48° 20.866' N	115° 54.651' W	54 651 7
Water Source		48° 19.909' N	115° 00.729' W	00 729 7
Water Source		48° 21.317' N	115° 52.831' W	52 831 7