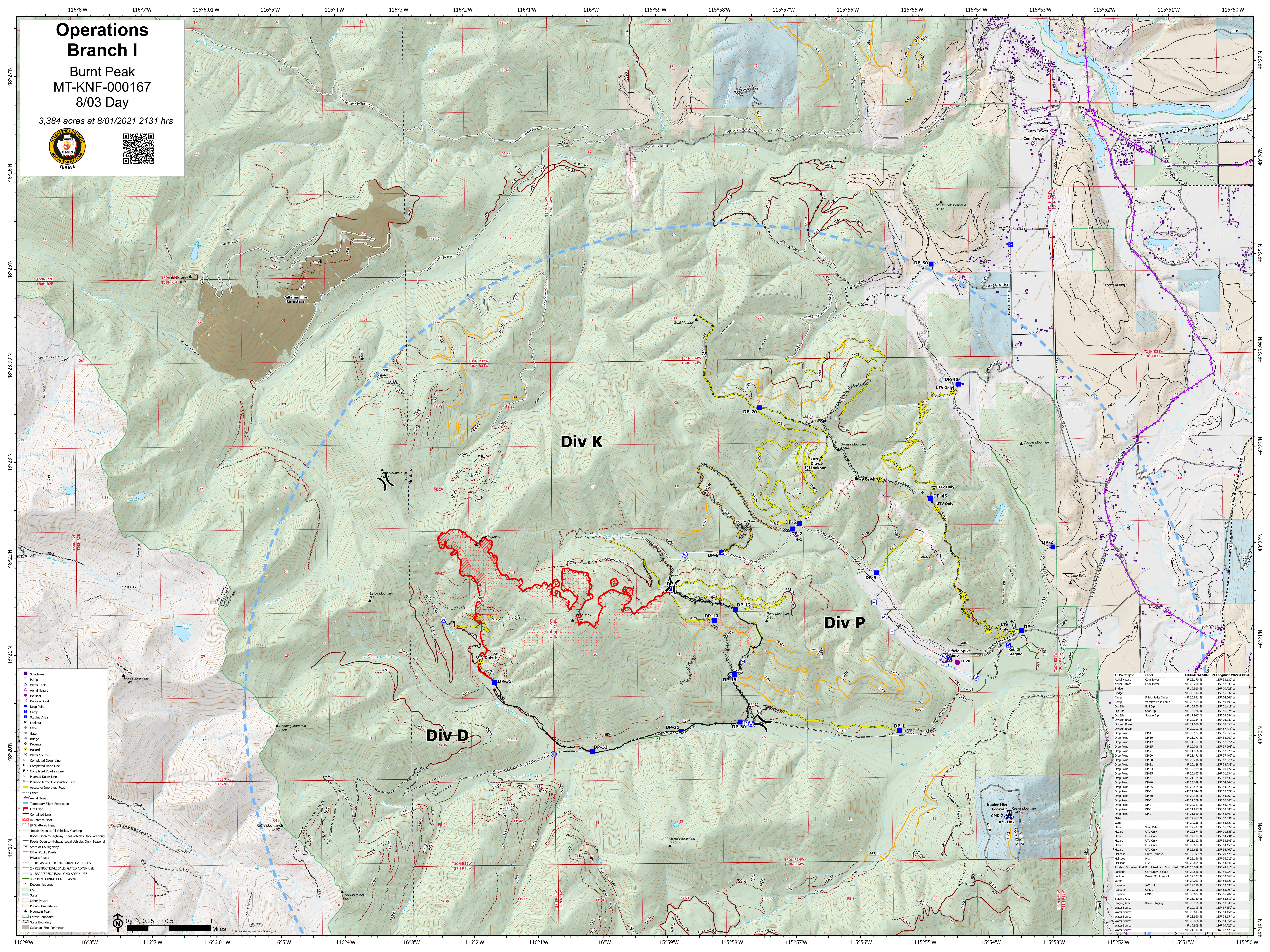


Operations Branch I

Burnt Peak
MT-KNF-000167
8/03 Day

3,384 acres at 8/01/2021 2131 hrs



- Structures
- Pump
- Water Tank
- Aerial Hazard
- Helipad
- Division Break
- Drop Point
- Camp
- Staging Area
- Lookout
- Other
- Repeater
- Hazard
- Water Source
- Completed Doser Line
- H - Completed Hand Line
- R - Completed Road as Line
- Planned Doser Line
- Planned Hand Construction Line
- Access or Improved Road
- Other
- Aerial Hazard
- Temporary Flight Restriction
- Fire Edge
- Contained Line
- IR Scattered Heat
- Roads Open to All Vehicles, Yearlong
- Roads Open to Highway Legal Vehicles Only, Yearlong
- Roads Open to Highway Legal Vehicles Only, Seasonal
- State or US Highway
- Other Public Roads
- Private Roads
- 1 - IMPASSABLE TO MOTORIZED VEHICLES
- 2 - RESTRICTED/LEGALLY GATED ADMIN USE
- 3 - BARRIERS/LEGALLY NO ADMIN USE
- 4 - OPEN DURING BEAR SEASON
- Decommissioned
- USFS
- State
- Other Private
- Private Timberlands
- Mountain Peak
- Town Boundary
- State Boundary
- Callahan_Fire_Perimeter

IC Point Type	Label	Latitude	Longitude
Com Tower	Com Tower	48° 26.172' N	115° 53.132' W
Com Tower	Com Tower	48° 26.297' N	115° 52.867' W
Aerial Hazard	Aerial Hazard	48° 26.102' N	115° 55.032' W
Aerial Hazard	Aerial Hazard	48° 26.347' N	115° 55.032' W
Bridge	Field Spike Camp	48° 20.833' N	115° 54.561' W
Camp	Window Base Camp	48° 25.999' N	115° 49.561' W
Dip Site	Bull Dip	48° 15.860' N	115° 53.459' W
Dip Site	Spill Dip	48° 16.976' N	115° 55.574' W
Dip Site	Spine Dip	48° 17.900' N	115° 59.584' W
Division Break	Division Break	48° 23.754' N	115° 03.289' W
Division Break	Division Break	48° 23.036' N	115° 56.853' W
Division Break	Division Break	48° 20.202' N	115° 57.476' W
Drop Point	DP-1	48° 20.102' N	115° 55.353' W
Drop Point	DP-10	48° 21.271' N	115° 55.353' W
Drop Point	DP-12	48° 21.384' N	115° 57.872' W
Drop Point	DP-15	48° 20.700' N	115° 58.048' W
Drop Point	DP-2	48° 21.980' N	115° 52.827' W
Drop Point	DP-20	48° 23.471' N	115° 57.466' W
Drop Point	DP-30	48° 20.216' N	115° 57.020' W
Drop Point	DP-31	48° 20.128' N	115° 56.736' W
Drop Point	DP-33	48° 19.929' N	115° 00.127' W
Drop Point	DP-35	48° 20.027' N	115° 01.834' W
Drop Point	DP-4	48° 21.124' N	115° 53.439' W
Drop Point	DP-40	48° 23.869' N	115° 54.361' W
Drop Point	DP-45	48° 23.246' N	115° 54.827' W
Drop Point	DP-5	48° 21.744' N	115° 55.879' W
Drop Point	DP-6	48° 20.928' N	115° 54.902' W
Drop Point	DP-6	48° 22.269' N	115° 56.867' W
Drop Point	DP-7	48° 22.211' N	115° 56.078' W
Drop Point	DP-8	48° 21.077' N	115° 56.887' W
Drop Point	DP-9	48° 21.655' N	115° 58.899' W
Gate	Gate	48° 22.767' N	115° 52.831' W
Gate	Gate	48° 21.736' N	115° 55.817' W
Hazard	Snag Patch	48° 22.707' N	115° 55.827' W
Hazard	UTV Only	48° 20.804' N	115° 54.441' W
Hazard	UTV Only	48° 22.723' N	115° 58.818' W
Hazard	UTV Only	48° 22.404' N	115° 54.731' W
Hazard	UTV Only	48° 21.112' N	115° 53.995' W
Hazard	UTV Only	48° 20.928' N	115° 54.902' W
Hazard	UTV Only	48° 22.625' N	115° 54.762' W
Hazard	UTV Only	48° 22.625' N	115° 54.762' W
Helibase	Libby Helibase	48° 17.099' N	115° 29.423' W
Helibase	H-1	48° 21.155' N	115° 55.817' W
Helibase	H-20	48° 20.804' N	115° 54.441' W
Lookout	Lookout Command Post Burnt Peak and South Yank ICP	48° 16.818' N	115° 58.818' W
Lookout	Car Draw Lookout	48° 22.836' N	115° 56.736' W
Lookout	Keeler Mtn Lookout	48° 19.227' N	115° 53.667' W
Other	Other	48° 20.793' N	115° 56.217' W
Repeater	A/C Link	48° 19.196' N	115° 53.835' W
Repeater	CHD-7	48° 19.196' N	115° 53.704' W
Repeater	CHD-8	48° 21.022' N	115° 55.731' W
Staging Area	Staging Area	48° 21.130' N	115° 53.511' W
Water Source	Keeler Staging	48° 20.975' N	115° 53.460' W
Water Source	Water Source	48° 20.643' N	115° 57.920' W
Water Source	Water Source	48° 21.967' N	115° 54.531' W
Water Source	Water Source	48° 20.866' N	115° 54.851' W
Water Source	Water Source	48° 19.909' N	115° 00.729' W
Water Source	Water Source	48° 21.317' N	115° 54.317' W

