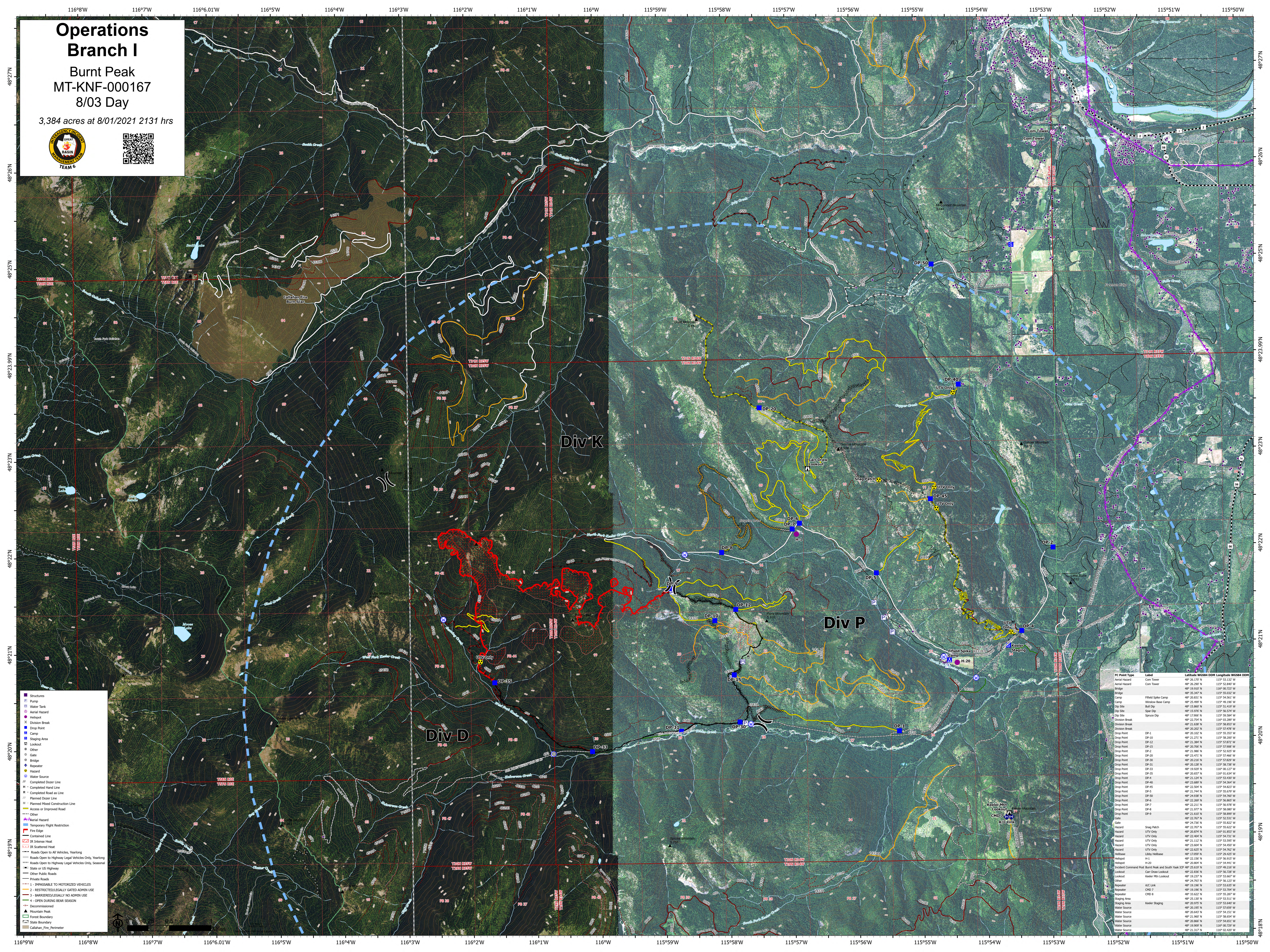


# Operations Branch I

Burnt Peak  
MT-KNF-000167  
8/03 Day

3,384 acres at 8/01/2021 2131 hrs



IC Point Type	Label	Latitude	Longitude	DOM	Length	Width	WSR	DOH
Aerial Hazard	Com Tower	48° 26.172' N	115° 51.132' W					
Aerial Hazard	Com Tower	48° 26.297' N	115° 52.847' W					
Bridge		48° 35.347' N	115° 55.632' W					
Camp	Field Spike Camp	48° 20.833' N	115° 54.561' W					
Dip Site	Buff Dip	48° 15.867' N	115° 51.459' W					
Dip Site	Spine Dip	48° 15.976' N	115° 55.294' W					
Dip Site	Spine Dip	48° 17.906' N	115° 59.584' W					
Division Break		48° 23.754' N	115° 03.289' W					
Division Break		48° 21.035' N	115° 56.853' W					
Division Break		48° 20.252' N	115° 57.476' W					
Drop Point	DP-1	48° 20.102' N	115° 55.373' W					
Drop Point	DP-10	48° 21.271' N	115° 57.827' W					
Drop Point	DP-12	48° 21.384' N	115° 57.872' W					
Drop Point	DP-15	48° 20.705' N	115° 57.987' W					
Drop Point	DP-2	48° 21.986' N	115° 52.502' W					
Drop Point	DP-20	48° 23.471' N	115° 57.466' W					
Drop Point	DP-30	48° 20.216' N	115° 57.024' W					
Drop Point	DP-31	48° 20.128' N	115° 56.736' W					
Drop Point	DP-33	48° 19.829' N	115° 00.127' W					
Drop Point	DP-35	48° 20.657' N	115° 51.248' W					
Drop Point	DP-4	48° 21.124' N	115° 53.439' W					
Drop Point	DP-46	48° 22.869' N	115° 54.261' W					
Drop Point	DP-45	48° 22.546' N	115° 54.817' W					
Drop Point	DP-5	48° 21.744' N	115° 55.879' W					
Drop Point	DP-6	48° 22.028' N	115° 52.967' W					
Drop Point	DP-6	48° 22.269' N	115° 56.865' W					
Drop Point	DP-7	48° 22.211' N	115° 56.987' W					
Drop Point	DP-8	48° 21.877' N	115° 56.887' W					
Drop Point	DP-9	48° 21.615' N	115° 58.899' W					
Gate		48° 22.767' N	115° 52.831' W					
Gate		48° 21.735' N	115° 55.817' W					
Hazard	Snag Patch	48° 22.707' N	115° 55.827' W					
Hazard	UTV Only	48° 20.816' N	115° 58.853' W					
Hazard	UTV Only	48° 21.404' N	115° 54.731' W					
Hazard	UTV Only	48° 21.112' N	115° 53.995' W					
Hazard	UTV Only	48° 21.604' N	115° 54.402' W					
Hazard	UTV Only	48° 22.625' N	115° 54.762' W					
Helibase	Libby Helibase	48° 17.059' N	115° 26.452' W					
Helipad	H-1	48° 21.155' N	115° 55.357' W					
Helipad	H-20	48° 20.804' N	115° 54.441' W					
Lookout	Lookout Command Post Burnt Peak and South Fork ICP	48° 24.639' N	115° 56.216' W					
Lookout	Carr Draw Lookout	48° 22.836' N	115° 56.738' W					
Lookout	Keeler Mtn Lookout	48° 19.237' N	115° 53.667' W					
Other		48° 20.793' N	115° 56.527' W					
Repeater	A/C Link	48° 18.196' N	115° 53.835' W					
Repeater	CH0-7	48° 18.196' N	115° 53.764' W					
Repeater	CH0-8	48° 18.196' N	115° 53.817' W					
Staging Area		48° 21.130' N	115° 53.511' W					
Water Source	Keeler Staging	48° 20.975' N	115° 53.640' W					
Water Source		48° 21.967' N	115° 57.970' W					
Water Source		48° 20.643' N	115° 54.151' W					
Water Source		48° 21.967' N	115° 58.554' W					
Water Source		48° 20.866' N	115° 54.851' W					
Water Source		48° 19.909' N	115° 00.729' W					
Water Source		48° 21.317' N	115° 02.002' W					