

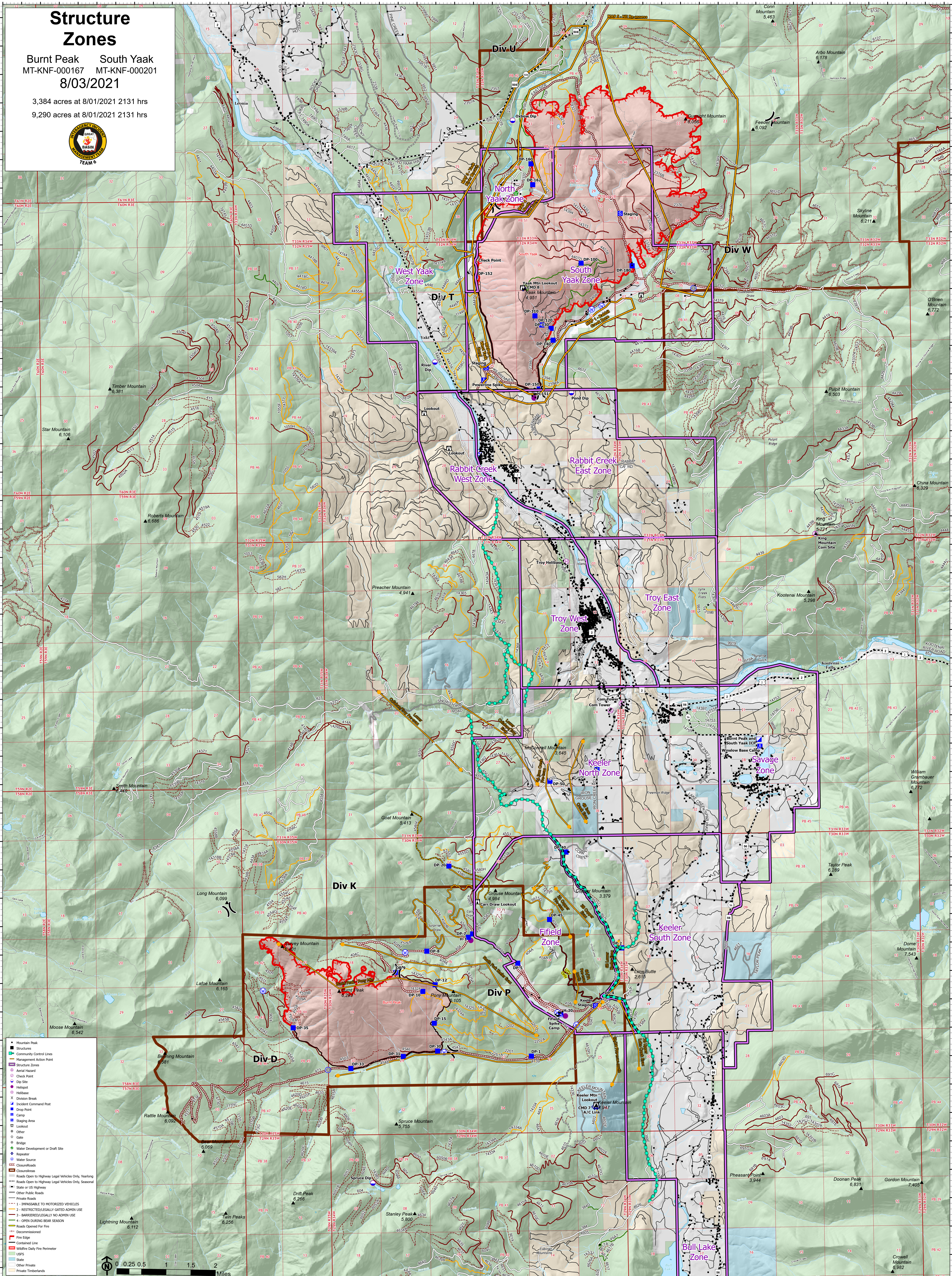
Structure Zones

Burnt Peak South Yaak
MT-KNF-000167 MT-KNF-000201

8/03/2021

3,384 acres at 8/01/2021 2131 hrs

9,290 acres at 8/01/2021 2131 hrs



- Mountain Peak
- Community Control Lines
- Management Action Point
- Structure Zones
- Aerial Hazard
- Check Point
- Dip Site
- Helipoint
- Hellhole
- Incident Command Post
- Drop Point
- Camp
- Staging Area
- Lookout
- Other
- Gate
- Water Development or Draft Site
- Repeater
- Water Source
- Closure/roads
- Closure/roads
- Roads Open to Highway Legal Vehicles Only, Yearlong
- Roads Open to Highway Legal Vehicles Only, Seasonal
- State or US Highway
- Other Public Roads
- Private Roads
- 1 - IMPASSIBLE TO MOTORIZED VEHICLES
- 2 - RESTRICTED LEGALLY GATED ADMIN USE
- 3 - BARRIERS LEGALLY NO ADMIN USE
- 4 - OPEN DURING BEAR SEASON
- Roads Opened For Fire
- Decommissioned
- Fire Edge
- Contained Line
- Wildfire Daily Fire Perimeter
- USFS
- State
- Other Private
- Private Timberlands

0 0.25 0.5 1 1.5 2 Miles