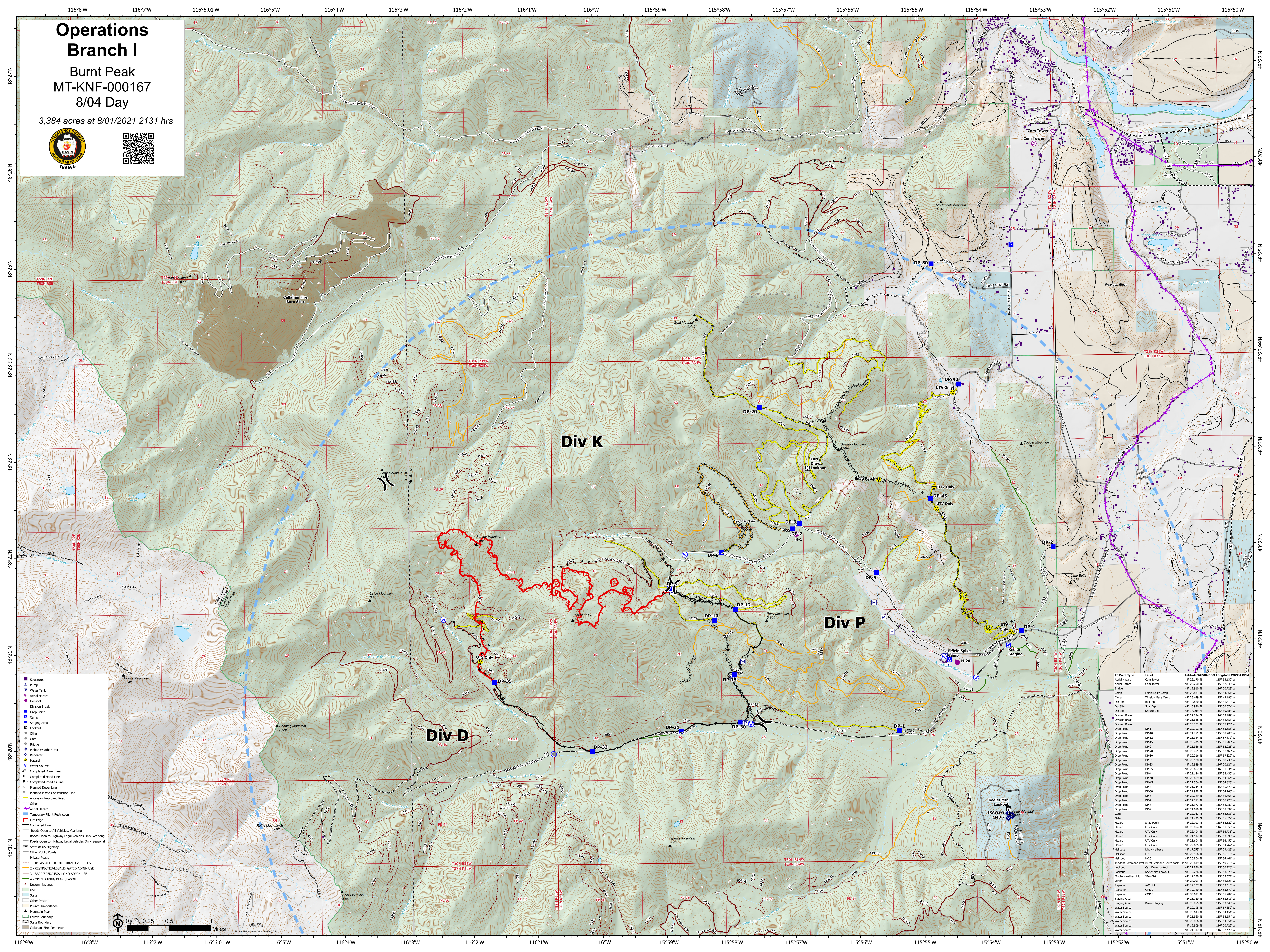


Operations Branch I

Burnt Peak
MT-KNF-000167
8/04 Day

3,384 acres at 8/01/2021 2131 hrs



Div K

Div P

Div D

- Structures
- ⊕ Pump
- ⊕ Water Tank
- ⊕ Aerial Hazard
- ⊕ Helipoint
- ⊕ Division Break
- ⊕ Drop Point
- ⊕ Camp
- ⊕ Staging Area
- ⊕ Lookout
- ⊕ Other
- ⊕ Hazard
- ⊕ Water Source
- ⊕ Completed Dozer Line
- ⊕ Completed Hand Line
- ⊕ Completed Road as Line
- ⊕ Planned Dozer Line
- ⊕ Planned Mixed Construction Line
- ⊕ Access or Improved Road
- ⊕ Aerial Hazard
- ⊕ Temporary Flight Restriction
- ⊕ Fire Edge
- ⊕ Contained Line
- ⊕ Roads Open to All Vehicles, Yearling
- ⊕ Roads Open to Highway Legal Vehicles Only, Yearling
- ⊕ Roads Open to Highway Legal Vehicles Only, Seasonal
- ⊕ State or US Highway
- ⊕ Other Public Roads
- ⊕ Private Roads
- ⊕ IMPASSABLE TO MOTORIZED VEHICLES
- ⊕ RESTRICTED/LEGALLY GATED ADMIN USE
- ⊕ BARREN/ILLEGALLY NO ADMIN USE
- ⊕ OPEN DURING BEAR SEASON
- ⊕ Decommissioned
- ⊕ USFS
- ⊕ State
- ⊕ Other Private
- ⊕ Private Timberlands
- ⊕ Mountain Peak
- ⊕ Forest Boundary
- ⊕ State Boundary
- ⊕ Callahan_Fire_Perimeter

IC Point Type	Label	Latitude	Longitude
Aerial Hazard	Com Tower	48° 26.172' N	115° 53.132' W
Aerial Hazard	Com Tower	48° 26.297' N	115° 52.847' W
Camp	Field Spike Camp	48° 20.831' N	115° 54.561' W
Camp	Window Base Camp	48° 25.497' N	115° 49.190' W
Drop Point	Butt Dip	48° 14.867' N	115° 53.517' W
Drop Point	Spot Dip	48° 15.976' N	115° 56.524' W
Drop Point	Spur Dip	48° 15.966' N	115° 59.584' W
Drop Point	Spur Dip	48° 22.754' N	115° 03.289' W
Division Break	Division Break	48° 21.639' N	115° 58.853' W
Drop Point	DP-1	48° 20.102' N	115° 55.353' W
Drop Point	DP-10	48° 21.271' N	115° 58.207' W
Drop Point	DP-12	48° 21.384' N	115° 55.027' W
Drop Point	DP-15	48° 20.706' N	115° 57.908' W
Drop Point	DP-2	48° 21.986' N	115° 58.825' W
Drop Point	DP-20	48° 21.471' N	115° 57.667' W
Drop Point	DP-30	48° 20.216' N	115° 57.827' W
Drop Point	DP-31	48° 21.128' N	115° 58.784' W
Drop Point	DP-33	48° 19.929' N	115° 00.127' W
Drop Point	DP-35	48° 20.657' N	115° 01.634' W
Drop Point	DP-4	48° 21.124' N	115° 53.037' W
Drop Point	DP-40	48° 21.689' N	115° 54.364' W
Drop Point	DP-45	48° 22.504' N	115° 54.823' W
Drop Point	DP-5	48° 21.747' N	115° 55.979' W
Drop Point	DP-50	48° 24.938' N	115° 54.707' W
Drop Point	DP-6	48° 21.289' N	115° 58.867' W
Drop Point	DP-7	48° 22.211' N	115° 56.978' W
Drop Point	DP-8	48° 21.977' N	115° 58.887' W
Drop Point	DP-9	48° 21.019' N	115° 58.987' W
Gate	Gate	48° 22.767' N	115° 52.531' W
Gate	Gate	48° 24.738' N	115° 58.822' W
Hazard	UTV Only	48° 20.874' N	115° 01.957' W
Hazard	UTV Only	48° 21.404' N	115° 54.711' W
Hazard	UTV Only	48° 21.112' N	115° 53.590' W
Hazard	UTV Only	48° 21.604' N	115° 54.657' W
Hazard	UTV Only	48° 21.289' N	115° 54.782' W
Helibase	Libby Helibase	48° 17.059' N	115° 29.425' W
Helipoint	H-3	48° 22.156' N	115° 56.913' W
Helipoint	H-20	48° 21.805' N	115° 54.617' W
Incident Command Post	Burnt Peak and South Yank ICP	48° 24.619' N	115° 49.216' W
Lookout	Can Draw Lookout	48° 22.838' N	115° 58.208' W
Lookout	Keeler Mtn Lookout	48° 19.276' N	115° 53.972' W
Mobile Weather Unit	Keeler Mtn	48° 19.239' N	115° 53.677' W
Other	RAMS-9	48° 21.797' N	115° 56.127' W
Repeater	A/C Link	48° 19.267' N	115° 53.615' W
Repeater	CHD 7	48° 19.187' N	115° 53.677' W
Repeater	CHD 8	48° 19.192' N	115° 53.511' W
Staging Area	Keeler Staging	48° 21.130' N	115° 53.111' W
Water Source	Water Source	48° 20.975' N	115° 53.667' W
Water Source	Water Source	48° 20.643' N	115° 54.151' W
Water Source	Water Source	48° 21.967' N	115° 58.987' W
Water Source	Water Source	48° 20.866' N	115° 54.651' W
Water Source	Water Source	48° 19.909' N	115° 00.727' W
Water Source	Water Source	48° 21.317' N	115° 01.017' W

