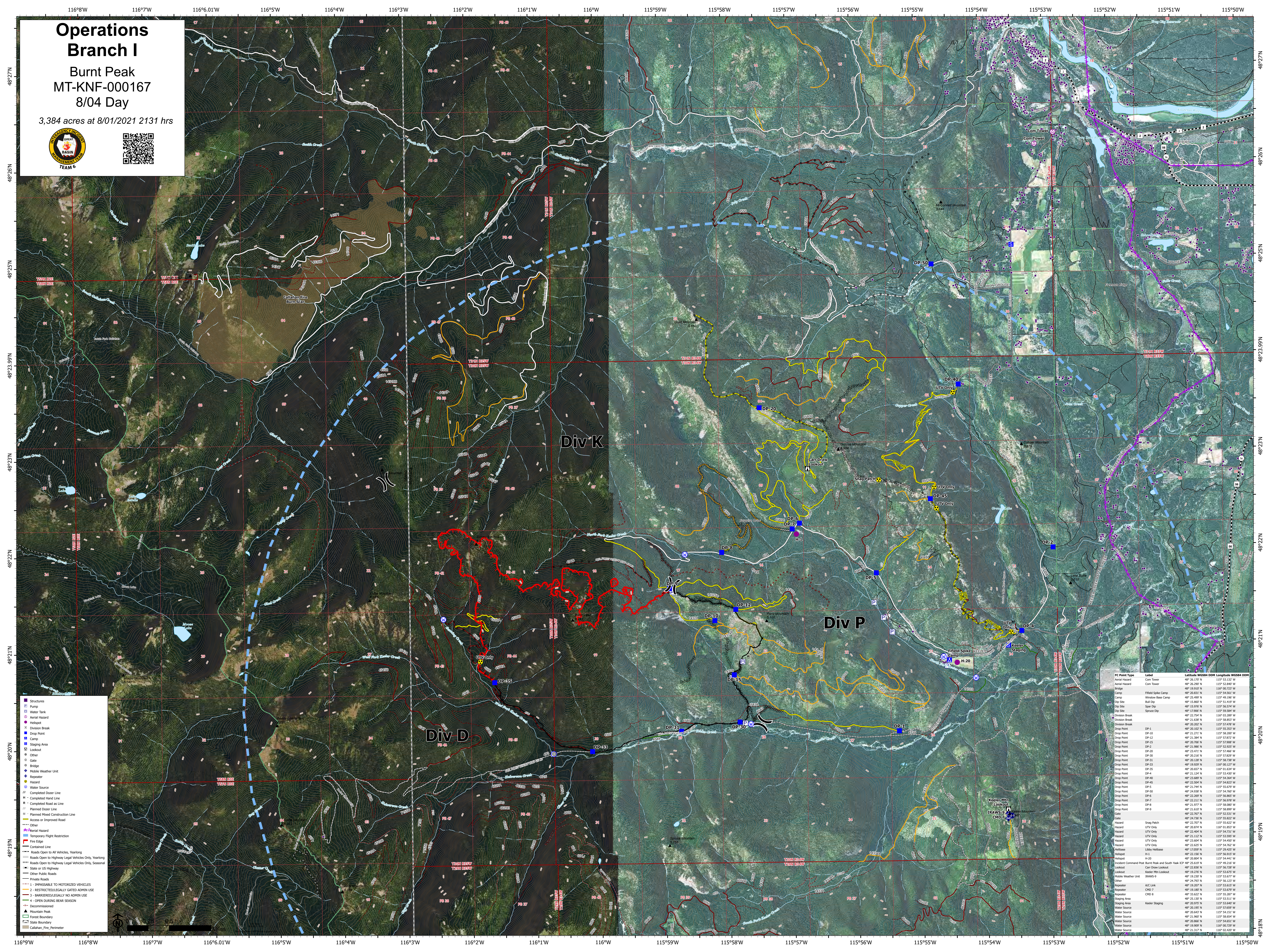


Operations Branch I

Burnt Peak
MT-KNF-000167
8/04 Day

3,384 acres at 8/01/2021 2131 hrs



IC Point Type	Label	Latitude	Longitude	DNM	WGS84
Aerial Hazard	Com Tower	48° 26.172' N	115° 51.512' W		
Aerial Hazard	Com Tower	48° 26.292' N	115° 52.842' W		
Bridge		48° 18.022' N	115° 02.022' W		
Camp	Field Spike Camp	48° 20.811' N	115° 54.561' W		
Camp	Window Base Camp	48° 25.492' N	115° 49.192' W		
Camp	Ball Dip	48° 18.862' N	115° 51.512' W		
Dip Site	Spot Dip	48° 15.976' N	115° 56.524' W		
Dip Site	Spruce Dip	48° 12.966' N	115° 52.916' W		
Division Break		48° 23.754' N	115° 03.289' W		
Division Break		48° 21.639' N	115° 58.853' W		
Drop Point		48° 20.102' N	115° 55.353' W		
Drop Point	DP-1	48° 21.271' N	115° 58.202' W		
Drop Point	DP-12	48° 21.381' N	115° 57.072' W		
Drop Point	DP-15	48° 20.706' N	115° 57.008' W		
Drop Point	DP-2	48° 21.866' N	115° 52.822' W		
Drop Point	DP-20	48° 21.471' N	115° 57.466' W		
Drop Point	DP-30	48° 20.216' N	115° 57.822' W		
Drop Point	DP-31	48° 21.126' N	115° 58.782' W		
Drop Point	DP-33	48° 19.929' N	115° 00.122' W		
Drop Point	DP-35	48° 20.652' N	115° 01.634' W		
Drop Point	DP-4	48° 21.124' N	115° 53.822' W		
Drop Point	DP-40	48° 21.689' N	115° 54.364' W		
Drop Point	DP-45	48° 21.504' N	115° 54.822' W		
Drop Point	DP-5	48° 21.741' N	115° 54.702' W		
Drop Point	DP-50	48° 24.938' N	115° 54.702' W		
Drop Point	DP-6	48° 21.289' N	115° 56.852' W		
Drop Point	DP-7	48° 22.211' N	115° 56.978' W		
Drop Point	DP-8	48° 21.972' N	115° 58.082' W		
Drop Point	DP-9	48° 21.012' N	115° 54.082' W		
Gate		48° 22.762' N	115° 52.511' W		
Gate		48° 24.738' N	115° 58.822' W		
Hazard	Spot Patch	48° 21.702' N	115° 55.822' W		
Hazard	UTV Only	48° 20.874' N	115° 01.852' W		
Hazard	UTV Only	48° 21.404' N	115° 54.712' W		
Hazard	UTV Only	48° 21.112' N	115° 53.592' W		
Hazard	UTV Only	48° 21.404' N	115° 54.602' W		
Hazard	UTV Only	48° 21.289' N	115° 54.702' W		
Helibase	Libby Helibase	48° 17.059' N	115° 29.425' W		
Helispot	H-3	48° 22.156' N	115° 56.812' W		
Helispot	H-20	48° 21.804' N	115° 54.082' W		
Incident Command Post	Burnt Peak and South Yaak ICP	48° 21.619' N	115° 49.216' W		
Lookout	Can Draw Lookout	48° 21.381' N	115° 57.072' W		
Lookout	Kestler Mtn Lookout	48° 19.276' N	115° 53.822' W		
Mobile Weather Unit	BRAMS-9	48° 19.232' N	115° 53.822' W		
Repeater	CH0 7	48° 21.012' N	115° 54.082' W		
Repeater	CH0 8	48° 19.262' N	115° 53.815' W		
Repeater	CH0 9	48° 19.182' N	115° 53.822' W		
Repeater	CH0 10	48° 19.182' N	115° 53.822' W		
Staging Area	Kestler Staging	48° 21.130' N	115° 53.511' W		
Water Source	Water Source	48° 20.972' N	115° 53.822' W		
Water Source	Water Source	48° 20.642' N	115° 54.151' W		
Water Source	Water Source	48° 21.902' N	115° 58.514' W		
Water Source	Water Source	48° 20.866' N	115° 54.651' W		
Water Source	Water Source	48° 19.909' N	115° 00.722' W		
Water Source	Water Source	48° 19.312' N	115° 48.402' W		