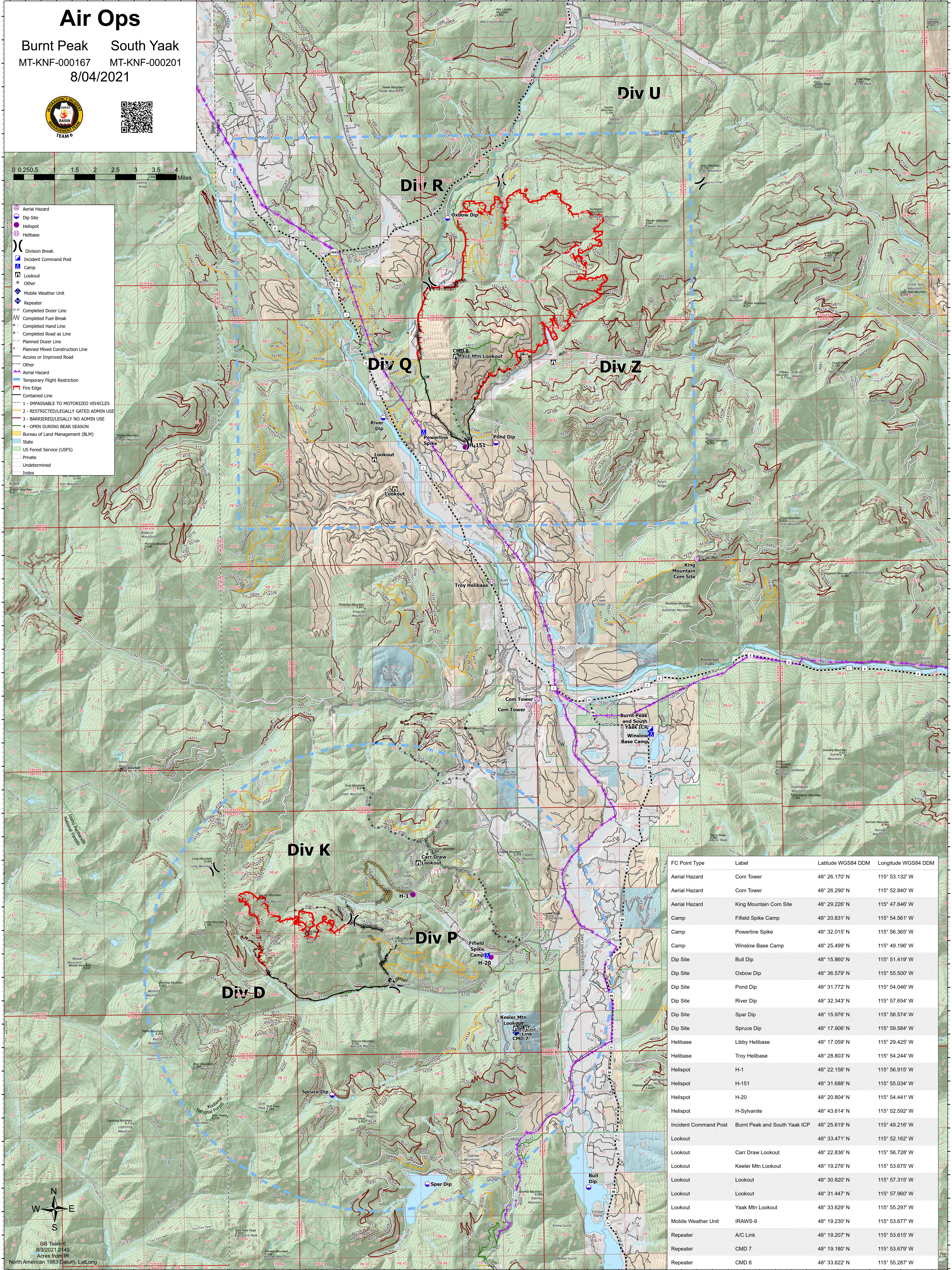


# Air Ops

Burnt Peak South Yaak  
 MT-KNF-000167 MT-KNF-000201  
 8/04/2021



- Aerial Hazard
- Dip Site
- Helispot
- Helibase
- Division Break
- Incident Command Post
- Camp
- Lookout
- Other
- Mobile Weather Unit
- Repeater
- Completed Dozer Line
- Completed Fuel Break
- Completed Hand Line
- Completed Road as Line
- Planned Dozer Line
- Planned Mixed Construction Line
- Access or Improved Road
- Other
- Aerial Hazard
- Temporary Flight Restriction
- Fire Edge
- Contained Line
- 1 - IMPASSABLE TO MOTORIZED VEHICLES
- 2 - RESTRICTED/LEGALLY GATED ADMIN USE
- 3 - BARRIRED/LEGALLY NO ADMIN USE
- 4 - OPEN DURING BEAR SEASON
- Bureau of Land Management (BLM)
- State
- US Forest Service (USFS)
- Private
- Undetermined
- Index



| FC Point Type         | Label                         | Latitude WGS84 DDM | Longitude WGS84 DDM |
|-----------------------|-------------------------------|--------------------|---------------------|
| Aerial Hazard         | Com Tower                     | 48° 26.170' N      | 115° 53.132' W      |
| Aerial Hazard         | Com Tower                     | 48° 26.290' N      | 115° 52.840' W      |
| Aerial Hazard         | King Mountain Com Site        | 48° 29.226' N      | 115° 47.646' W      |
| Camp                  | Fiffeld Spike Camp            | 48° 20.831' N      | 115° 54.561' W      |
| Camp                  | Powerline Spike               | 48° 32.015' N      | 115° 56.365' W      |
| Camp                  | Winslow Base Camp             | 48° 25.499' N      | 115° 49.196' W      |
| Dip Site              | Bull Dip                      | 48° 15.860' N      | 115° 51.419' W      |
| Dip Site              | Oxbow Dip                     | 48° 36.579' N      | 115° 55.500' W      |
| Dip Site              | Pond Dip                      | 48° 31.772' N      | 115° 54.046' W      |
| Dip Site              | River Dip                     | 48° 32.343' N      | 115° 57.654' W      |
| Dip Site              | Spar Dip                      | 48° 15.976' N      | 115° 56.574' W      |
| Dip Site              | Spruce Dip                    | 48° 17.906' N      | 115° 59.584' W      |
| Helibase              | Libby Helibase                | 48° 17.059' N      | 115° 29.425' W      |
| Helibase              | Troy Helibase                 | 48° 28.803' N      | 115° 54.244' W      |
| Helispot              | H-1                           | 48° 22.156' N      | 115° 56.915' W      |
| Helispot              | H-151                         | 48° 31.688' N      | 115° 55.034' W      |
| Helispot              | H-20                          | 48° 20.804' N      | 115° 54.441' W      |
| Helispot              | H-Sylvania                    | 48° 43.614' N      | 115° 52.592' W      |
| Incident Command Post | Burnt Peak and South Yaak ICP | 48° 25.619' N      | 115° 49.216' W      |
| Lookout               | Carr Draw Lookout             | 48° 22.836' N      | 115° 56.728' W      |
| Lookout               | Keeler Mtn Lookout            | 48° 19.276' N      | 115° 53.675' W      |
| Lookout               | Lookout                       | 48° 30.820' N      | 115° 57.315' W      |
| Lookout               | Lookout                       | 48° 31.447' N      | 115° 57.960' W      |
| Lookout               | Yaak Mtn Lookout              | 48° 33.629' N      | 115° 55.297' W      |
| Mobile Weather Unit   | IRAWS-9                       | 48° 19.230' N      | 115° 53.677' W      |
| Repeater              | A/C Link                      | 48° 19.207' N      | 115° 53.615' W      |
| Repeater              | CMD 7                         | 48° 19.180' N      | 115° 53.679' W      |
| Repeater              | CMD 8                         | 48° 33.622' N      | 115° 55.287' W      |

GB Team 6  
 8/3/2021 2145  
 Acres from IR  
 North American 1983 Datum, Lat/Long