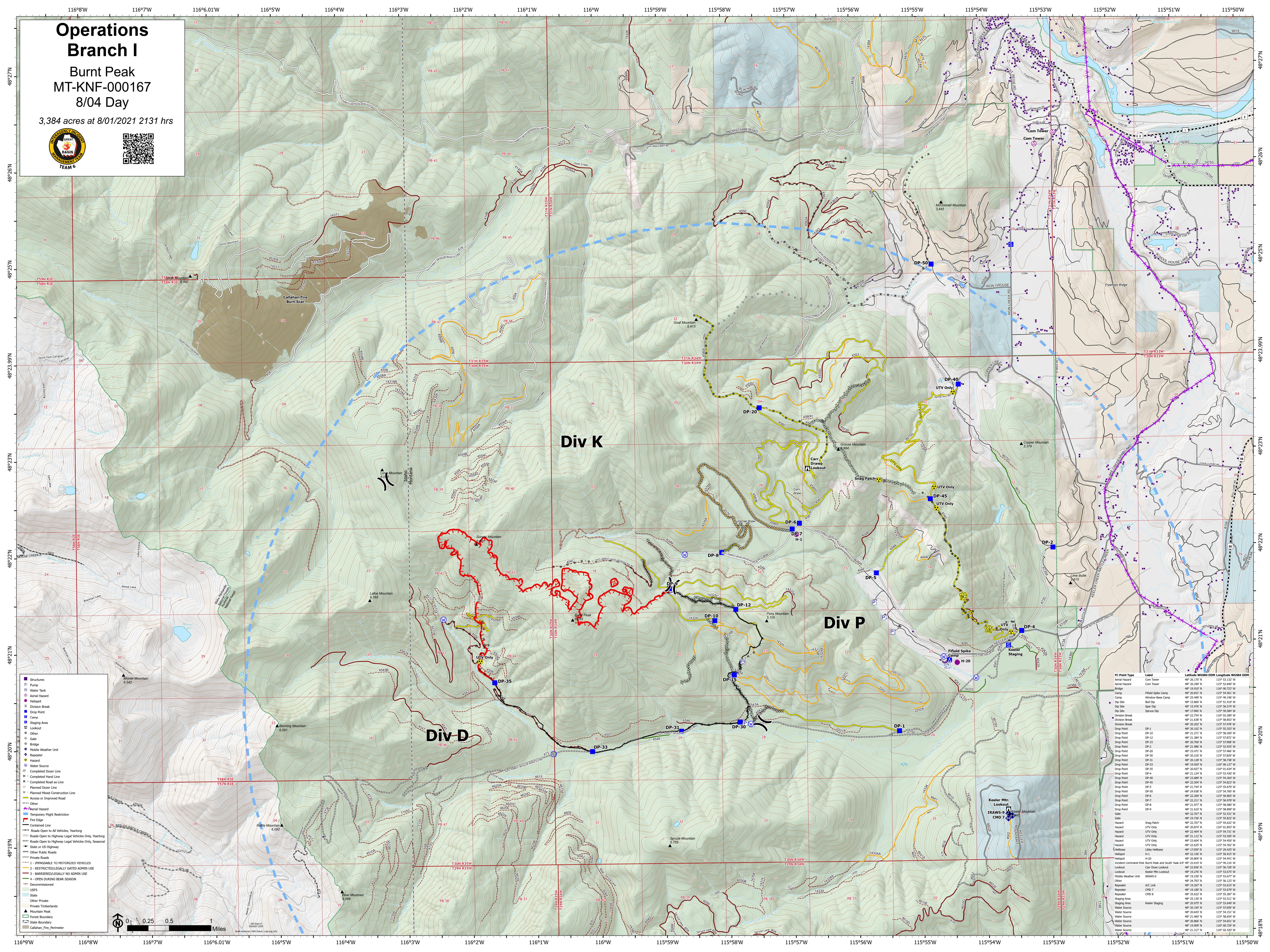


Operations Branch I

Burnt Peak
MT-KNF-000167
8/04 Day

3,384 acres at 8/01/2021 2131 hrs



- Structures
- Pump
- Water Tank
- Aerial Hazard
- Helipad
- Division Break
- Drop Point
- Camp
- Staging Area
- Lookout
- Other
- Hazard
- Bridge
- Mobile Weather Unit
- Repeater
- Water Source
- Completed Dozer Line
- Completed Hand Line
- Completed Road as Line
- Planned Dozer Line
- Planned Mixed Construction Line
- Access or Improved Road
- Other
- Hazard
- Temporary Flight Restriction
- Fire Edge
- Contoured Line
- Roads Open to All Vehicles, Yearlong
- Roads Open to Highway Legal Vehicles Only, Yearlong
- Roads Open to Highway Legal Vehicles Only, Seasonal
- State or US Highway
- Other Public Roads
- Private Roads
- IMPASSABLE TO MOTORIZED VEHICLES
- RESTRICTED/LEGALLY GATED ADMIN USE
- BARREN/ILLEGALLY NO ADMIN USE
- OPEN DURING BEAR SEASON
- Decommissioned
- USFS
- State
- Other Private
- Private Timberlands
- Mountain Peak
- Forest Boundary
- State Boundary
- Callahan_Fire_Perimeter

IC Point Type	Label	NAD83 UTM Zone 18N Easting	NAD83 UTM Zone 18N Northing	
Aerial Hazard	Com Tower	487 26 177 N	1157 53 132 N	
Aerial Hazard	Com Tower	487 26 297 N	1157 52 847 W	
Aerial Hazard	Com Tower	487 26 102 N	1157 49 027 W	
Camp	Field Spike Camp	487 26 831 N	1157 54 561 W	
Camp	Window Base Camp	487 25 497 N	1157 49 190 W	
Camp	Butt Dip	487 25 807 N	1157 53 517 W	
Dip Site	Spot Dip	487 25 976 N	1157 56 524 W	
Dip Site	Spruce Dip	487 23 968 N	1157 59 584 W	
Dip Site	Spruce Dip	487 23 754 N	1157 03 289 W	
Division Break	Division Break	487 23 639 N	1157 58 853 W	
Division Break	Division Break	487 26 202 N	1157 57 476 W	
Drop Point	DP-1	487 26 102 N	1157 53 393 W	
Drop Point	DP-10	487 23 271 N	1157 58 207 W	
Drop Point	DP-12	487 23 381 N	1157 57 072 W	
Drop Point	DP-15	487 26 706 N	1157 57 908 W	
Drop Point	DP-2	487 23 986 N	1157 58 825 W	
Drop Point	DP-30	487 23 473 N	1157 57 662 W	
Drop Point	DP-30	487 26 216 N	1157 57 827 W	
Drop Point	DP-31	487 26 128 N	1157 58 784 W	
Drop Point	DP-33	487 19 929 N	1157 00 127 W	
Drop Point	DP-35	487 26 057 N	1157 01 434 W	
Drop Point	DP-4	487 23 124 N	1157 53 037 W	
Drop Point	DP-40	487 23 689 N	1157 54 364 W	
Drop Point	DP-45	487 23 504 N	1157 54 823 W	
Drop Point	DP-5	487 23 747 N	1157 59 075 W	
Drop Point	DP-50	487 24 538 N	1157 54 700 W	
Drop Point	DP-6	487 23 289 N	1157 58 857 W	
Drop Point	DP-7	487 22 211 N	1157 56 978 W	
Drop Point	DP-8	487 23 977 N	1157 58 087 W	
Drop Point	DP-9	487 23 025 N	1157 58 987 W	
Gate	Gate	487 22 767 N	1157 52 311 W	
Gate	Gate	487 24 736 N	1157 58 822 W	
Hazard	UTV Only	487 26 874 N	1157 01 857 W	
Hazard	UTV Only	487 23 406 N	1157 54 711 W	
Hazard	UTV Only	487 21 112 N	1157 53 590 W	
Hazard	UTV Only	487 23 404 N	1157 54 450 W	
Hazard	UTV Only	487 23 289 N	1157 58 857 W	
Helibase	Libby Helibase	487 17 059 N	1157 29 425 W	
Helipad	H-3	487 22 136 N	1157 56 813 W	
Helipad	H-20	487 23 707 N	1157 54 417 W	
Incident Command Post	Burnt Peak and South Vaik ICP	487 24 619 N	1157 49 116 W	
Lookout	Carl Draw Lookout	487 23 808 N	1157 58 788 W	
Lookout	Keeler Mtn Lookout	487 19 276 N	1157 53 470 W	
Other	Mobile Weather Unit	BRWS-5	487 19 237 N	1157 53 677 W
Other	BRWS-9	487 23 797 N	1157 56 017 W	
Repeater	A/C Link	487 19 207 N	1157 53 815 W	
Repeater	CHD 7	487 19 187 N	1157 53 677 W	
Repeater	CHD 8	487 19 027 N	1157 53 417 W	
Staging Area	Keeler Staging	487 23 130 N	1157 53 311 W	
Water Source	Water Source	487 26 975 N	1157 53 840 W	
Water Source	Water Source	487 26 647 N	1157 54 151 W	
Water Source	Water Source	487 23 907 N	1157 58 578 W	
Water Source	Water Source	487 20 866 N	1157 54 851 W	
Water Source	Water Source	487 19 909 N	1157 00 729 W	
Water Source	Water Source	487 21 317 N	1157 01 317 W	

