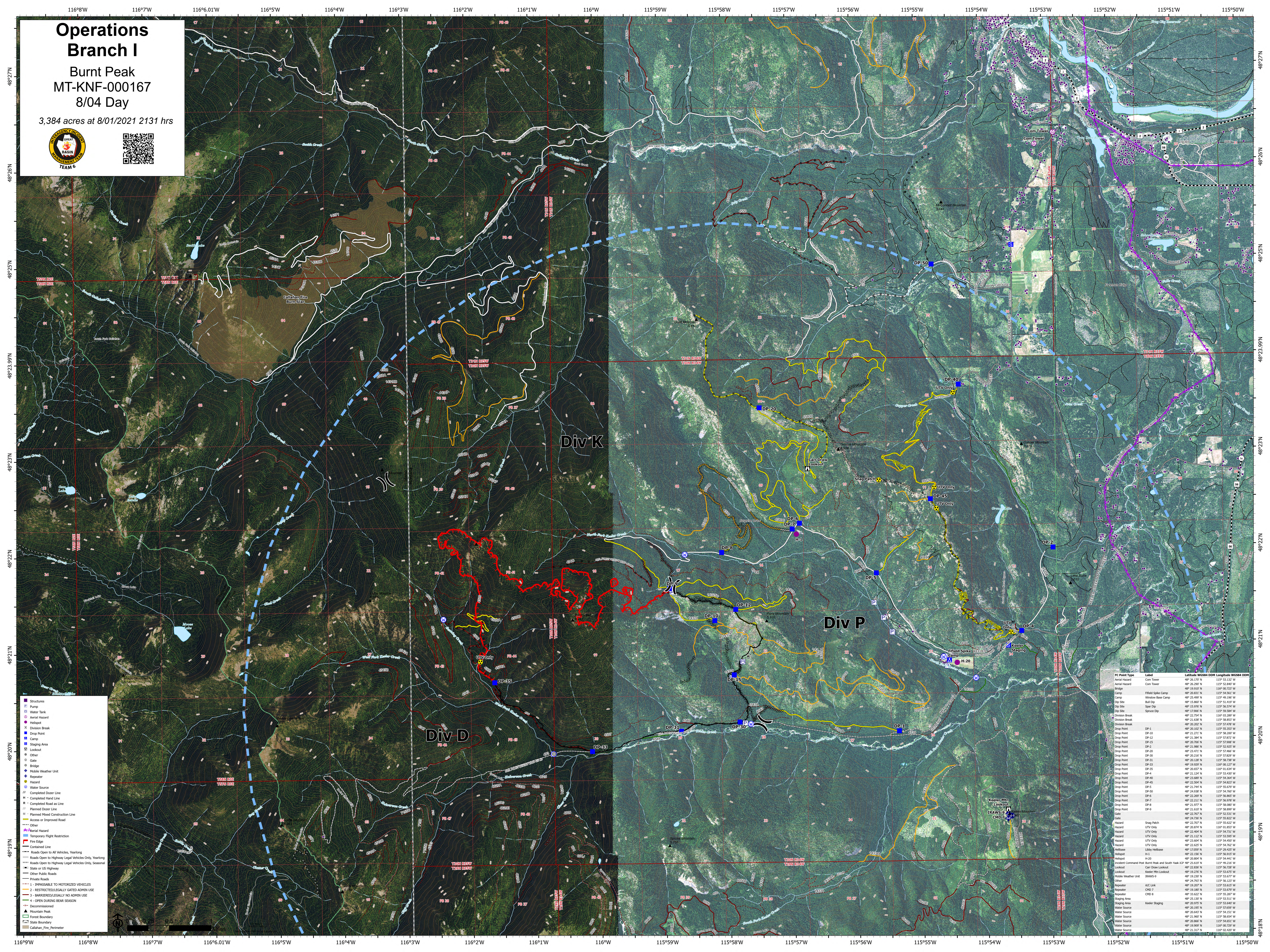


Operations Branch I

Burnt Peak
MT-KNF-000167
8/04 Day

3,384 acres at 8/01/2021 2131 hrs



- Structures
- Pump
- Water Tank
- Aerial Hazard
- Helipoint
- Division Break
- Drop Point
- Camp Point
- Staging Area
- Lookout
- Other
- Gate
- Bridge
- Mobile Weather Unit
- Repeater
- Hazard
- Water Source
- Completed Dozer Line
- Completed Hand Line
- Completed Road as Line
- Planned Dozer Line
- Planned Hand Line
- Planned Road as Line
- Planned Mixed Construction Line
- Access or Improved Road
- Other
- Aerial Hazard
- Temporary Flight Restriction
- Fire Edge
- Contained Line
- Roads Open to All Vehicles, Yearlong
- Roads Open to Highway Legal Vehicles Only, Yearlong
- Roads Open to Highway Legal Vehicles Only, Seasonal
- State or US Highway
- Other Public Roads
- Private Roads
- 1 - IMPASSABLE TO MOTORIZED VEHICLES
- 2 - RESTRICTED/LEGALLY GATED ADMIN USE
- 3 - BARRIERS/LEGALLY NO ADMIN USE
- 4 - OPEN DURING BEAR SEASON
- Decommissioned
- Mountain Peak
- Town Boundary
- State Boundary
- Catalina_Fire_Perimeter

| IC Point Type | Label | Latitude | Longitude | DOM | Length | WGS84 | DOM |
|-----------------------|-------------------------------|---------------|----------------|----------------|--------|-------|-----|
| Aerial Hazard | Com Tower | 48° 26.172' N | 115° 51.132' W | 115° 51.132' W | | | |
| Aerial Hazard | Com Tower | 48° 26.297' N | 115° 52.847' W | 115° 52.847' W | | | |
| Aerial Hazard | Com Tower | 48° 19.015' N | 116° 00.517' W | 116° 00.517' W | | | |
| Camp | Field Spike Camp | 48° 20.811' N | 115° 54.561' W | 115° 54.561' W | | | |
| Camp | Window Base Camp | 48° 25.497' N | 115° 49.150' W | 115° 49.150' W | | | |
| Drop Site | Butt Dip | 48° 15.807' N | 115° 55.517' W | 115° 55.517' W | | | |
| Drop Site | Spot Dip | 48° 15.976' N | 115° 56.574' W | 115° 56.574' W | | | |
| Drop Site | Spread Dip | 48° 15.966' N | 115° 55.517' W | 115° 55.517' W | | | |
| Division Break | | 48° 23.754' N | 115° 03.289' W | 115° 03.289' W | | | |
| Division Break | | 48° 21.639' N | 115° 58.853' W | 115° 58.853' W | | | |
| Division Break | | 48° 20.202' N | 115° 57.476' W | 115° 57.476' W | | | |
| Drop Point | DP-1 | 48° 20.102' N | 115° 55.353' W | 115° 55.353' W | | | |
| Drop Point | DP-10 | 48° 21.271' N | 115° 58.207' W | 115° 58.207' W | | | |
| Drop Point | DP-12 | 48° 21.381' N | 115° 57.017' W | 115° 57.017' W | | | |
| Drop Point | DP-15 | 48° 20.706' N | 115° 57.008' W | 115° 57.008' W | | | |
| Drop Point | DP-2 | 48° 21.880' N | 115° 58.825' W | 115° 58.825' W | | | |
| Drop Point | DP-20 | 48° 21.471' N | 115° 57.466' W | 115° 57.466' W | | | |
| Drop Point | DP-30 | 48° 20.216' N | 115° 57.827' W | 115° 57.827' W | | | |
| Drop Point | DP-31 | 48° 20.138' N | 115° 58.788' W | 115° 58.788' W | | | |
| Drop Point | DP-33 | 48° 19.929' N | 116° 00.127' W | 116° 00.127' W | | | |
| Drop Point | DP-35 | 48° 20.657' N | 116° 01.634' W | 116° 01.634' W | | | |
| Drop Point | DP-4 | 48° 21.124' N | 115° 53.537' W | 115° 53.537' W | | | |
| Drop Point | DP-40 | 48° 21.689' N | 115° 54.364' W | 115° 54.364' W | | | |
| Drop Point | DP-45 | 48° 21.504' N | 115° 54.823' W | 115° 54.823' W | | | |
| Drop Point | DP-5 | 48° 21.745' N | 115° 55.917' W | 115° 55.917' W | | | |
| Drop Point | DP-50 | 48° 24.938' N | 115° 54.707' W | 115° 54.707' W | | | |
| Drop Point | DP-6 | 48° 21.289' N | 115° 56.867' W | 115° 56.867' W | | | |
| Drop Point | DP-7 | 48° 22.211' N | 115° 56.978' W | 115° 56.978' W | | | |
| Drop Point | DP-8 | 48° 21.977' N | 115° 58.087' W | 115° 58.087' W | | | |
| Drop Point | DP-9 | 48° 21.015' N | 115° 58.087' W | 115° 58.087' W | | | |
| Gate | | 48° 22.767' N | 115° 52.511' W | 115° 52.511' W | | | |
| Gate | | 48° 24.736' N | 115° 58.822' W | 115° 58.822' W | | | |
| Hazard | UTV Only | 48° 21.707' N | 115° 58.822' W | 115° 58.822' W | | | |
| Hazard | UTV Only | 48° 20.874' N | 116° 01.853' W | 116° 01.853' W | | | |
| Hazard | UTV Only | 48° 21.404' N | 115° 59.711' W | 115° 59.711' W | | | |
| Hazard | UTV Only | 48° 21.112' N | 115° 53.595' W | 115° 53.595' W | | | |
| Hazard | UTV Only | 48° 21.404' N | 115° 54.657' W | 115° 54.657' W | | | |
| Hazard | UTV Only | 48° 21.289' N | 115° 56.867' W | 115° 56.867' W | | | |
| Helibase | Libby Helibase | 48° 17.059' N | 115° 29.425' W | 115° 29.425' W | | | |
| Helibase | | 48° 22.136' N | 115° 56.815' W | 115° 56.815' W | | | |
| Helipoint | H-1 | 48° 22.136' N | 115° 56.815' W | 115° 56.815' W | | | |
| Helipoint | H-2 | 48° 22.136' N | 115° 56.815' W | 115° 56.815' W | | | |
| Incident Command Post | Burnt Peak and South Yank ICP | 48° 24.619' N | 115° 49.116' W | 115° 49.116' W | | | |
| Lookout | Car Draw Lookout | 48° 23.838' N | 115° 56.758' W | 115° 56.758' W | | | |
| Lookout | Keeler Mtn Lookout | 48° 19.276' N | 115° 53.670' W | 115° 53.670' W | | | |
| Mobile Weather Unit | BRW5-9 | 48° 19.237' N | 115° 53.677' W | 115° 53.677' W | | | |
| Other | | 48° 19.705' N | 115° 56.517' W | 115° 56.517' W | | | |
| Repeater | A/C Link | 48° 19.207' N | 115° 53.615' W | 115° 53.615' W | | | |
| Repeater | CHO-7 | 48° 19.187' N | 115° 53.677' W | 115° 53.677' W | | | |
| Repeater | CHO-8 | 48° 19.187' N | 115° 53.677' W | 115° 53.677' W | | | |
| Staging Area | | 48° 21.130' N | 115° 53.511' W | 115° 53.511' W | | | |
| Staging Area | Keeler Staging | 48° 20.975' N | 115° 53.640' W | 115° 53.640' W | | | |
| Water Source | | 48° 21.967' N | 115° 58.514' W | 115° 58.514' W | | | |
| Water Source | | 48° 20.643' N | 115° 54.151' W | 115° 54.151' W | | | |
| Water Source | | 48° 21.967' N | 115° 58.514' W | 115° 58.514' W | | | |
| Water Source | | 48° 20.866' N | 115° 54.651' W | 115° 54.651' W | | | |
| Water Source | | 48° 19.909' N | 116° 00.720' W | 116° 00.720' W | | | |
| Water Source | | 48° 21.317' N | 115° 49.402' W | 115° 49.402' W | | | |