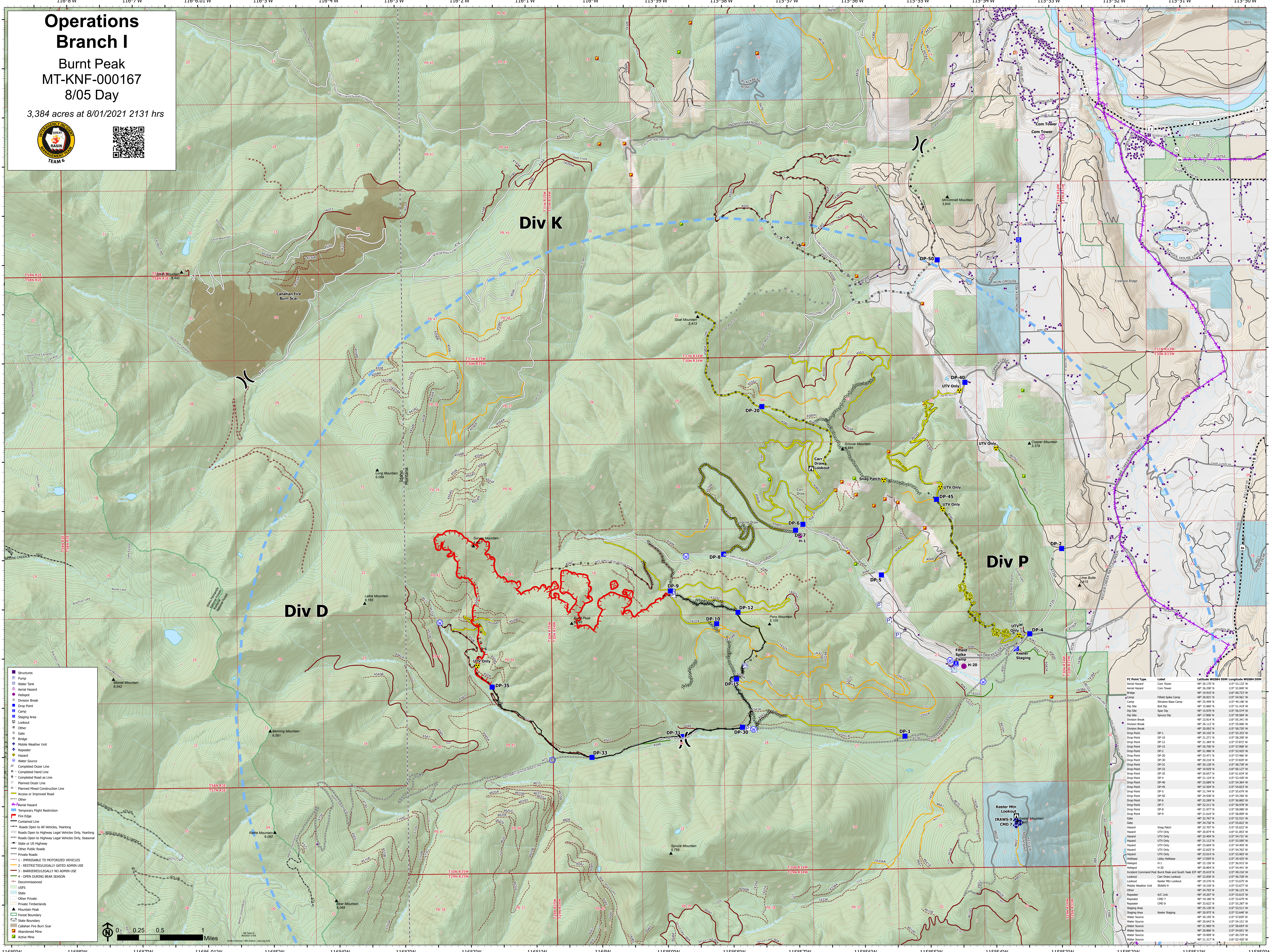


Operations Branch I

Burnt Peak
MT-KNF-000167
8/05 Day

3,384 acres at 8/01/2021 2131 hrs



- Structures
- Pump
- Water Tank
- Aerial Hazard
- Hilltop
- Division Break
- Drop Point
- Camp
- Staging Area
- Lookout
- Other
- Gate
- Bridge
- Mobile Weather Unit
- Repeater
- Hazard
- Water Source
- Completed Dozer Line
- H - Completed Hand Line
- R - Completed Road as Line
- Planned Dozer Line
- Planned Hand Construction Line
- Access or Improved Road
- Other
- Temporary Flight Restriction
- Fire Edge
- Contained Line
- Roads Open to All Vehicles, Yearling
- Roads Open to Highway Legal Vehicles Only, Yearling
- Roads Open to Highway Legal Vehicles Only, Seasonal
- State or US Highway
- Other Public Roads
- Private Roads
- 1 - UNKOWNABLE TO MOTORIZED VEHICLES
- 2 - RESTRICTED/LEGALLY GATED ADMIN USE
- 3 - OPEN DURING BEAR SEASON
- Decommissioned
- USFS
- State
- Other Private
- Private Timberlands
- Mountain Peak
- Forest Boundary
- State Boundary
- Callahan Fire Burn Scar
- Abandoned Mine
- Active Mine

FC Point Type	Label	Latitude	Longitude
Aerial Hazard	Com Tower	48° 26.170' N	115° 53.132' W
Aerial Hazard	Com Tower	48° 26.200' N	115° 52.840' W
Aerial Hazard	Com Tower	48° 26.910' N	115° 00.020' W
Camp	Filled Spike Camp	48° 26.832' N	115° 54.561' W
Camp	Warden Base Camp	48° 25.409' N	115° 49.190' W
Dip Site	Bad Dip	48° 15.860' N	115° 51.517' W
Dip Site	Spur Dip	48° 15.978' N	115° 56.574' W
Dip Site	Spur Dip	48° 17.968' N	115° 55.584' W
Dip Site	Spur Dip	48° 23.814' N	116° 05.341' W
Division Break		48° 26.112' N	115° 55.000' W
Division Break		48° 26.802' N	115° 56.700' W
Drop Point	DP-1	48° 26.102' N	115° 55.303' W
Drop Point	DP-10	48° 21.271' N	115° 58.307' W
Drop Point	DP-12	48° 21.364' N	115° 57.872' W
Drop Point	DP-15	48° 20.706' N	115° 57.908' W
Drop Point	DP-2	48° 21.965' N	115° 52.827' W
Drop Point	DP-20	48° 23.472' N	115° 57.466' W
Drop Point	DP-30	48° 20.214' N	115° 57.827' W
Drop Point	DP-31	48° 20.128' N	115° 58.708' W
Drop Point	DP-33	48° 19.829' N	116° 00.127' W
Drop Point	DP-35	48° 20.627' N	115° 58.214' W
Drop Point	DP-4	48° 21.124' N	115° 53.430' W
Drop Point	DP-40	48° 23.889' N	115° 54.564' W
Drop Point	DP-45	48° 23.506' N	115° 54.827' W
Drop Point	DP-5	48° 21.744' N	115° 55.679' W
Drop Point	DP-6	48° 24.038' N	115° 54.760' W
Drop Point	DP-6	48° 23.269' N	115° 56.860' W
Drop Point	DP-7	48° 22.211' N	115° 56.978' W
Drop Point	DP-8	48° 21.077' N	115° 58.900' W
Drop Point	DP-9	48° 21.610' N	115° 58.899' W
Gate		48° 22.767' N	115° 52.531' W
Gate		48° 24.776' N	115° 55.827' W
Gate		48° 22.707' N	115° 55.827' W
Hazard	UTV Only	48° 21.077' N	115° 58.900' W
Hazard	UTV Only	48° 22.404' N	115° 54.731' W
Hazard	UTV Only	48° 21.112' N	115° 53.980' W
Hazard	UTV Only	48° 21.424' N	115° 54.802' W
Hazard	UTV Only	48° 23.625' N	115° 54.762' W
Hazard	UTV Only	48° 23.014' N	115° 53.803' W
Hazard	UTV Only	48° 22.959' N	115° 59.827' W
Hazard	UTV Only	48° 22.156' N	115° 56.913' W
Hazard	UTV Only	48° 21.317' N	115° 55.281' W
Hazard	UTV Only	48° 21.610' N	115° 58.899' W
Incident Command Post	Burnt Peak and South Yank ICP	48° 25.619' N	115° 49.216' W
Lookout	Car Draw Lookout	48° 22.836' N	115° 56.728' W
Lookout	Keeler Mtn Lookout	48° 23.276' N	115° 53.827' W
Lookout	Keeler Mtn Lookout	48° 19.230' N	115° 53.677' W
Mobile Weather Unit	DRAWS-9	48° 26.793' N	115° 53.827' W
Other	A/C Link	48° 26.793' N	115° 53.827' W
Repeater	CHD 7	48° 19.180' N	115° 53.679' W
Repeater	CHD 8	48° 21.622' N	115° 55.281' W
Staging Area	Keeler Staging	48° 25.130' N	115° 53.311' W
Staging Area	Keeler Staging	48° 20.975' N	115° 53.840' W
Water Source		48° 19.195' N	115° 53.827' W
Water Source		48° 20.643' N	115° 54.511' W
Water Source		48° 21.968' N	115° 58.500' W
Water Source		48° 20.866' N	115° 54.651' W
Water Source		48° 19.809' N	116° 00.707' W
Water Source		48° 21.317' N	115° 55.827' W

