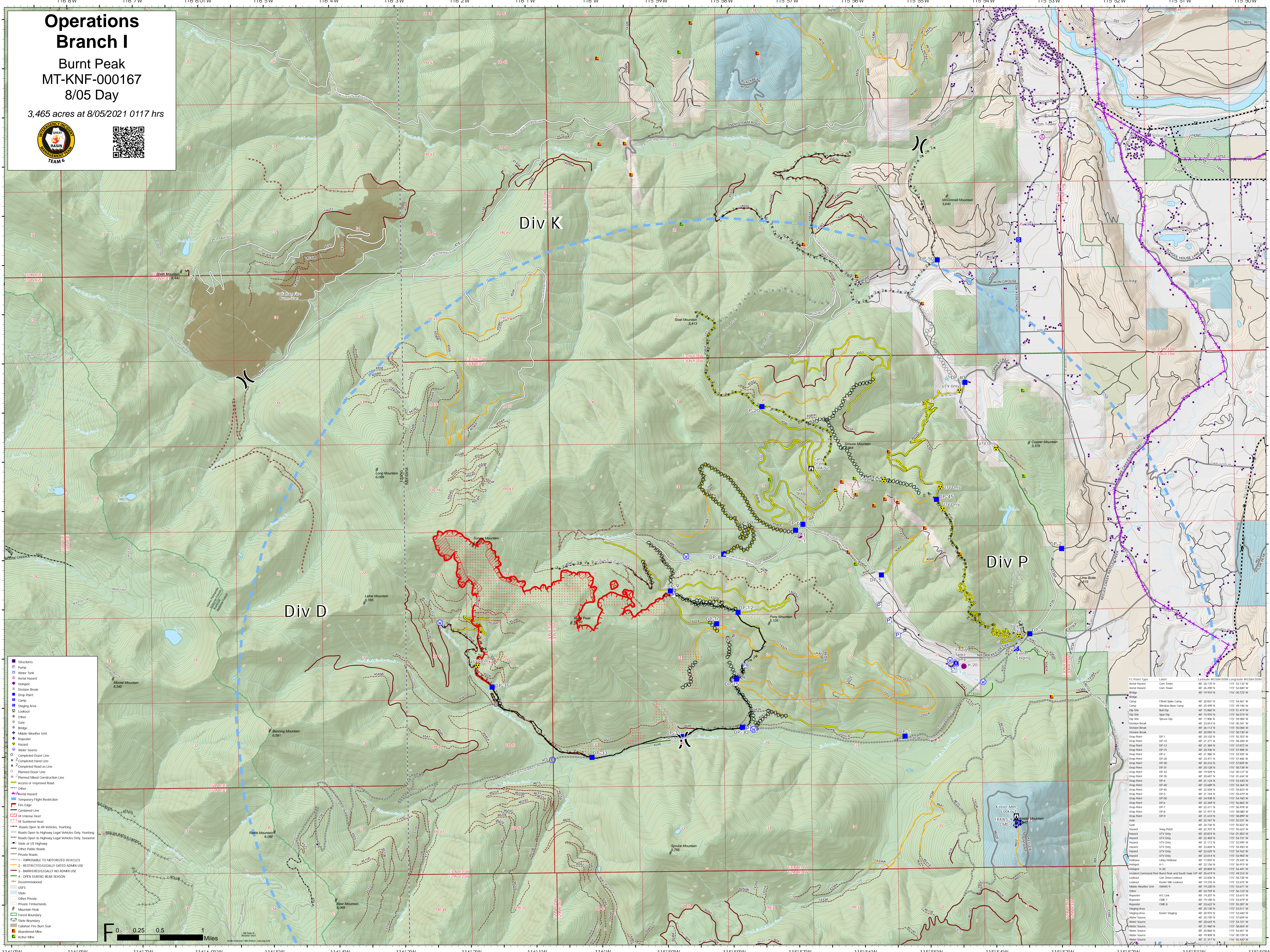


# Operations Branch I

Burnt Peak  
MT-KNF-000167  
8/05 Day

3,465 acres at 8/05/2021 0117 hrs



**Legend**

- Structures
- Pump
- Water Tank
- Aerial Helidrop
- Hotspot
- Division Break
- Drop Point
- Camp
- Staging Area
- Lookout
- Gate
- Other
- Bridge
- Mobile Weather Unit
- Repeater
- Hazard
- Water Source
- Completed Doser Line
- Planned Hand Line
- Planned Road as Line
- Planned Doser Line
- Planned Mixed Construction Line
- Access or Improved Road
- Other
- Neutral Hazard
- Temporary Flight Restriction
- Fire Edge
- Completed Line
- IR Intense Heat
- IR Scattered Heat
- Roads Open to All Vehicles, Yearling
- Roads Open to Highway Legal Vehicles Only, Yearling
- Roads Open to Highway Legal Vehicles Only, Seasonal
- State or US Highway
- Other Public Roads
- Private Roads
- 1 - INACCESSIBLE TO MOTORIZED VEHICLES
- 2 - RESTRICTED/LEGALLY GATED ADMIN USE
- 3 - BARRIERED/LEGALLY NO ADMIN USE
- 4 - OPEN DURING BEAR SEASON
- Decommissioned
- USFS
- State
- Other Private
- Private Timberlands
- Mixtana Peak
- Forest Boundary
- State Boundary
- Catfish Fire Burn Scar
- Abandoned Mine
- Active Mine

FC Point Type	Label	North	West
Aerial Helidrop	Com Tower	48° 26' 170" N	115° 53' 132" W
Aerial Helidrop	Com Tower	48° 26' 290" N	115° 52' 387" W
Bridge	Bridge	48° 19' 193" N	115° 52' 222" W
Camp	Elkhead Spine Camp	48° 20' 031" N	115° 54' 561" W
Camp	Wahau Base Camp	48° 25' 492" N	115° 49' 196" W
Drop Point	Bull Dip	48° 15' 802" N	115° 51' 419" W
Drop Point	Spout Dip	48° 15' 018" N	115° 56' 014" W
Drop Point	Spout Dip	48° 17' 068" N	115° 59' 584" W
Division Break	Division Break	48° 23' 812" N	115° 58' 381" W
Division Break	Division Break	48° 23' 812" N	115° 58' 381" W
Drop Point	DP-1	48° 20' 102" N	115° 56' 502" W
Drop Point	DP-10	48° 21' 271" N	115° 58' 203" W
Drop Point	DP-12	48° 20' 388" N	115° 53' 822" W
Drop Point	DP-15	48° 20' 102" N	115° 52' 925" W
Drop Point	DP-20	48° 21' 471" N	115° 52' 649" W
Drop Point	DP-30	48° 20' 250" N	115° 53' 809" W
Drop Point	DP-31	48° 20' 128" N	115° 58' 738" W
Drop Point	DP-33	48° 21' 929" N	115° 58' 517" W
Drop Point	DP-35	48° 20' 687" N	116° 01' 634" W
Drop Point	DP-40	48° 21' 124" N	115° 53' 622" W
Drop Point	DP-45	48° 23' 689" N	115° 54' 364" W
Drop Point	DP-45	48° 22' 594" N	115° 54' 923" W
Drop Point	DP-50	48° 21' 744" N	115° 54' 760" W
Drop Point	DP-50	48° 24' 938" N	115° 54' 760" W
Drop Point	DP-50	48° 22' 288" N	115° 54' 862" W
Drop Point	DP-7	48° 22' 211" N	115° 56' 918" W
Drop Point	DP-8	48° 21' 997" N	115° 56' 983" W
Drop Point	DP-9	48° 21' 648" N	115° 56' 989" W
Gate	Gate	48° 22' 767" N	115° 52' 031" W
Hazard	Sage Patch	48° 24' 736" N	115° 58' 622" W
Hazard	UTV Only	48° 20' 894" N	116° 01' 883" W
Hazard	UTV Only	48° 21' 112" N	115° 53' 995" W
Hazard	UTV Only	48° 22' 606" N	115° 54' 403" W
Hazard	UTV Only	48° 22' 606" N	115° 54' 403" W
Hazard	UTV Only	48° 23' 084" N	115° 53' 903" W
Hotspot	Libby Hotspot	48° 19' 059" N	115° 28' 432" W
Hotspot	H-1	48° 22' 150" N	115° 56' 915" W
Hotspot	H-20	48° 20' 894" N	115° 54' 461" W
Lookout	Indian Command Peak Burnt Peak and South Peak (2)	48° 21' 271" N	115° 52' 616" W
Lookout	Car Drive Lookout	48° 22' 858" N	115° 56' 738" W
Lookout	Keeler Mtn Lookout	48° 19' 271" N	115° 53' 616" W
Mobile Weather Unit	IRAWAS-9	48° 19' 230" N	115° 53' 617" W
Other	A/C Link	48° 24' 792" N	115° 56' 323" W
Repeater	Repeater	48° 19' 182" N	115° 53' 079" W
Repeater	Repeater	48° 19' 182" N	115° 53' 079" W
Staging Area	Staging Area	48° 25' 132" N	115° 53' 617" W
Water Source	Water Source	48° 20' 992" N	115° 53' 648" W
Water Source	Water Source	48° 20' 992" N	115° 53' 648" W
Water Source	Water Source	48° 20' 992" N	115° 53' 648" W
Water Source	Water Source	48° 20' 992" N	115° 53' 648" W
Water Source	Water Source	48° 20' 992" N	115° 53' 648" W
Water Source	Water Source	48° 20' 992" N	115° 53' 648" W

