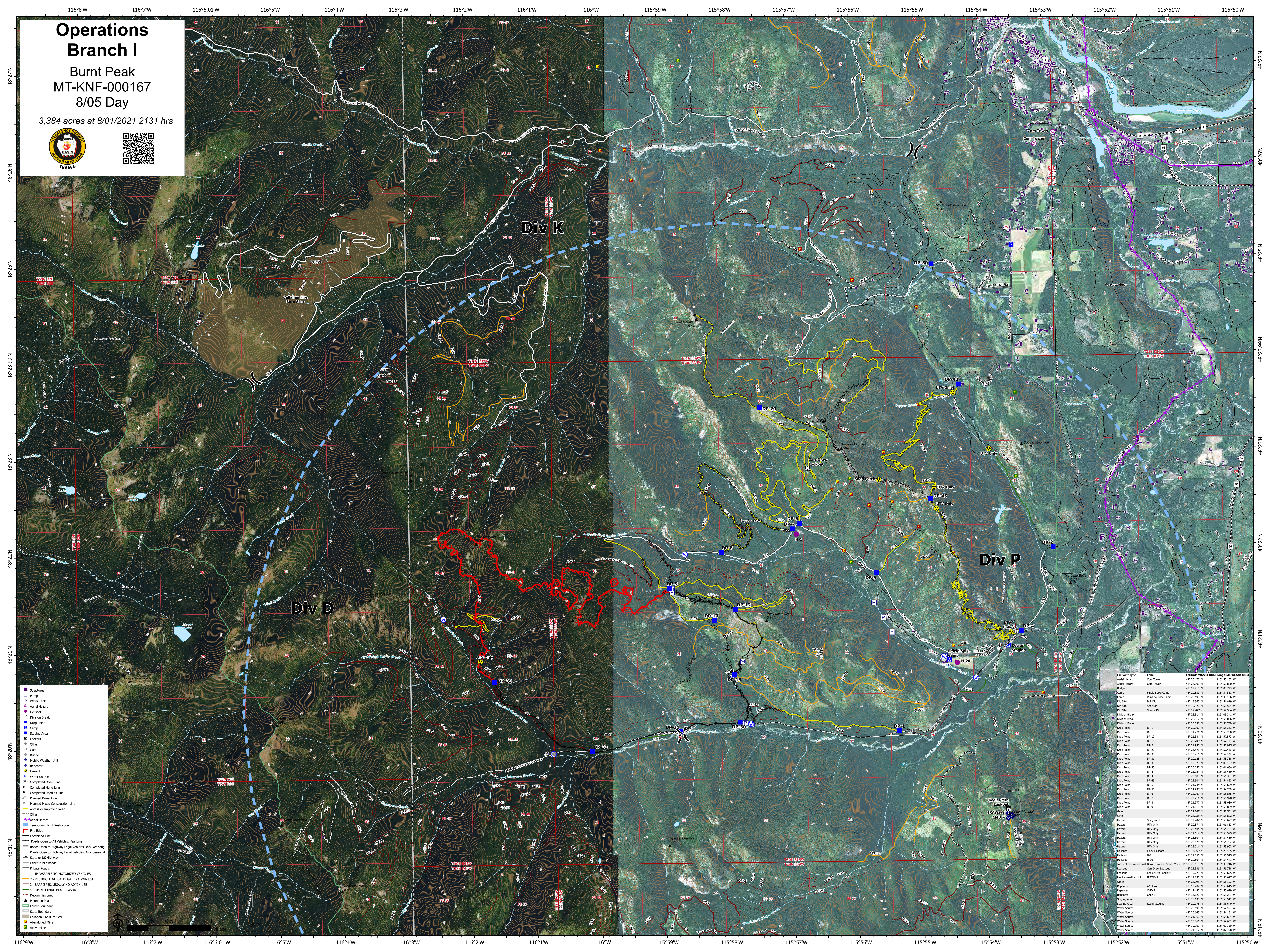


Operations Branch I

Burnt Peak
MT-KNF-000167
8/05 Day

3,384 acres at 8/01/2021 2131 hrs



- Structures
- Fire Task
- Water Tank
- Aerial Hazard
- Helipoint
- Division Break
- Drop Point
- Camp
- Staging Area
- Looking Area
- Other
- Gate
- Bridge
- Mobile Weather Unit
- Repeater
- Hazard
- Water Source
- Completed Doser Line
- Completed Hand Line
- R - Completed Road as Line
- Planned Doser Line
- Planned Hand Construction Line
- Access or Improved Road
- Other
- Aerial Hazard
- Temporary Flight Restriction
- Fire Edge
- Contained Line
- Roads Open to All Vehicles, Yearling
- Roads Open to Highway Legal Vehicles Only, Yearling
- Roads Open to Highway Legal Vehicles Only, Seasonal
- State or US Highway
- Other Public Roads
- Private Roads
- 1 - IMPASSIBLE TO MOTORIZED VEHICLES
- 2 - RESTRICTED/LEGALLY GATED ADMIN USE
- 3 - BARRIRED/LEGALLY NO ADMIN USE
- 4 - OPEN DURING BEAR SEASON
- Decommissioned
- Mountain Peak
- Forest Boundary
- State Boundary
- Callahan Fire Burn Scar
- Abandoned Mine
- Active Mine

FC Point Type	Label	Latitude	Longitude	Length	Width	DOM
Aerial Hazard	Com Tower	48° 26.170' N	115° 53.132' W			
Aerial Hazard	Com Tower	48° 26.260' N	115° 52.840' W			
Camp	Field Spike Camp	48° 26.817' N	115° 54.661' W			
Dip Site	Wildfire Base Camp	48° 25.499' N	115° 49.190' W			
Dip Site	Spur Dip	48° 15.978' N	115° 56.574' W			
Dip Site	Spur Dip	48° 15.968' N	115° 56.584' W			
Division Break		48° 23.814' N	116° 05.341' W			
Division Break		48° 26.112' N	115° 55.000' W			
Drop Point	DP-1	48° 26.102' N	115° 55.393' W			
Drop Point	DP-10	48° 24.271' N	115° 58.007' W			
Drop Point	DP-12	48° 21.344' N	115° 57.872' W			
Drop Point	DP-15	48° 20.706' N	115° 57.608' W			
Drop Point	DP-2	48° 21.868' N	115° 54.807' W			
Drop Point	DP-20	48° 23.471' N	115° 57.466' W			
Drop Point	DP-20	48° 20.214' N	115° 57.827' W			
Drop Point	DP-21	48° 20.128' N	115° 58.738' W			
Drop Point	DP-30	48° 19.829' N	116° 00.127' W			
Drop Point	DP-33	48° 18.637' N	116° 01.214' W			
Drop Point	DP-4	48° 21.124' N	115° 53.430' W			
Drop Point	DP-40	48° 23.899' N	115° 54.564' W			
Drop Point	DP-45	48° 23.206' N	115° 54.827' W			
Drop Point	DP-5	48° 21.744' N	115° 55.879' W			
Drop Point	DP-6	48° 20.368' N	115° 54.760' W			
Drop Point	DP-6	48° 21.864' N	115° 56.867' W			
Drop Point	DP-7	48° 22.211' N	115° 56.978' W			
Drop Point	DP-8	48° 21.077' N	115° 56.987' W			
Drop Point	DP-9	48° 21.610' N	115° 58.899' W			
Gate		48° 22.767' N	115° 52.331' W			
Hazard		48° 24.736' N	115° 55.827' W			
Hazard	Shay Patch	48° 22.707' N	115° 55.827' W			
Hazard	UTV Only	48° 21.874' N	115° 58.007' W			
Hazard	UTV Only	48° 21.404' N	115° 54.731' W			
Hazard	UTV Only	48° 21.112' N	115° 53.993' W			
Hazard	UTV Only	48° 21.864' N	115° 54.807' W			
Hazard	UTV Only	48° 21.620' N	115° 54.762' W			
Hazard	UTV Only	48° 23.014' N	115° 53.803' W			
Helibase	Levy Helibase	48° 17.699' N	115° 59.827' W			
Helipoint	H-1	48° 22.156' N	115° 56.913' W			
Helipoint	H-2	48° 21.877' N	115° 54.411' W			
Incident Command Post	Burnt Peak and South Fork ICP	48° 25.619' N	115° 49.216' W			
Lookout	Can Draw Lookout	48° 22.836' N	115° 56.738' W			
Lookout	Keeler Mtn Lookout	48° 22.276' N	115° 53.827' W			
Mobile Weather Unit	DRAWS-9	48° 19.230' N	115° 53.877' W			
Other		48° 24.793' N	115° 53.222' W			
Repeater	A/C Link	48° 24.793' N	115° 53.222' W			
Repeater	CHD 7	48° 19.189' N	115° 53.879' W			
Repeater	CHD 8	48° 19.189' N	115° 53.879' W			
Staging Area	Keeler Staging	48° 25.130' N	115° 53.111' W			
Water Source		48° 20.975' N	115° 53.840' W			
Water Source		48° 20.643' N	115° 54.151' W			
Water Source		48° 21.968' N	115° 58.354' W			
Water Source		48° 20.866' N	115° 54.651' W			
Water Source		48° 19.809' N	116° 00.707' W			
Water Source		48° 19.117' N	115° 52.402' W			