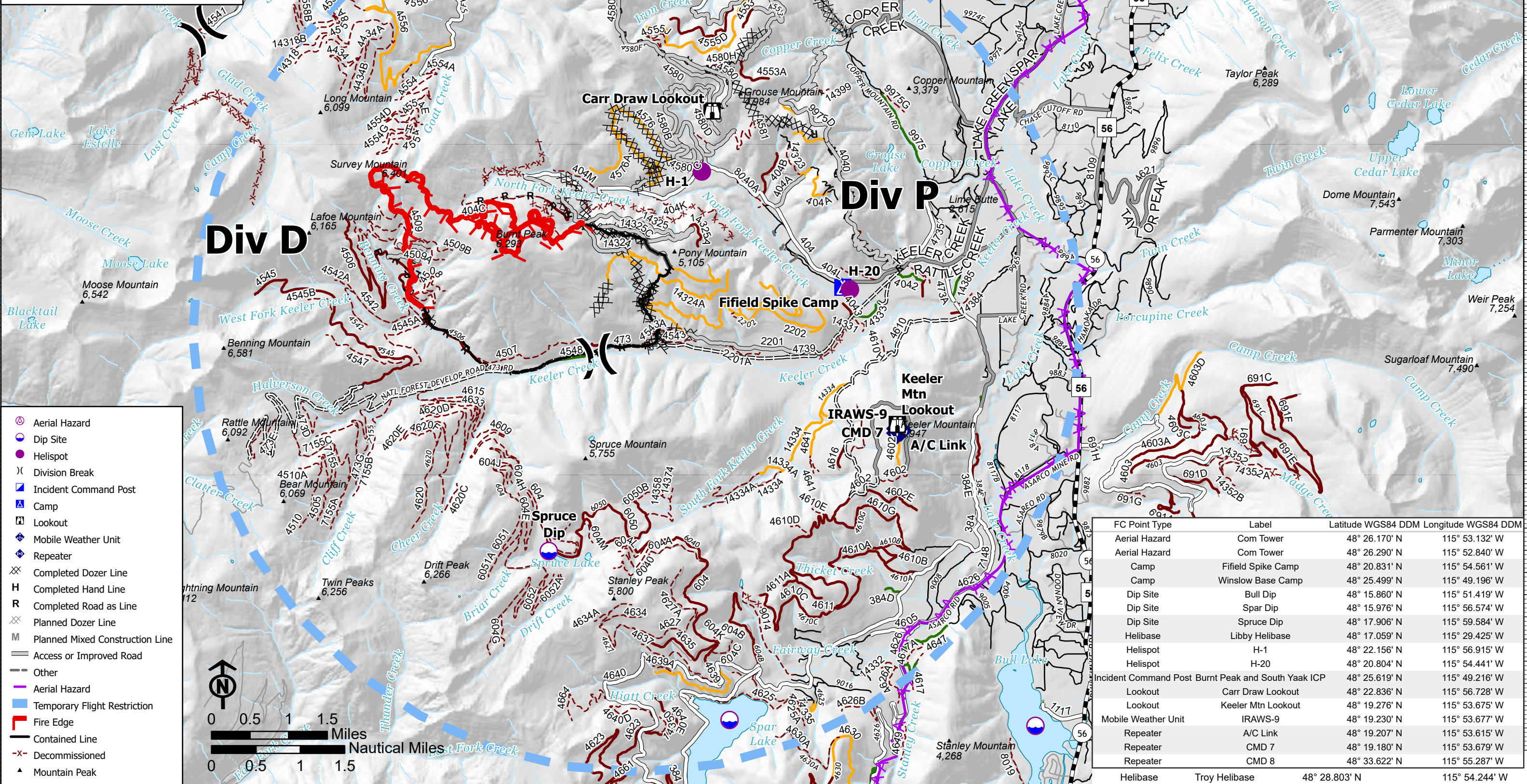


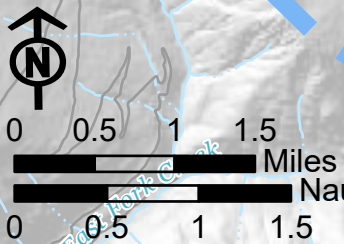
Air Ops
Burnt Peak
MT-KNF-000167
8/05/2021

3,384 acres at 8/01/2021 2131 hrs





- Aerial Hazard
- Dip Site
- Helispot
- Division Break
- Incident Command Post
- Camp
- Lookout
- Mobile Weather Unit
- Repeater
- Completed Dozer Line
- Completed Hand Line
- Completed Road as Line
- Planned Dozer Line
- Planned Mixed Construction Line
- Access or Improved Road
- Other
- Aerial Hazard
- Temporary Flight Restriction
- Fire Edge
- Contained Line
- Decommissioned
- Mountain Peak



| FC Point Type | Label | Latitude WGS84 DDM | Longitude WGS84 DDM |
|-----------------------|-------------------------------|--------------------|---------------------|
| Aerial Hazard | Com Tower | 48° 26.170' N | 115° 53.132' W |
| Aerial Hazard | Com Tower | 48° 26.290' N | 115° 52.840' W |
| Camp | Fiffeld Spike Camp | 48° 20.831' N | 115° 54.561' W |
| Camp | Winslow Base Camp | 48° 25.499' N | 115° 49.196' W |
| Dip Site | Bull Dip | 48° 15.860' N | 115° 51.419' W |
| Dip Site | Spar Dip | 48° 15.976' N | 115° 56.574' W |
| Dip Site | Spruce Dip | 48° 17.906' N | 115° 59.584' W |
| Helibase | Libby Helibase | 48° 17.059' N | 115° 29.425' W |
| Helispot | H-1 | 48° 22.156' N | 115° 56.915' W |
| Helispot | H-20 | 48° 20.804' N | 115° 54.441' W |
| Incident Command Post | Burnt Peak and South Yaak ICP | 48° 25.619' N | 115° 49.196' W |
| Lookout | Carr Draw Lookout | 48° 22.836' N | 115° 56.728' W |
| Lookout | Keeler Mtn Lookout | 48° 19.276' N | 115° 53.675' W |
| Mobile Weather Unit | IRAWS-9 | 48° 19.230' N | 115° 53.677' W |
| Repeater | A/C Link | 48° 19.207' N | 115° 53.615' W |
| Repeater | CMD 7 | 48° 19.180' N | 115° 53.679' W |
| Repeater | CMD 8 | 48° 33.622' N | 115° 55.287' W |
| Helibase | Troy Helibase | 48° 28.803' N | 115° 54.244' W |