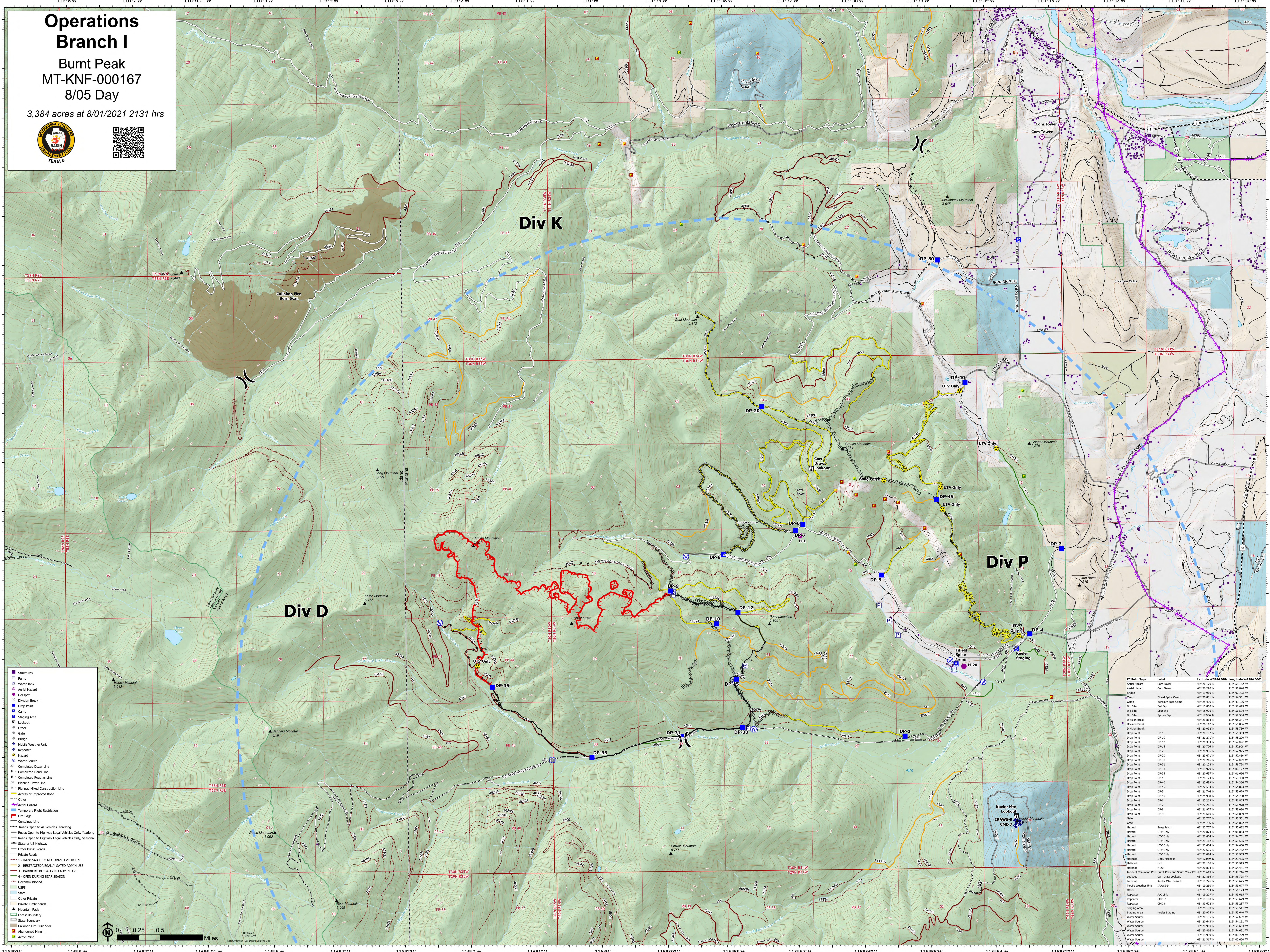


Operations Branch I

Burnt Peak
MT-KNF-000167
8/05 Day

3,384 acres at 8/01/2021 2131 hrs



- Structures
- Pump
- Water Tank
- Aerial Hazard
- Helipoint
- Division Break
- Drop Point
- Camp
- Staging Area
- Lookout
- Other
- Gate
- Bridge
- Mobile Weather Unit
- Repeater
- Hazard
- Water Source
- Completed Dozer Line
- Completed Hand Line
- Completed Road as Line
- Planned Road Construction Line
- Access or Improved Road
- Other
- Aerial Hazard
- Temporary Flight Restriction
- Fire Edge
- Contained Line
- Roads Open to All Vehicles, Yearling
- Roads Open to Highway Legal Vehicles Only, Yearling
- Roads Open to Highway Legal Vehicles Only, Seasonal
- State or US Highway
- Other Public Roads
- Private Roads
- 1 - INACCESSIBLE TO MOTORIZED VEHICLES
- 2 - RESTRICTED/LEGALLY GATED ADMIN USE
- 3 - BARRIERED/LEGALLY NO ADMIN USE
- 4 - OPEN DURING BEAR SEASON
- Decommissioned
- USFS
- State
- Other Private
- Private Timberlands
- Mountain Peak
- Forest Boundary
- State Boundary
- Callahan Fire Burn Scar
- Abandoned Mine
- Active Mine

FC Point Type	Label	Latitude	Longitude
Com Tower	Com Tower	48°26.170' N	115°53.132' W
Com Tower	Com Tower	48°26.290' N	115°52.840' W
Com Tower	Com Tower	48°26.810' N	115°50.002' W
Field Spike Camp	Field Spike Camp	48°26.833' N	115°54.561' W
Wilderness Base Camp	Wilderness Base Camp	48°25.499' N	115°49.190' W
Ball Dip	Ball Dip	48°25.860' N	115°51.517' W
Spot Dip	Spot Dip	48°15.970' N	115°56.574' W
Spur Dip	Spur Dip	48°17.960' N	115°55.941' W
Spur Dip	Spur Dip	48°23.814' N	115°55.341' W
Division Break	Division Break	48°26.112' N	115°55.000' W
Division Break	Division Break	48°26.892' N	115°56.700' W
Drop Point	DP-1	48°26.102' N	115°55.933' W
Drop Point	DP-10	48°21.273' N	115°58.807' W
Drop Point	DP-12	48°21.348' N	115°57.872' W
Drop Point	DP-15	48°20.706' N	115°57.908' W
Drop Point	DP-2	48°21.965' N	115°52.837' W
Drop Point	DP-20	48°23.473' N	115°57.466' W
Drop Point	DP-30	48°20.214' N	115°57.827' W
Drop Point	DP-31	48°20.128' N	115°58.700' W
Drop Point	DP-33	48°19.829' N	115°58.127' W
Drop Point	DP-35	48°20.637' N	115°58.100' W
Drop Point	DP-4	48°21.124' N	115°53.430' W
Drop Point	DP-46	48°23.889' N	115°54.564' W
Drop Point	DP-45	48°23.506' N	115°54.827' W
Drop Point	DP-5	48°21.744' N	115°55.679' W
Drop Point	DP-6	48°24.938' N	115°54.702' W
Drop Point	DP-6	48°23.809' N	115°56.867' W
Drop Point	DP-7	48°22.213' N	115°56.978' W
Drop Point	DP-8	48°21.917' N	115°58.900' W
Drop Point	DP-9	48°21.610' N	115°58.899' W
Gate	Gate	48°22.767' N	115°52.337' W
Gate	Gate	48°24.776' N	115°58.827' W
Gate	Gate	48°22.707' N	115°55.822' W
Hazard	UTV Only	48°21.273' N	115°58.807' W
Hazard	UTV Only	48°21.404' N	115°54.731' W
Hazard	UTV Only	48°21.112' N	115°53.993' W
Hazard	UTV Only	48°21.864' N	115°54.907' W
Hazard	UTV Only	48°22.620' N	115°54.762' W
Hazard	UTV Only	48°23.014' N	115°53.903' W
Hazard	UTV Only	48°22.959' N	115°54.927' W
Hazard	UTV Only	48°22.150' N	115°56.913' W
Hazard	UTV Only	48°21.610' N	115°58.899' W
Incident Command Post	Incident Command Post Burnt Peak and South Yank ICP	48°25.619' N	115°49.216' W
Lookout	Car Draw Lookout	48°22.836' N	115°56.728' W
Lookout	Keeler Mtn Lookout	48°23.276' N	115°53.877' W
Lookout	Keeler Mtn Lookout	48°19.230' N	115°53.677' W
Mobile Weather Unit	DRWS-9	48°24.793' N	115°53.822' W
Repeater	A/C Link	48°24.793' N	115°53.822' W
Repeater	CHD 7	48°19.180' N	115°53.679' W
Repeater	CHD 8	48°21.610' N	115°58.899' W
Staging Area	Keeler Staging	48°25.130' N	115°53.111' W
Staging Area	Keeler Staging	48°20.975' N	115°53.847' W
Water Source	Water Source	48°21.960' N	115°56.810' W
Water Source	Water Source	48°20.643' N	115°54.551' W
Water Source	Water Source	48°21.960' N	115°56.810' W
Water Source	Water Source	48°20.866' N	115°54.651' W
Water Source	Water Source	48°19.909' N	115°50.720' W
Water Source	Water Source	48°21.117' N	115°52.837' W

