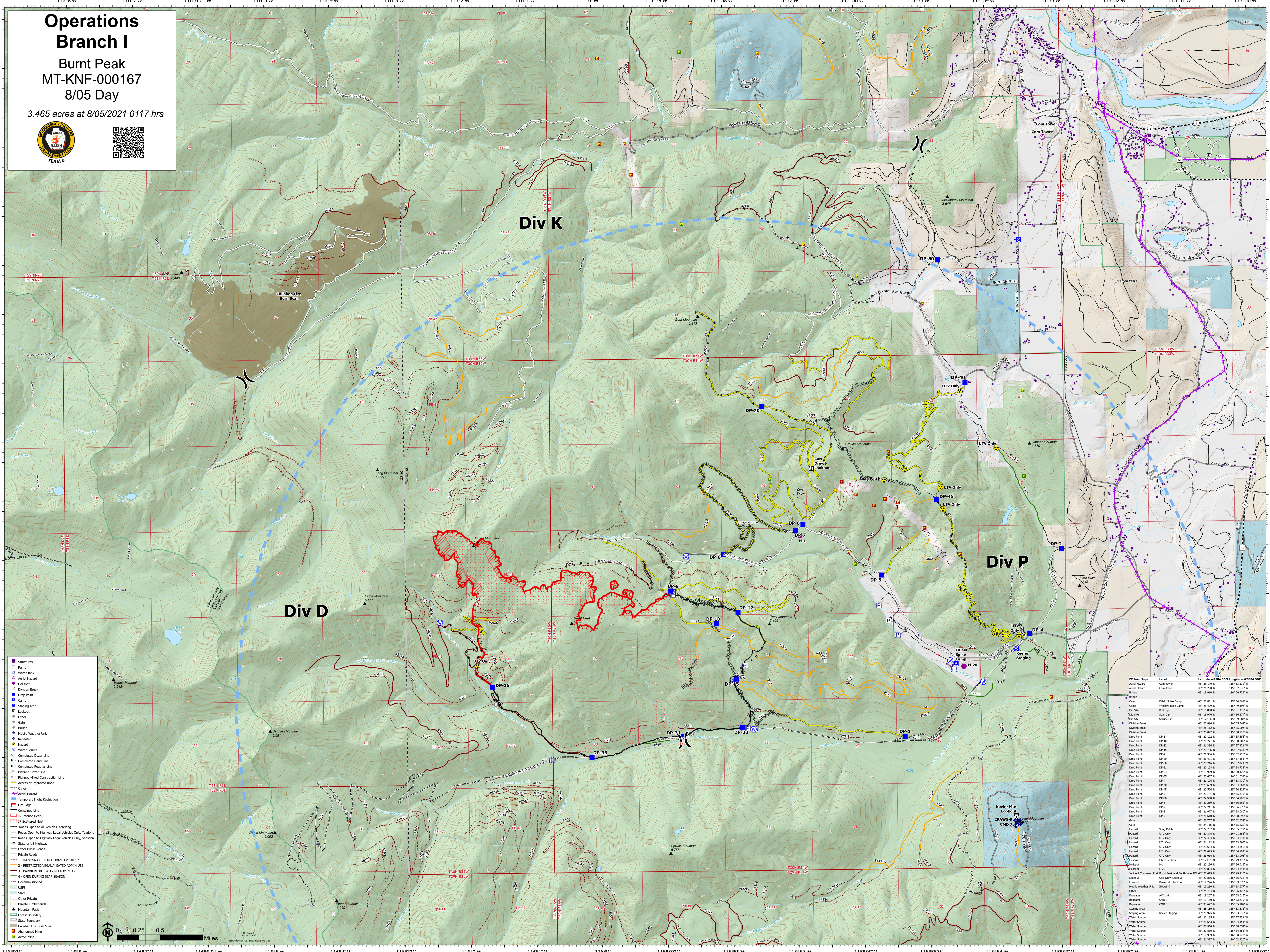


Operations Branch I

Burnt Peak
MT-KNF-000167
8/05 Day

3,465 acres at 8/05/2021 0117 hrs



- Structures
- Pump
- Water Tank
- Aerial Hazard
- Helipad
- Division Break
- Drop Point
- Camp
- Staging Area
- Lookout
- Other
- Gate
- Bridge
- Mobile Weather Unit
- Repeater
- Hazard
- Water Source
- Completed Dozer Line
- Completed Road as Line
- Planned Dozer Line
- Planned Mowed Construction Line
- Access or Improved Road
- Other
- Aerial Hazard
- Temporary Flight Restriction
- Fire Edge
- Controlled Line
- IR Intense Heat
- IR Scattered Heat
- Roads Open to All Vehicles, Yearling
- Roads Open to Highway Legal Vehicles Only, Yearling
- Roads Open to Highway Legal Vehicles Only, Seasonal
- State or US Highway
- Other Public Roads
- Private Roads
- 1 - INACCESSIBLE TO MOTORIZED VEHICLES
- 2 - RESTRICTED/LEGALLY GATED ADMIN USE
- 3 - BARRIERED/LEGALLY NO ADMIN USE
- 4 - OPEN DURING BEAR SEASON
- Decommissioned
- USFS
- State
- Other Private
- Private Timberlands
- Mountain Peak
- Forest Boundary
- State Boundary
- Callahan Fire Burn Scar
- Abandoned Mine
- Active Mine

FC Point Type	Label	UTM Easting	UTM Northing
Aerial Hazard	Com Tower	48° 26.170' N	115° 52.840' W
Aerial Hazard	Com Tower	48° 26.200' N	115° 52.840' W
Bridge	Keeler Creek Bridge	48° 18.800' N	115° 55.000' W
Camp	Field Ops Camp	48° 20.800' N	115° 54.561' W
Camp	Winlow Base Camp	48° 25.400' N	115° 48.190' W
Drop Site	Ball Dip	48° 15.800' N	115° 52.410' W
Drop Site	Snake Dip	48° 15.000' N	115° 56.210' W
Drop Site	Service Dip	48° 17.000' N	115° 59.580' W
Division Break	DP-1	48° 22.800' N	115° 55.241' W
Division Break	DP-2	48° 21.800' N	115° 55.000' W
Division Break	DP-3	48° 20.900' N	115° 58.730' W
Drop Point	DP-10	48° 21.271' N	115° 58.200' W
Drop Point	DP-12	48° 21.380' N	115° 57.920' W
Drop Point	DP-15	48° 20.100' N	115° 52.920' W
Drop Point	DP-20	48° 21.471' N	115° 57.640' W
Drop Point	DP-30	48° 20.220' N	115° 57.820' W
Drop Point	DP-31	48° 20.120' N	115° 58.720' W
Drop Point	DP-35	48° 19.800' N	115° 60.117' W
Drop Point	DP-36	48° 20.657' N	115° 61.434' W
Drop Point	DP-40	48° 21.228' N	115° 53.400' W
Drop Point	DP-45	48° 22.000' N	115° 54.823' W
Drop Point	DP-50	48° 21.700' N	115° 54.700' W
Drop Point	DP-6	48° 22.200' N	115° 58.800' W
Drop Point	DP-7	48° 22.211' N	115° 56.970' W
Drop Point	DP-8	48° 21.977' N	115° 58.000' W
Drop Point	DP-9	48° 21.620' N	115° 58.800' W
Gate	Gate	48° 22.707' N	115° 52.531' W
Hazard	Snag Patch	48° 22.700' N	115° 52.827' W
Hazard	UTV Only	48° 20.800' N	115° 61.833' W
Hazard	UTV Only	48° 21.100' N	115° 54.710' W
Hazard	UTV Only	48° 21.127' N	115° 53.990' W
Hazard	UTV Only	48° 22.600' N	115° 54.400' W
Hazard	UTV Only	48° 22.600' N	115° 54.800' W
Hazard	UTV Only	48° 23.054' N	115° 53.900' W
Hazard	UTV Only	48° 23.054' N	115° 53.900' W
Helipad	H-1	48° 21.150' N	115° 56.915' W
Helipad	H-2	48° 20.800' N	115° 54.441' W
Lookout	Car Draw Lookout	48° 22.830' N	115° 56.720' W
Lookout	Keeler Mtn Lookout	48° 22.270' N	115° 53.970' W
Mobile Weather Unit	IRAWS-9	48° 19.230' N	115° 53.877' W
Other	AC Link	48° 24.700' N	115° 56.223' W
Repeater	CHD 7	48° 19.180' N	115° 53.670' W
Repeater	CHD 8	48° 20.820' N	115° 53.800' W
Staging Area	Keeler Staging	48° 25.130' N	115° 53.511' W
Water Source	Keeler	48° 20.970' N	115° 53.640' W
Water Source	Keeler	48° 20.100' N	115° 52.930' W
Water Source	Keeler	48° 20.642' N	115° 54.511' W
Water Source	Keeler	48° 21.900' N	115° 54.850' W
Water Source	Keeler	48° 19.800' N	115° 54.610' W
Water Source	Keeler	48° 19.800' N	115° 60.720' W
Water Source	Keeler	48° 21.310' N	115° 60.100' W

